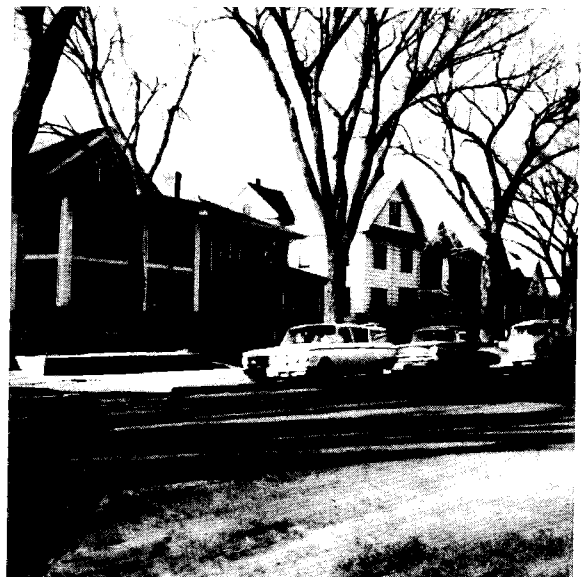
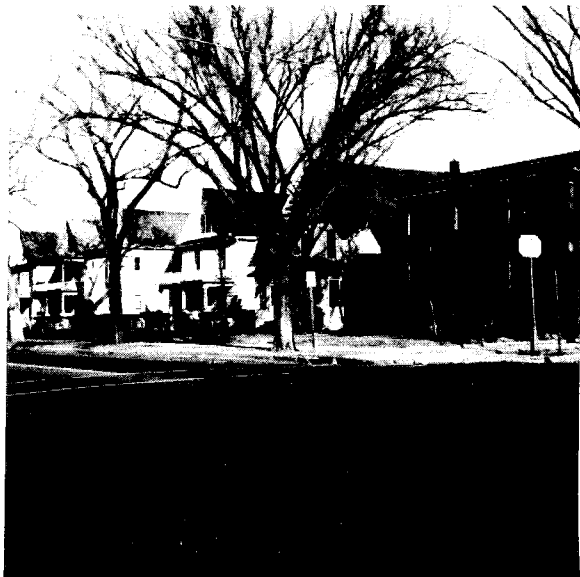
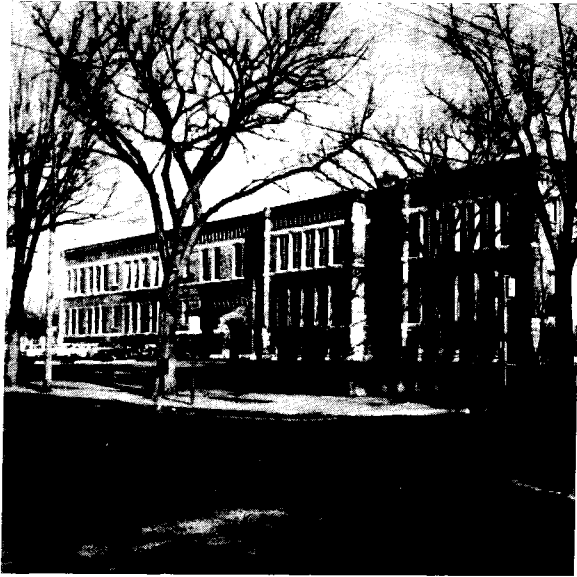


SEWARD ELEMENTARY SCHOOL



SEWARD ELEMENTARY SCHOOL

The William H. Seward Elementary School, which also contains grades 7 and 8, is a two-story masonry and wood structure. It was erected in 1887 and additions were constructed in 1901, 1910, and 1916. Two stair towers were added to the building in 1960. It has a basement. The building is located on a 4.12 acre site at 2315 28th Avenue South. The Park Board is securing property near the school site in order to develop a school-park complex.

Heavily traveled thoroughfares in the Seward Elementary School attendance area are Franklin, 27th, and 31st Avenues, River Road West, and 25th Street. The southern and eastern boundaries are formed by railroad tracks and the Mississippi River. Interstate Freeway (I94) construction has already affected Seward's enrollment due to land purchase and dwelling removal. The proposed 28th Street Crosstown Route may have a similar effect on enrollment when construction begins. A reduction in enrollment may also be affected by implementation of the Seward Neighborhood Renewal Program which includes land for multiple dwelling purposes. Resultant enrollment increases due to land development are dependent upon zoning and apartment type.

In general, the residential area east of 31st Avenue consists of single family dwellings, while the remaining area consists of multiple family dwellings.

The Seward School building also serves as a 7th and 8th grade facility for students from the Monroe, Seward, and Longfellow Elementary districts. For additional information concerning land use and traffic arteries within Seward's 7th and 8th grade attendance area, refer to the Longfellow and Monroe Elementary School descriptions.

As may be noted on Plate 86, the Seward School building contains the following basic spaces:

- 12 Classrooms
 - 2 Kindergartens
 - 1 Special Use Room (regular classroom)
 - 1 Administrative Office Suite (general office, health services for K-8)
 - 1 Multi-Purpose Room (gymnasium)
 - 1 Teachers' Lounge
- - - - -

Inadequate Spaces

- 1 Regular classroom is more than 30 inches below grade.
- 1 Elementary library is more than 30 inches below grade.

BASIC SPACES OF THE SEWARD JUNIOR HIGH SCHOOL

Ground Floor

Choral and Band Room
Instructional Materials Center (library)
Electric Shop
Metal Shop
Mechanical Drawing Room
Foods Laboratory
Clothing Laboratory
Teachers' Lounge
Teachers' Lunchroom
Students Lunchroom
Wood Shop

First Floor

Gymnasium

Second Floor

8 Regular Classrooms
1 Music Room
1 Special Education Room
1 Art Room
1 General Science Room
Teachers' Lounge

CAPACITY OF THE SEWARD JUNIOR HIGH SCHOOL

The Seward Junior High School has an optimum capacity of 422 pupils and a rated capacity of 524 pupils. The gross capacity of each teaching space in the junior high school is listed in Table 20. To insure desirable and needed flexibility in programming, the gross capacities have been multiplied by 85 per cent to obtain the optimum and rated capacity figures.

UTILIZATION OF THE SEWARD JUNIOR HIGH SCHOOL

In September, 1962, the Seward Junior High School accommodated 264 students in classes divided as follows:

<u>Grade</u>	<u>Number</u>
7	143
8	121
Sub Total	<u>264</u>
Special Class	9
Total	<u>273</u>

The total enrollment of 273 at the Seward Junior High School is 251 less than the buildings' rated capacity, and this enrollment is less than its optimum capacity by 149 students.

CAPACITY OF THE SEWARD ELEMENTARY SCHOOL

If 25 pupils are allotted to each of the 12 basic classrooms, and 20 pupils to each half-day session of the two kindergarten rooms, this building would have an optimum capacity of 380 pupils. An increase of five pupils in each class group and each kindergarten session would give the Seward Elementary School a rated capacity of 460 pupils. This building has 30 substandard pupil spaces.

UTILIZATION OF THE SEWARD ELEMENTARY SCHOOL

At the end of the fourth week of school in September, 1962, this school had the following grade distribution:

<u>Grade</u>	<u>Number</u>
K	96
1	83
2	82
3	75
4	74
5	76
6	<u>67</u>
TOTAL	553

The total enrollment of 553 at the Seward Elementary School is 93 more than the rated capacity and this enrollment exceeds the optimum capacity by 173 pupils. The pupil-teacher ratio at the Seward Elementary School in grades 1-6 in September, 1962, was 32.6 to 1.

TABLE 20

COMPUTATION OF CAPACITY
SEWARD JUNIOR HIGH SCHOOL

<u>Spaces</u>	<u>Optimum</u>	<u>Rated</u>	<u>Optimum</u>	<u>Rated</u>
8 Classrooms (regular)	25	30	200	240
1 General Science Room	25	30	25	30
1 Art Room	24	28	24	28
1 Wood Working Shop	24	28	24	28
1 Drafting Room	25	30	25	30
1 Electric Shop	20	24	20	24
1 Metal Shop	24	28	24	28
1 Music Room	30	40	30	40
1 Band and Choral Room	40	60	40	60
1 Special Education Room	10	15	10	15
1 Foods Laboratory	20	24	20	24
1 Clothing Laboratory	20	24	20	24
1 Gymnasium	35	45	35	45
	Total Gross Capacity		497	616
		85%	422	524

SCHOOL BUILDING FACT SHEET

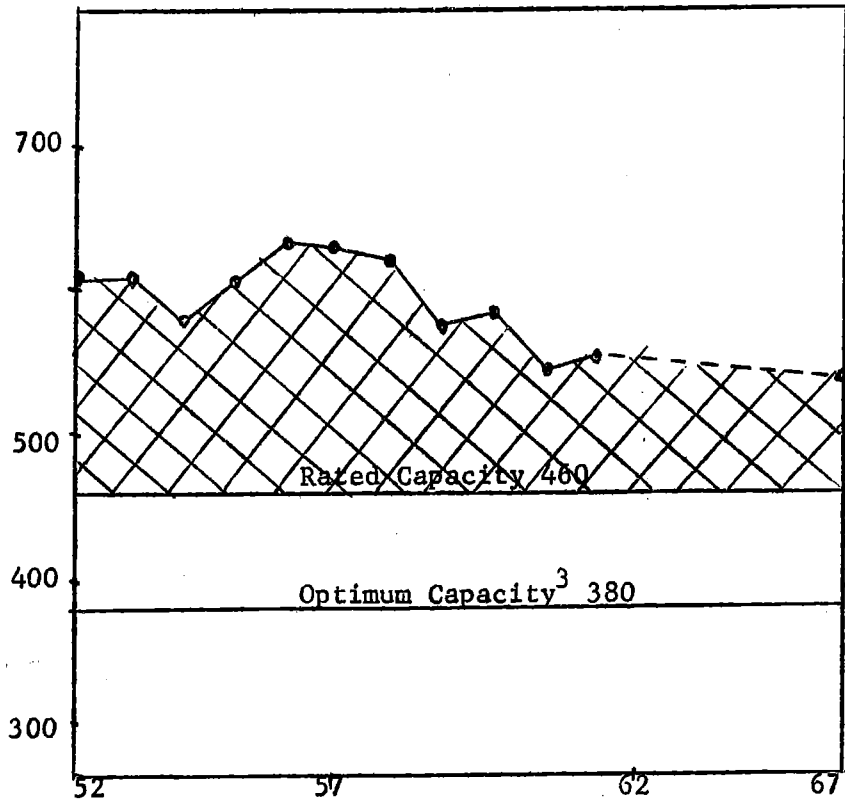
Donald J. Leu & John J. McNicholas, Jr.
 Educational Facilities Study
 Michigan State University

SCHOOL Seward Elementary ADDRESS 2315 28th Avenue South
 GRADES K-6 BUILT 1887 ADDITIONS 1901, 1910, 1916
 STRUCTURE Masonry and wood STORIES 2 & B
 SITE AREA 4.12 acres PLAYGROUNDS _____
 NUMBER OF CLASSROOMS 12 OTHER SPACES: Special Use Room,
 NUMBER OF KINDERGARTENS 2 Administrative Suite, Gymnasium,
 NUMBER OF SPECIAL EDUCATION ROOMS 0 Elementary Playroom
 RATED CAPACITY¹ 460 SEPTEMBER, 1962 ENROLLMENT 562

ENROLLMENT

ENROLLMENT TREND

Year	Sept.
1952	605
1953	608
1954	585
1955	607
1956	634
1957	633
1958	621
1959	575
1960	587
1961	549
1962	562
1967 ²	537



¹ Formula: 30 per classroom, 50 per kindergarten, 15 per special education room
² Estimate based upon data obtained from the Minneapolis Public Schools' Office of Research, Census and Attendance
³ Formula: 25 per classroom, 40 per kindergarten, 10 per special education room

SCHOOL BUILDING FACT SHEET

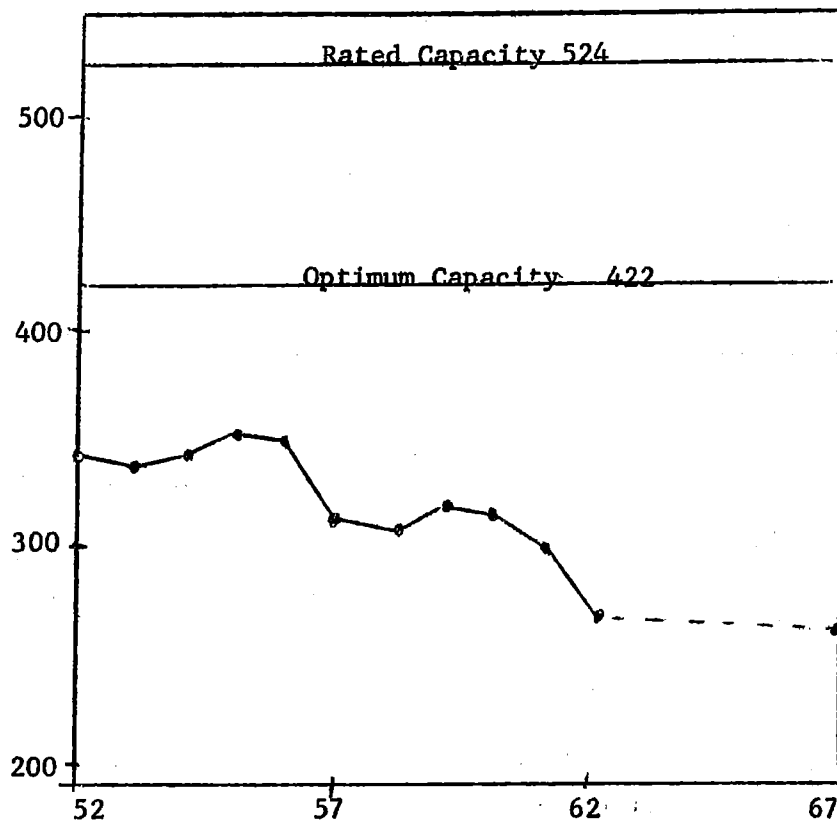
Donald J. Leu & John J. McNicholas, Jr.
Educational Facilities Study
Michigan State University

SCHOOL Seward Junior High ADDRESS 2315 28th Avenue South
 GRADES 7-8 BUILT 1887 ADDITIONS 1901, 1910, 1916
 STRUCTURE Masonry and wood STORIES 2 & B
 SITE AREA 4.12 Acres PLAYGROUND AREA _____
 NUMBER OF CLASSROOMS 8 OTHER SPACES: Usual Secondary
 NUMBER OF KINDERGARTENS 0 Educational Facilities except for
 NUMBER OF SPECIAL EDUCATION ROOMS 1 auditorium
 RATED CAPACITY¹ 524 SEPTEMBER, 1962 ENROLLMENT 264

ENROLLMENT

Year	Sept.
1952	338
1953	333
1954	337
1955	350
1956	346
1957	308
1958	301
1959	311
1960	311
1961	299
1962	264
1967 ²	260

ENROLLMENT TREND



¹Formula: 30 per classroom, 50 per kindergarten, 15 per special education room
²Estimate based upon data obtained from the Minneapolis Public Schools' Office of Research, Census and Attendance

NEEDED IMPROVEMENTS

1. Rehabilitation and/or modernization:
 - Classrooms, including additional floor area, sinks, storage, cabinets, counters, furnishings, and display areas.
 - Science rooms
 - Industrial Arts
 - Art
 - Home Economics
 - Physical Education
 - Instructional Materials Center (library): relocate and provide adequate floor space for shelving, work room, storage, provide display area, sink and modern furnishings
 - Communication System
 - Administrative Suite, to include adequate space for general office and storage
 - Teachers' Lounge
 - Toilet Facilities
 - Heating and Ventilation
2. Acoustical Treatment
3. Interior and exterior painting; plaster patching; sandblasting
4. Site: playground and landscaping; retaining wall repair;
5. Window repairs
6. Gymnasium and classroom lighting; stage switchboard
7. Janitorial Service: provide adequate office space, including shower and toilet; additional storage
8. Corridor and classroom floors
9. Gymnasium-auditorium

SUMMARY

The Seward School building, a K-8 facility, was erected in 1887, and additions were constructed in 1901, 1910, and 1916. If this building is to be retained as an elementary facility over a long period of time by the Minneapolis Public School system, it needs major modernization and rehabilitation to meet present day standards of health, safety and educational adequacy.

In addition to the many areas needing modernization and rehabilitation, the building should be acoustically tiled and painted. Window repairs are needed, as are improved classroom and corridor floors. An adequate engineer's office is needed, including toilet and shower facilities and additional storage.

The present site needs improved play areas and landscaping. The Park Board is acquiring property near the Seward school in order to develop a school-park complex.

Factors to be considered in the continued use of this building as a K-8 facility are: 1) age of structure; and 2) the extensive rehabilitation needs.