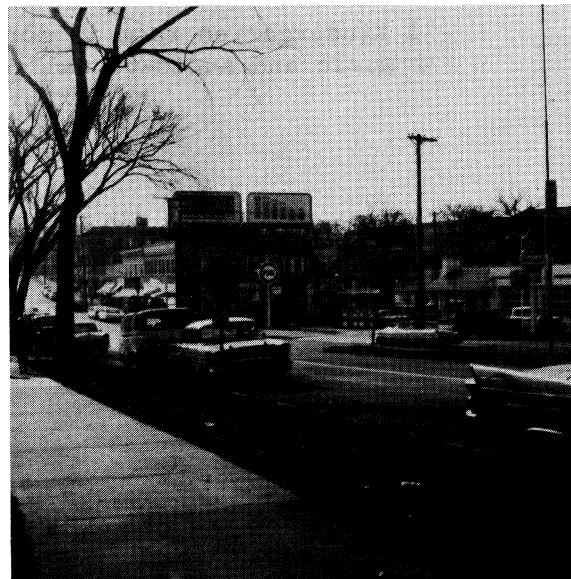
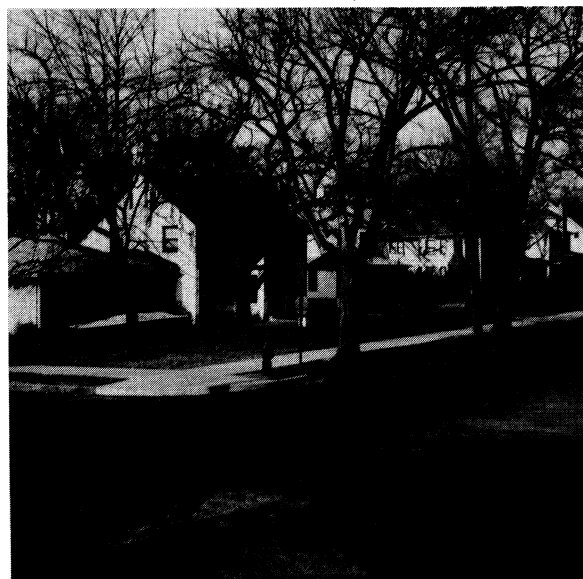
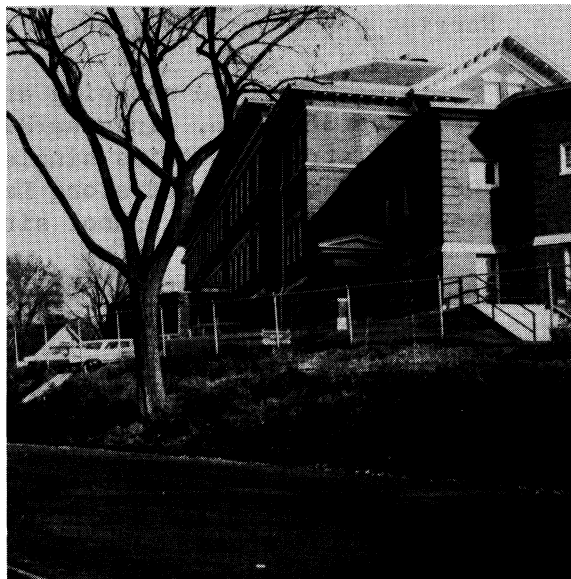


LAKE HARRIET ELEMENTARY SCHOOL



LAKE HARRIET ELEMENTARY SCHOOL

The Lake Harriet Elementary School, a two-story masonry and wood structure, was erected in 1906. Additions were constructed in 1908 and 1911. It has a basement. The building is located on a 1.58 acre site at 4236 Sheridan Avenue South.

Heavily traveled thoroughfares within the Lake Harriet attendance area are Calhoun Boulevard, Richfield Road, Xerxes and Sheridan Avenues South, and West 44th Street. Lake Calhoun, Lakewood Cemetary, and Lake Harriet serve as the district's north, east and southeastern boundaries.

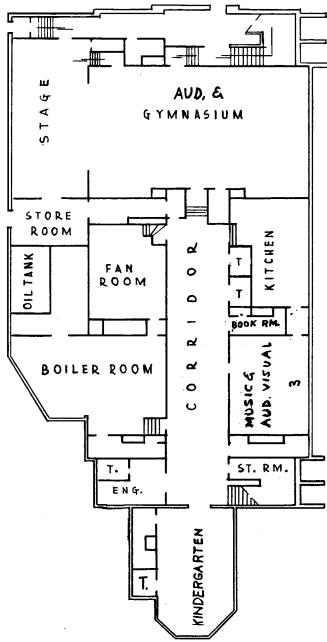
A neighborhood shopping area is located at West 43rd Street and Upton Avenue South. In general, the residential neighborhood in the school district contains single family dwellings, with some multiple dwelling units located along Lake Harriet and also along Sheridan Avenue, south of the school site.

The Lake Harriet School building contains the following basic spaces as may be noted on Plate III:

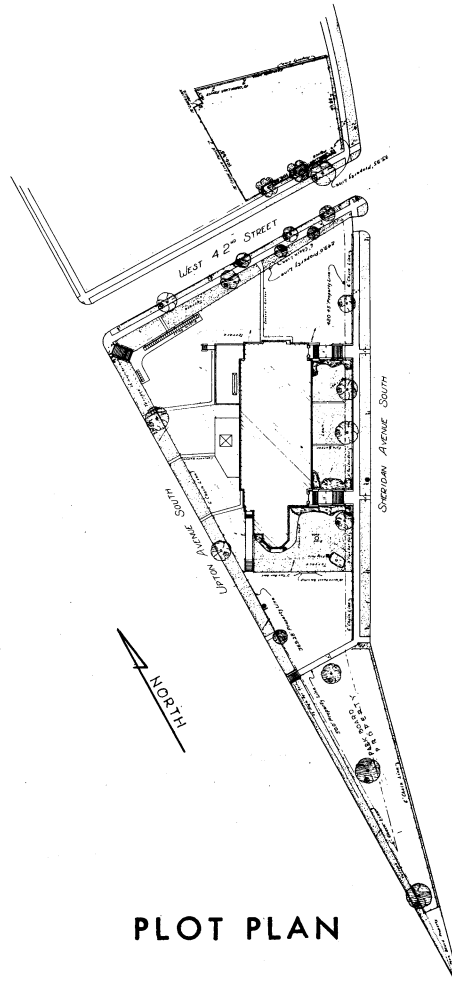
- 9 Classrooms
- 1 Kindergarten
- 1 Instructional Materials Center (library)
- 1 Special Use Room (regular classroom)
- 1 Administrative Suite (general office, health service)
- 1 Multi-Purpose Room (auditorium-gymnasium)
- 1 Teachers' Lounge

INADEQUATE SPACES

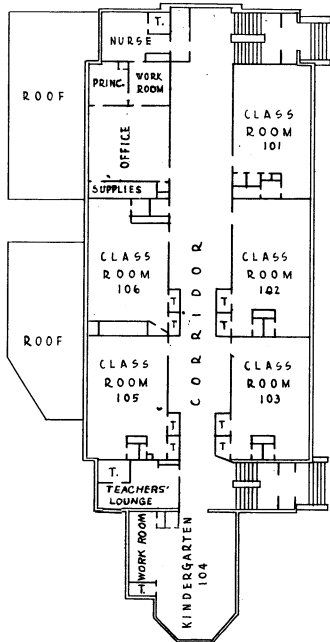
- 1 Kindergarten room is more than 30 inches below grade.
- 1 Music and audio-visual room is more than 30 inches below grade.



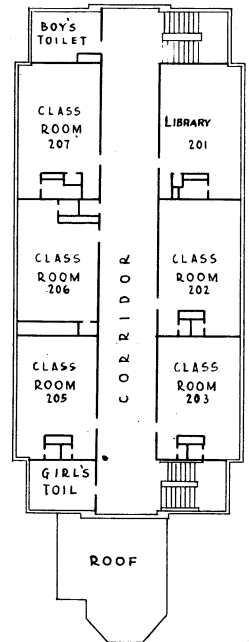
• GROUND FLOOR •



PLOT PLAN



• FIRST FLOOR •



• SECOND FLOOR •

CAPACITY OF THE LAKE HARRIET ELEMENTARY SCHOOL

This building has an optimum capacity of 265 pupils. This figure is obtained by allotting 40 pupils to each kinderten room (20 pupils in each room during each half-day session) and 25 pupils to each classroom. The rated capacity of this school is determined by increasing the number of pupils allotted to each classroom and kindergarten group by 5 pupils. The rated capacity of the Lake Harriet Elementary School is 320 pupils. This building has 50 substandard pupil spaces.

UTILIZATION OF THE LAKE HARRIET ELEMENTARY SCHOOL

At the end of the fourth week of school in September, 1962, this school had the following grade distributions:

<u>GRADE</u>	<u>NUMBER</u>
K	70
1	49
2	55
3	51
4	42
5	48
6	<u>64</u>
Total	379

The total enrollment of 379 at the Lake Harriet School is 59 more than the building's rated capacity, and this enrollment exceeds the optimum capacity by 114 pupils. The pupil-teacher ratio at the Lake Harriet School in grades 1-6 in September, 1962, was 30.9 to 1.

SCHOOL BUILDING FACT SHEET

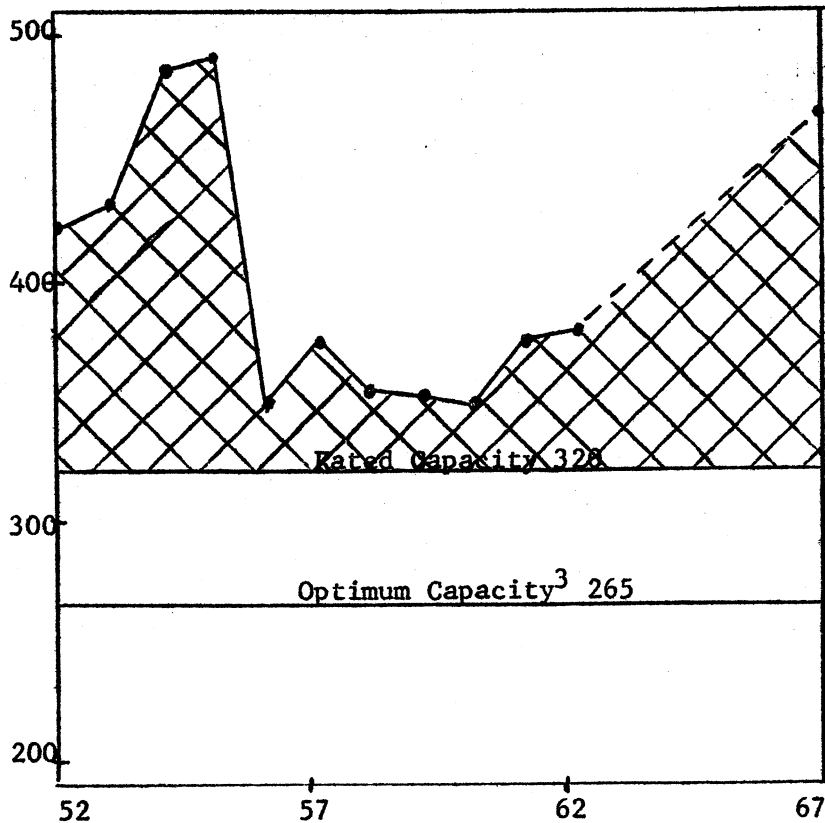
Donald J. Leu & John J. McNicholas, Jr.
 Educational Facilities Study
 Michigan State University

SCHOOL, Lake Harriet Elementary ADDRESS 4236 Sheridan Avenue South
 GRADES K-6 BUILT 1906 ADDITIONS 1908, 1911
 STRUCTURE Masonry and wood STORIES 2 & B
 SITE AREA 1.58 acres PLAYGROUND AREA _____
 NUMBER OF CLASSROOMS 9 OTHER SPACES: Instructional Materials
 NUMBER OF KINDERGARTENS 1 Center, Special Use Room, Administra-
 NUMBER OF SPECIAL EDUCATION ROOMS 0 tive Suite
 RATED CAPACITY¹ 320 SEPTEMBER, 1962 ENROLLMENT 379

ENROLLMENT

Year	Sept.
1952	422
1953	434
1954	483
1955	489
1956	348
1957	377
1958	354
1959	352
1960	349
1961	375
1962	379
1967 ²	468

ENROLLMENT TREND



¹ Formula: 30 per classroom, 50 per kindergarten, 15 per special education room
² Estimate based upon data obtained from the Minneapolis Public Schools' Office of Research, Census and Attendance
³ Formula: 25 per classroom, 40 per kindergarten, 10 per special education room

NEEDED IMPROVEMENTS

1. Modernization and/or Rehabilitation:
 - Instructional materials center, including additional floor area and work room
 - Administrative suite, including the addition of a guidance center and increased storage
 - Heating
2. Roof and Canopies
3. Window Repairs
4. Floor Repairs
5. Radio-TV Reception
6. Sandblasting
7. Site: size; playground and parking; drainage
8. Provide Elementary Playroom

SUMMARY

Lake Harriet Elementary School was erected in 1906, and additions were constructed in 1908 and 1911. If this building is to be retained as an elementary facility over a long period of time by the Minneapolis Public School system, it needs additional modernization and rehabilitation to meet present standards of safety and educational adequacy. The building also needs an improved roof, window repairs, and sandblasting. The floors should be repaired or replaced.

The 1.58 acre site is extremely small, and additional acreage is needed for adequate playground areas and off-street parking. The present site needs improved drainage and improved play areas. A part of the play area is separated from the major portion of the school site by 42nd Street.