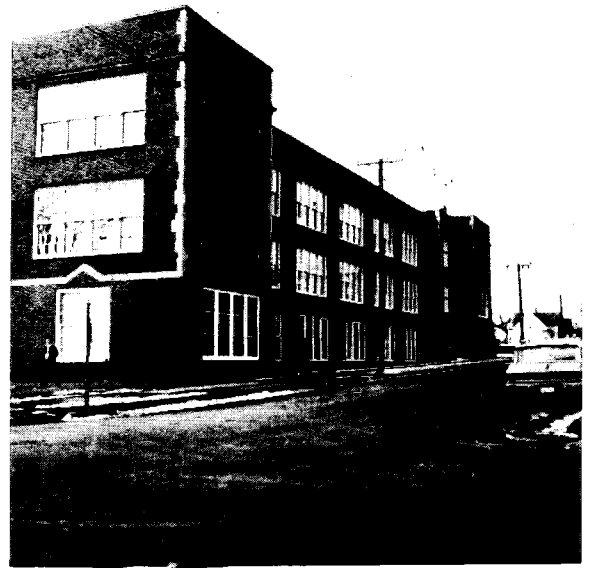


JORDAN JUNIOR HIGH SCHOOL



JORDAN JUNIOR HIGH SCHOOL

The Charles M. Jordan High School, erected in 1922 is a two-story masonry and wood structure. It has a basement. It is located on a 4.8 acre site at 2927 Irving Avenue North.

Within the school attendance area, Broadway, Penn, 26th, Lowry, Lyndale, and Washington Avenues North, and the one-way pair of Fremont and Emerson Avenues North, are heavily traveled traffic routes. Broadway and Lowry, which will interchange with the freeway (I 94), may expect heavier traffic volumes. Concomitantly, the traffic volumes on the main north-south arterials may decrease. Removal of housing in the path of the freeway (to be built along the eastern edge of Jordan's attendance area) may cause a slight reduction in Jordan's enrollment.

Part of Jordan's school attendance area lies north of Lowry Avenue in the Camden Community. The generalized land use within Jordan's attendance area is single family residential. Multiple family dwellings exist in the north-eastern portion of the district. Industry is located along the Mississippi River, and commercial strips exist along Broadway and Lowry Avenues. For additional information concerning the Jordan attendance area, refer to the following elementary school descriptions: Penn, McKinley, Cleveland, Bremer, Lowell, and Hawthorne.

The Jordan Junior High School building has the following basic spaces, as may be noted on Plates 16 and 17:

Ground Floor

- 1 Classroom (small)
- 3 Science Laboratories
- 2 Foods Laboratories
- 1 Music Room
- 1 Band and Orchestra Room
- 1 Audio Visual Room
- 1 Community Room
- 1 Student Lunchroom
- 1 Teacher's Lunchroom

First Floor

- 3 Classrooms (regular)
- 9 Classrooms (small)
- 3 Special Education rooms
- 1 Electrical Shop
- 1 Wood Shop
- 1 Metal Shop
- 1 Drafting Room
- 1 Graphic Arts Shop
- 1 Boys' Gymnasium
- 1 Girls' Gymnasium
- 1 Swimming Pool
- 1 Instructional Materials Center (library)
- 1 Public library office
- 1 Teachers' Work Room
- 1 Auditorium
- 1 Administrative Suite, including Counseling Office

Second Floor

- 2 Classrooms (regular)
- 12 Classrooms (small)
- 1 Science Laboratory
- 2 Clothing Laboratories
- 1 Typing Room
- 3 Art Rooms

CAPACITY OF THE JORDAN JUNIOR HIGH SCHOOL

The Jordan Junior High School has an optimum capacity of 964 pupils and a rated capacity of 1202 pupils. The gross capacity of each teaching space in the junior high school is listed in Table 5. To insure desirable and needed flexibility in programming, the gross capacities of the secondary schools have been multiplied by 85 per cent to obtain the optimum and rated capacity figures.

UTILIZATION OF THE JORDAN JUNIOR HIGH SCHOOL

In September 1962, the Jordan Junior High School accommodated 1252 students in classes divided as follows:

<u>Grade-</u>	<u>Number</u>
7	372
8	395
9	<u>452</u>
Subtotal	1219
Special Class	<u>33</u>
Total	1252

The total enrollment of 1252 at the Jordan School is 50 more than the building's rated capacity, but this enrollment exceeds the optimum capacity by 288 pupils.

TABLE 5
COMPUTATION OF CAPACITY
JORDAN JUNIOR HIGH SCHOOL

<u>Spaces</u>	<u>Optimum</u>	<u>Rated</u>	<u>Total Capacity</u>	
			<u>Optimum</u>	<u>Rated</u>
5 Classrooms (regular)	25	30	125	150
22 Classrooms (small)	20	25	440	550
3 Special Education Rooms	10	15	30	45
4 Science Laboratories	24	28	96	112
1 Electrical Shop	20	24	20	24
1 Wood Shop	24	28	24	28
1 Metal Shop	24	28	24	28
1 Graphic Arts Shop	18	22	18	22
1 Drafting Room	25	30	25	30
2 Foods Laboratories	20	24	40	48
2 Clothing Laboratories	20	24	40	48
1 Typing Room	30	35	30	35
3 Art Rooms	24	28	72	84
1 Band and Orchestra Room	40	60	40	60
1 Music Room	40	60	40	60
1 Boys' Gymnasium	35	45	35	45
1 Girls' Gymnasium	35	45	35	45
Total Gross Capacities			<u>1134</u>	<u>1414</u>
			85%	1202

SCHOOL BUILDING FACT SHEET

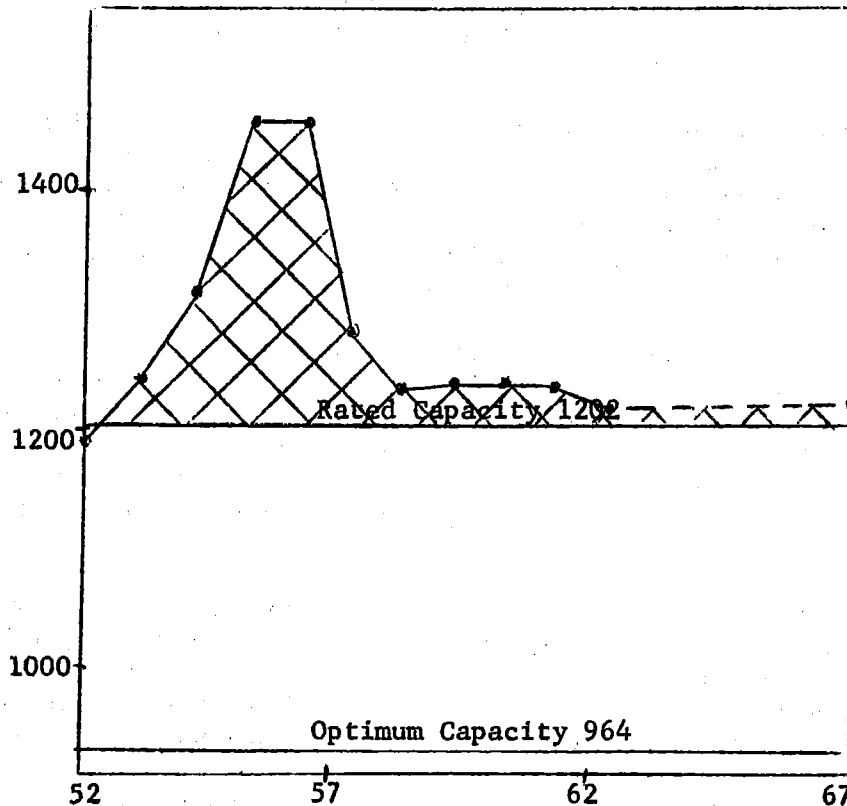
Donald J. Leu & John J. McNicholas, Jr.
 Educational Facilities Study
 Michigan State University

SCHOOL Jordan Jr. High ADDRESS 2927 Irving Avenue North
 GRADES 7-9 BUILT 1922 ADDITIONS _____
 STRUCTURE Masonry and wood STORIES 2 & B
 SITE AREA 4.8 acres PLAYGROUND AREA 2.2 acres
 NUMBER OF CLASSROOMS 27 OTHER SPACES: Usual Secondary
 NUMBER OF KINDERGARTENS 0 Educational Facilities
 NUMBER OF SPECIAL EDUCATION ROOMS 3
 RATED CAPACITY¹ 1202 SEPTEMBER, 1962 ENROLLMENT 1249

ENROLLMENT

ENROLLMENT TREND

Year	Sept.
1952	1198
1953	1225
1954	1320
1955	1428
1956	1428
1957	1294
1958	1267
1959	1268
1960	1268
1961	1268
1962	1249
1967 ²	1243



¹ Formula: 30 per classroom, 50 per kindergarten, 15 per special education room
² Estimate based upon data obtained from the Minneapolis Public Schools' Office of Research, Census and Attendance

NEEDED IMPROVEMENTS

1. Modernization and/or rehabilitation:
 - Classrooms
 - Instructional materials center (library)
 - Physical education
 - Industrial arts
 - Home economics
 - Administrative suite
 - Lunchroom
 - Plumbing facilities
 - Communication system
 - Heating, ventilation, and temperature control
 - Plaster patching, interior and exterior painting
2. Acoustical treatment
3. Window, cornice, retaining wall, sidewalk and curb repairs
4. Engineer's office, toilet and shower
5. Floors
6. Site: size, parking and play areas; landscaping.

SUMMARY

If the Jordan Junior High School, erected in 1922, is to be retained as a secondary educational facility for a long period of time by the Minneapolis Public School system, it should be modernized and rehabilitated in order to meet present day standards of health, safety, and educational adequacy.

Classroom rehabilitation, should include additional floor area, storage, adequate chalk and display boards, furniture, and equipment. The instructional materials center (library), presently operated in conjunction with the Public Library, needs rehabilitation to include additional floor space for shelving, furnishings, equipment, adequate storage, and work areas for teachers and librarians.

The present shower and locker room facilities are inadequate. Additional storage for physical education equipment and supplies is needed. Rehabilitation of the industrial arts area should include additional space, adequate furnishings, equipment, and storage. The home economics area needs rehabilitation, including modern equipment and furnishings, adequate storage, and window screens for sanitation purposes.

The administrative suite should be rehabilitated to provide adequate floor space, storage furnishing, and equipment for the general offices, the health clinic, and the guidance center. An improved communication system is needed. Rehabilitation of the lunchroom should include an improved kitchen and serving area as well as modern cafeteria furniture.

Boiler room rehabilitation, providing automatic firing, an improved fuel room floor and ceiling, and an engineer's office, toilet, shower, and locker area should be accomplished. Improved ventilation is needed. Plaster patching, painting, additional acoustical tiling, and floor and

window repairs are needed in many areas in order to improve the physical environment within the building. The plumbing facilities should be improved, including increased water pressure. The exterior of the building needs painting; cornice, retaining wall, sidewalk and curb repairs should be made.

Site improvements needed are landscaping, additional off-street parking, and improved play areas. The 4.8 acre site is considerably below present day standards for junior high school site adequacy; additional acreage should be provided.