

WILLARD SCHOOL

1615 Queen Avenue N.

1931

Miss M. Lynch, Principal

Originally Erected	1882
Number of Class Rooms	22
Number of Special Rooms	0
Enrollment	843

WILLARD SCHOOL

A one and two story brick structure with two concrete floors and a two story fireproof addition with good egress facilities.

DETAILED REPORT

OCCUPANCY: Class rooms, boiler room, library, teachers lunch room and sub-normal class room, basement. Class rooms, auditorium, gymnasium, first floor, office and class rooms, second floor.

CARE AND MAINTENANCE: Building in fair repair, a few cracks in partition walls, premises neat and orderly.

EGRESS FACILITIES: Good, metal stairways throughout building.

COMMON HAZARDS: LIGHT -- Electric, wiring in rigid conduit. HEAT -- Steam from low pressure boilers in separate fireproof basement room. VENTILATION -- All metal ducts, carried through roof.

SPECIAL HAZARDS: None.

EXPOSURES: Light from small store, dwellings and out buildings.

FIRST AID PROTECTION: A deficient number of chemical fire extinguishers.

PUBLIC PROTECTION: Good. Four double hydrants on six inch water mains conveniently located and two fire departments within one mile, paved streets intervening.

RECOMMENDATIONS

1. Install a sufficient number of approved 2½ gallon chemical fire extinguishers.
2. Install approved firewall doors on openings to boiler room.

RUSSELL AVE. N.

QUEEN AVE. N.

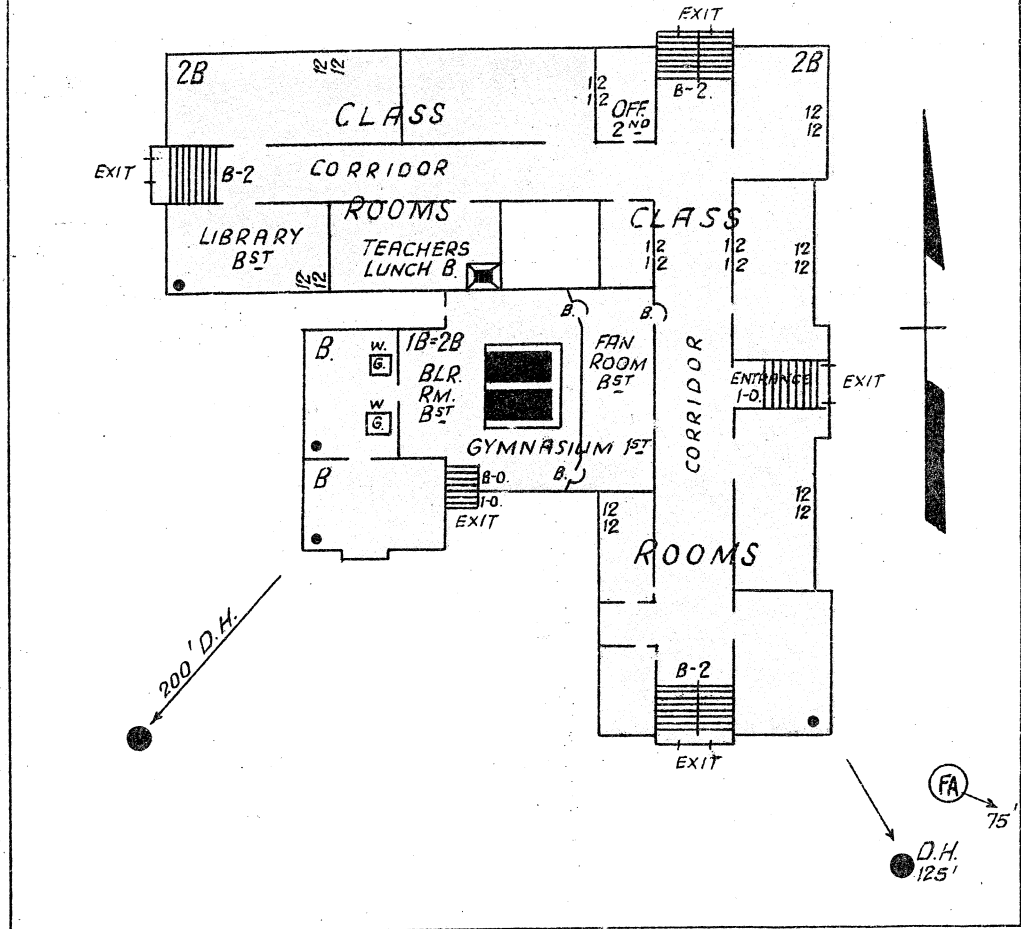
WILLARD SCHOOL

MINNEAPOLIS, MINNESOTA

SCALE: 1 IN. = 50 FT.

6" W.P.

6" W.P.



16TH AVE. N.

ERECTED:
CONDITION: Fair.
HEIGHT: One and two stories.
AREA: 22,300 sq. ft. bst. 20,200 sq. ft. 1st.
 16,560 sq. ft. 2nd.
FLOORS: Reinforced concrete.
ROOF: Ordinary wood joist on old section.
 False wood roof on new section on
 wood supports on concrete slab.
FLOOR OPENINGS: Three open stairways, bst. to 2nd.

