

WHITNEY SCHOOL

1300-1324 19th Avenue N.E.

1931

Miss Sarah H. Wilkinson, Principal

Originally Erected	1920
Number of Class Rooms	6
Number of Special Rooms	0
Enrollment	208

WHITNEY SCHOOL

A frame brick veneered structure with a fireproof boiler room cut off by non-automatic fire door.

DETAILED REPORT

OCCUPANCY: This building contains no special features.

CARE AND MAINTENANCE: Building in good repair and well maintained.

EGRESS FACILITIES: Exit provided from each room direct to outside but interior vestibule doors to exits not free swinging.

COMMON HAZARDS: LIGHT -- Electric, with standard rigid conduit installation. HEAT -- Steam boilers located in separate fireproof room with approved non-automatic fire door on stairway opening to main building, safely arranged. VENTILATION -- Metal ventilating flues exhaust above roof.

SPECIAL HAZARDS: None.

EXPOSURES: None.

FIRST AID PROTECTION: Three one-quart tetrachloride and one 2½ gallon soda acid extinguisher distributed about building, approved type.

PUBLIC PROTECTION: Full city protection; four well supplied hydrants available; two fire stations within mile over paved and graded streets; one block to fire alarm box.

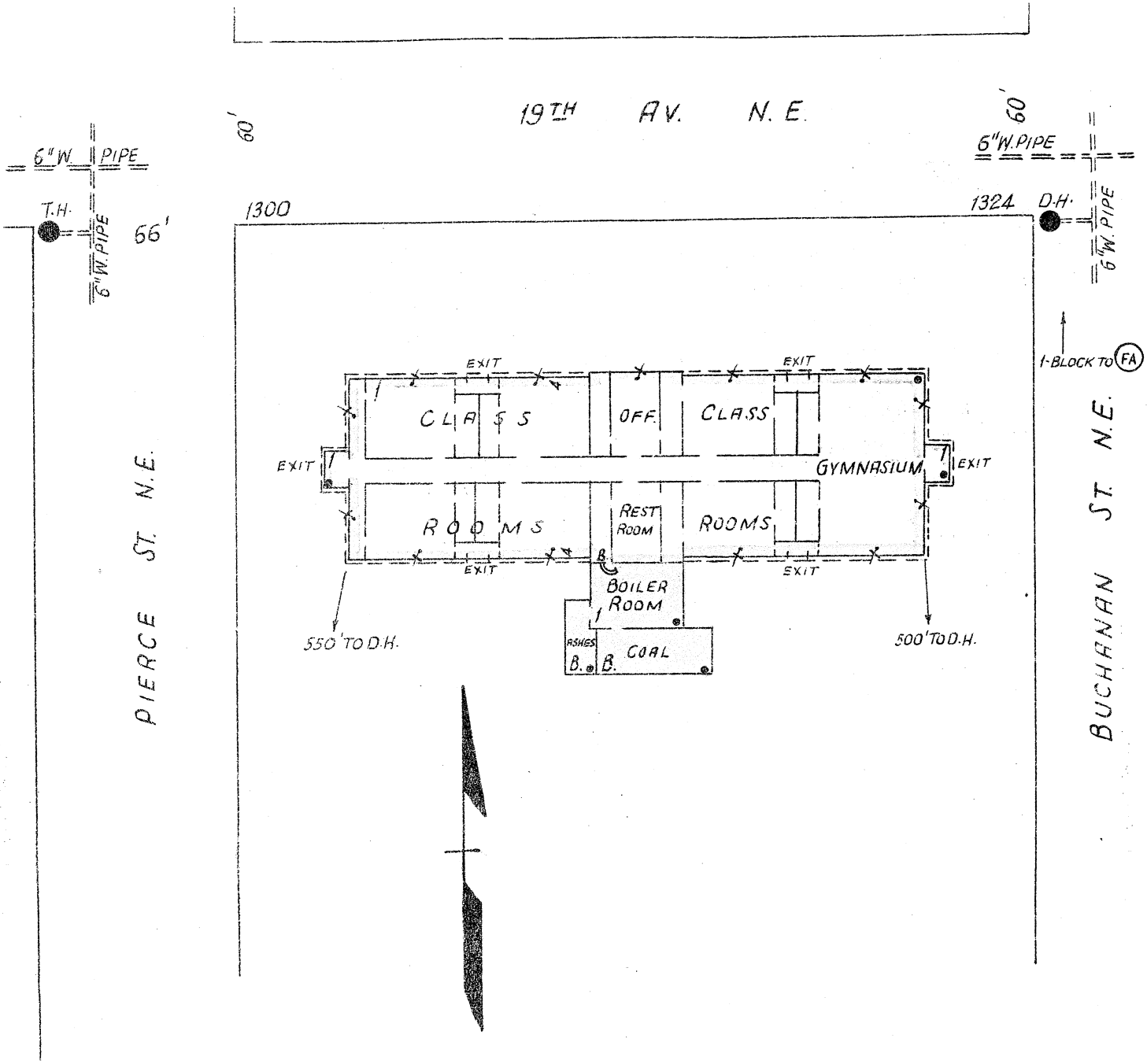
RECOMMENDATIONS

1. Fire door on opening to boiler room should be made automatic closing.
2. Provide sufficient chemical fire extinguishers.
3. Remove all oil stored in main building to fireproof boiler room.
4. Make interior vestibule doors to exits free swinging.

WHITNEY SCHOOL

MINNEAPOLIS, MINNESOTA

SCALE: 1 IN. = 50 FT.



ERECTED	
CONDITION	Good
HEIGHT	One story
AREA	Basement 1,470 Sq. Ft. First 11,544 Sq. Ft.
WALLS	Frame, with 4" brick veneer Boiler room, 12" brick and concrete
FLOORS	Ordinary wood joisted
ROOF	Ordinary wood joisted; boiler room, reinforced concrete slab
FLOOR OPENINGS	One stairway, basement to first concrete enclosure, non-auto fire door