

SCHILLER SCHOOL

26th Avenue and Grand Street N. E.

1931

Miss Mary L. Martin, Principal

Originally Erected	1890
Number of Class Rooms	19
Number of Special Rooms	3
Enrollment	947

## SCHILLER SCHOOL

One of the older schools principally of quick burning interior construction. Portables of ordinary frame construction. Egress facilities are fairly good but blind hallway on second 55 feet long in main building.

### DETAILED REPORT

OCCUPANCY: Main building, manual training, domestic science and sewing rooms are located in the basement; remainder of building contains only ordinary class rooms. Portables, class rooms only.

CARE AND MAINTENANCE: Main building in fair to good repair but oldest section on east is settling and cracking away from remainder of building. Housekeeping is good.

EGRESS FACILITIES: Main building; fairly good as a whole but dead end hallway in west section on second floor. Open stairways of adequate width but subject to smoke hazard from a single fire. Portable; exit direct to outside from each room but interior vestibule doors not free swinging.

COMMON HAZARDS: LIGHT -- Electric, with standard rigid conduit installation. HEAT -- Steam boilers are located in fireproof basement room with non-standard doors on openings and heat main building and north portable; south portable has individual hot water heater for each room, deficient clearance to frame partition walls. VENTILATION -- Metal ventilating flues exhaust through roof.

SPECIAL HAZARDS: Manual training hazards of woodworking and painting well safeguarded. Heat devices in domestic science and sewing rooms properly arranged and safeguarded. One quart of gasoline stored in approved container in manual training room.

EXPOSURES: None.

FIRST AID PROTECTION: Main building; one 5 gallon pump extinguisher in basement and one 2½ gallon and two one quart extinguishers on each floor, inadequate. Portables; one 1 quart extinguisher in north portable, no protection in south portable.

PUBLIC PROTECTION: Full city protection; four well supplied double hydrants available; two fire stations within a mile over paved and graded streets; 100 feet to fire alarm box.

### RECOMMENDATIONS

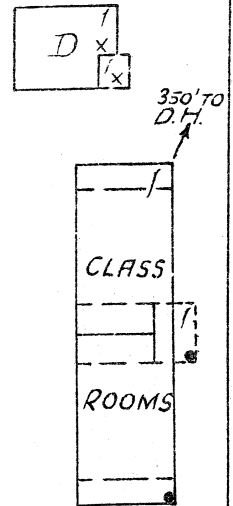
1. Install sufficient number of fire extinguishers.
2. Provide approved automatic closing fire doors on openings to boiler room.
3. Provide safe means of exit from second floor of west wing preferably a smoke proof tower at south end.
4. Interior and exterior exit doors from gymnasium should be kept unlocked during school hours and community gatherings.
5. Eliminate gasoline storage in manual training room.
6. Provide asbestos and metal protection on frame partition walls or provide at least 18 inches clearance from walls to hot water heaters in south portable.
7. Interior vestibule exit doors of portable should be made free swinging.
8. Oil and other combustible storage should be removed from location in back of fan equipment to fireproof boiler room.

# SCHILLER SCHOOL

MINNEAPOLIS, MINNESOTA

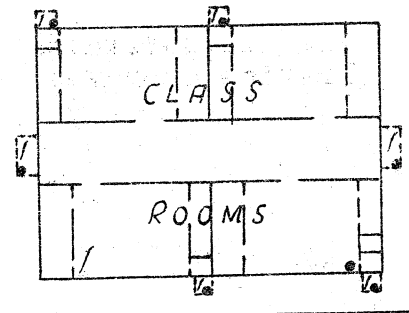
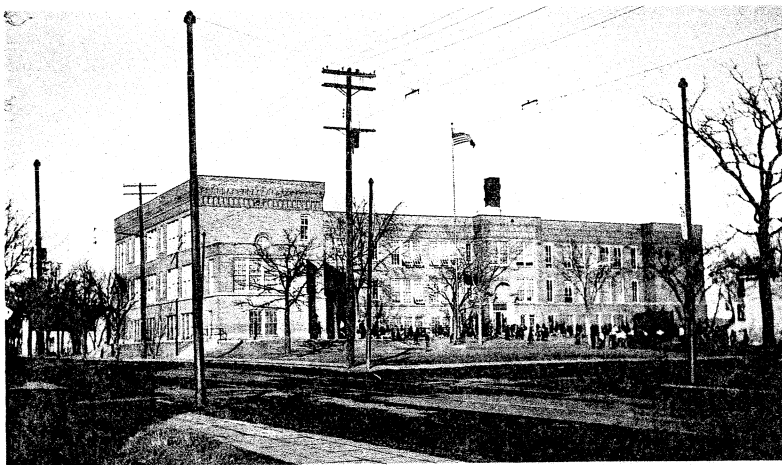
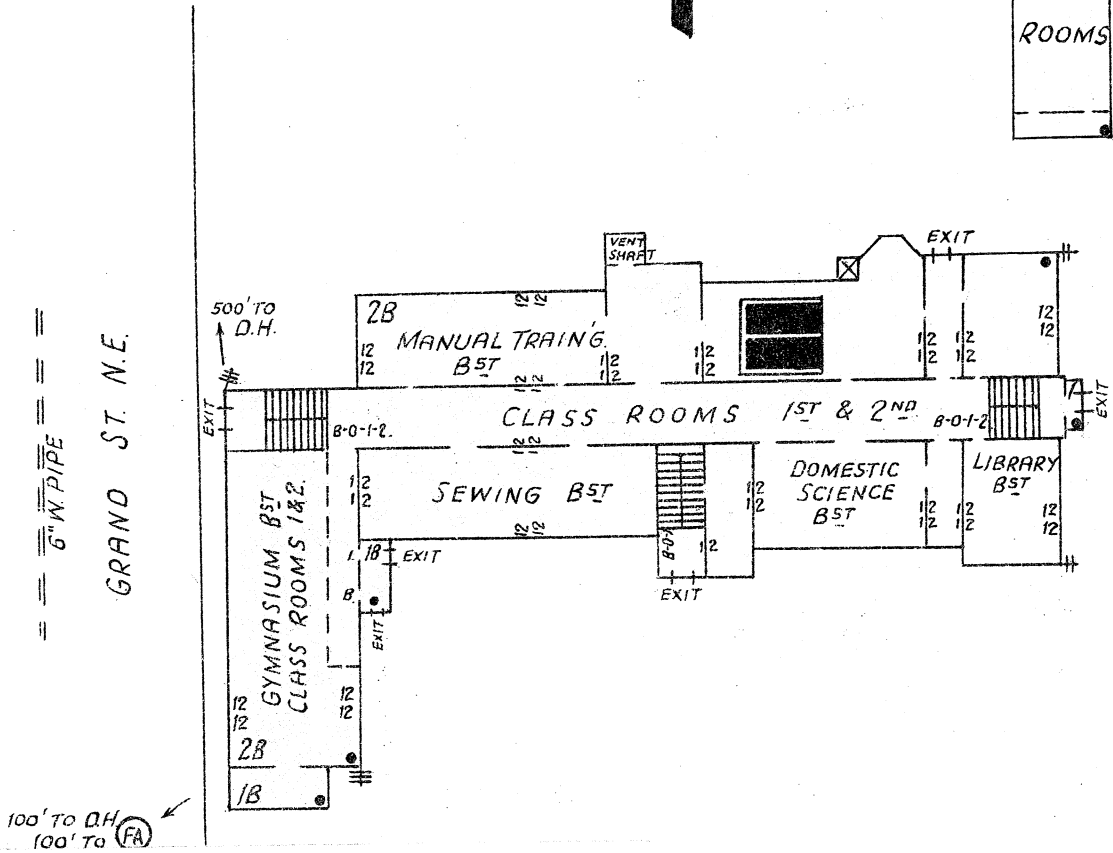
SCALE: 1 IN. = 50 FT.

**ERECTED:** 1890, 1909 and 1916.  
**CONDITION:** Good.  
**HEIGHT:** One and two stories.  
**AREA:** Basement, 17,000 Sq. Ft.  
 First and second, 16,600 Sq. Ft. each.  
**WALLS:** 12" brick.  
**FLOORS:** Ordinary wood joisted, principally, some of reinforced concrete.  
**ROOF:** Ordinary wood joisted, composition surfacing.  
**FLOOR OPENINGS:** Three open stairways, basement to first and two open stairways, first to second.  
**PORTABLES:** One story ordinary frame composition roofed structures.



60'

CALIFORNIA ST. N.E.



D.H.

60'

26TH AVE. N. E.

N. P. RY. SPUR TRACK