

PENN SCHOOL

3620 Penn Avenue N.

1931

Miss G. A. Coleman, Principal

Originally Erected	1907
Number of Class Rooms	17
Number of Special Rooms	0
Enrollment	737

PENN SCHOOL

A two story structure with wood floors and roof, with a two story addition with two fireproof floors.

DETAILED REPORT

OCCUPANCY: Boiler room, teachers lunch room, library and nurses room, basement. Class rooms, first. Office and class rooms, second.

CARE AND MAINTENANCE: Building not in best of repair, premises neat.

EGRESS FACILITIES: Poor, stairways with one exception are wood and of open type that would permit rapid spread of smoke and flame.

COMMON HAZARDS: LIGHT -- Electric, wiring in rigid conduit. HEAT -- Steam heat from two high pressure boilers in separate fireproof basement room, not cut off. VENTILATION -- Metal vent ducts are carried through roof.

SPECIAL HAZARDS: None.

EXPOSURES: None.

FIRST AID PROTECTION: None excepting a deficient number of chemical fire extinguishers.

PUBLIC PROTECTION: Poor, ample water supply afforded by three double hydrants on 12 inch water main, over one mile to nearest fire department, no other fire department within two miles, paved streets intervening.

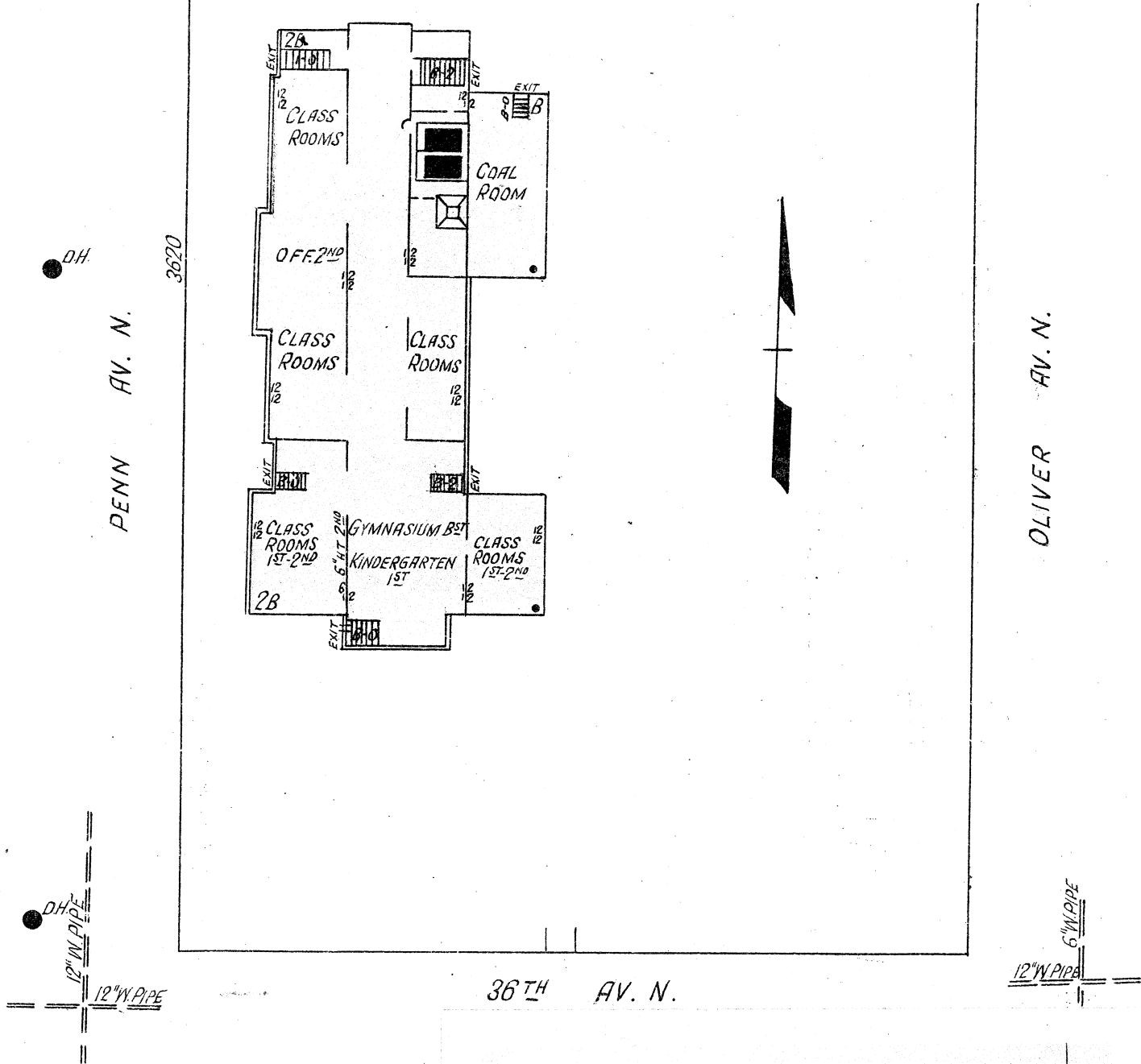
RECOMMENDATIONS

1. Cut off boiler room by the installation of approved fire wall doors.
2. Install a sufficient number of approved chemical fire extinguishers.
3. Provide a safe means of exit from old section of building, preferably a smoke proof stair tower, and replace present wood stairways with those of fireproof construction.
4. Provide an additional exit to the outside from kindergarten room.
5. Install a stairway from basement to first floor exit in northwest corner of building.
6. Discontinue the closing of exit from boiler room with wood boards.
7. Remove combustible library equipment from under combustible stairway in northeast corner of basement.
8. Remove storage room for janitor's and building equipment from underneath combustible stairway in northwest corner of basement and tear out partition or close up solidly to prevent accumulation of rubbish.

PENN SCHOOL

MINNEAPOLIS, MINNESOTA

SCALE: 1 IN. = 50 FT.



ERECTED	1907, 1914.
CONDITION	Fair.
HEIGHT	Two stories.
AREA	14,184 Sq. Ft. Basement 12,684 Sq. Ft. first and second.
WALLS	12" brick.
FLOORS	Ordinary wood floors old section Concrete and tile addition.
ROOF	Composition on 7/8" boards on wood joists.
FLOOR OPENINGS	Three open stairways, basement to first; two open stairways, first to second.

