

MONROE SCHOOL

Franklin Avenue E. and 23rd Avenue

1931

Myrtle Reed, Principal

Originally Erected	1878
Number of Class Rooms	28
Number of Special Rooms	2
Enrollment	1009

MONROE SCHOOL

This school is one of the older type of mixed ordinary wood joisted brick and frame construction.

DETAILED REPORT

OCCUPANCY: Boiler room, auditorium, manual training and teachers lunch room in basement. Class rooms first and second.

CARE AND MAINTENANCE: Good.

EGRESS FACILITIES: Open wooden stairways make egress facilities only fair.

COMMON HAZARDS: LIGHT -- Electric with wiring in rigid conduit.

HEAT -- Steam from battery of two coal fired low pressure boilers located in separate basement room. Ceiling over boiler room, plaster on tile nailed to ordinary wood joisted floor. No standard cut off. VENTILATION -- Metal ventilating ducts extend through roof.

SPECIAL HAZARDS: WOODWORKING -- Bench work only, room cleaned daily. PAINTING -- Occasional with paint stock kept in metal cabinet. Two gas ranges in lunch rooms safely arranged.

EXPOSURES: Dwellings only.

FIRST AID PROTECTION: Poor protection afforded by insufficient number of chemical extinguishers.

PUBLIC PROTECTION: Four triple head hydrants on 6 inch mains available within 200 feet. Fire department located on paved street two blocks away. Fire alarm 250 feet.

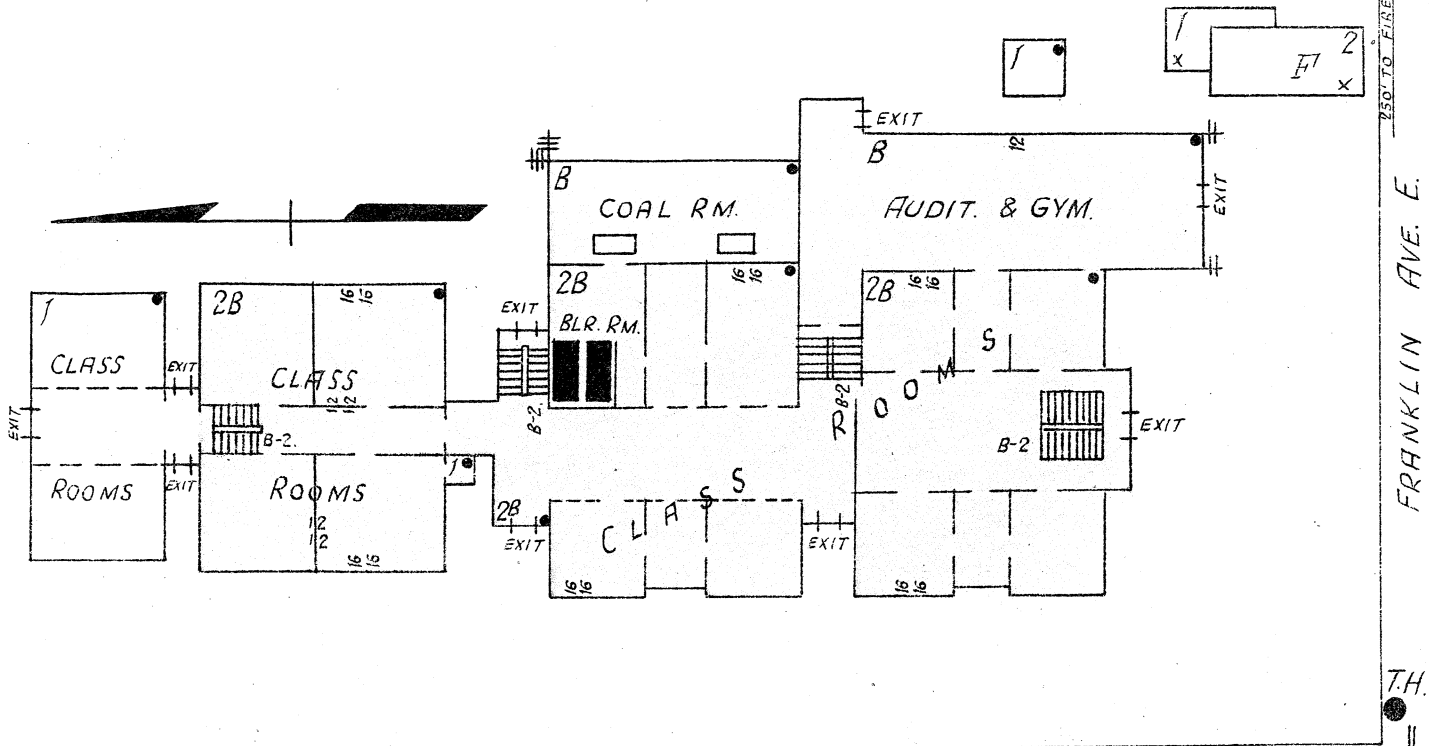
RECOMMENDATIONS

1. Chemical extinguisher protection should be made standard.
2. Wood floor over boiler room should be replaced with fireproof floor and all openings to room protected with approved three ply fire doors maintained automatic.
3. Exit doors not provided with panic bars should be so equipped.

MONROE SCHOOL

MINNEAPOLIS, MINNESOTA

SCALE: 1 IN.=50 FT.



250' TO FIRE ALARM

FRANKLIN AVE. E.

● T.H.

23RD AVE. SO.

6" W.P.

5" W.P.

● T.H.

● T.H.

ERECTED 1878, additions 1903, 1920.
CONDITION Good.
HEIGHT One and two stories.
AREA 22,875 Sq. Ft. basement
 20,075 Sq. Ft. first
 17,625 Sq. Ft. second.
WALLS Brick, portable frame.
FLOORS Ordinary wood joist.
ROOF Ordinary wood joist, tar and gravel surface.
FLOOR OPENINGS Four open stairways, basement to second floor.

