

MINNEHAHA SCHOOL

52nd Street E. and 41st Avenue

1931

Miss Clyde E. Yeaton, Principal

Originally Erected	1928
Number of Class Rooms	18
Number of Special Rooms	0
Enrollment	680

MINNEHAHA SCHOOL

This school is one of the new and better type of fireproof schools.

DETAILED REPORT

OCCUPANCY: Boiler room, transformer room and storage in basement. Auditorium, office, teachers lunch room and class rooms first. Class rooms, second.

CARE AND MAINTENANCE: Building comparatively new and receives excellent care.

EGRESS FACILITIES: Good. Ample exits with all doors, where necessary, provided with panic bars. Width of stairways to second floor slightly deficient.

COMMON HAZARDS: LIGHT -- Electric, wiring in rigid conduit well installed. HEAT -- Steam from two coal fired low pressure boilers in fireproof basement room with two communicating openings protected by metal covered two ply self-closing fire doors. VENTILATION -- Metal ventilating ducts extend through roof.

SPECIAL HAZARDS: Safely installed gas range in teachers lunch room. Oil cooled transformers, total $87\frac{1}{2}$ K.V.A., located in slightly sub-standard vault.

EXPOSURES: None.

FIRST AID PROTECTION: Poor protection afforded by chemical extinguishers, deficient in number.

PUBLIC PROTECTION: Six double head hydrants on 6 inch mains available within 400 feet. Fire department located one and one-fourth miles distant over paved and unpaved streets.

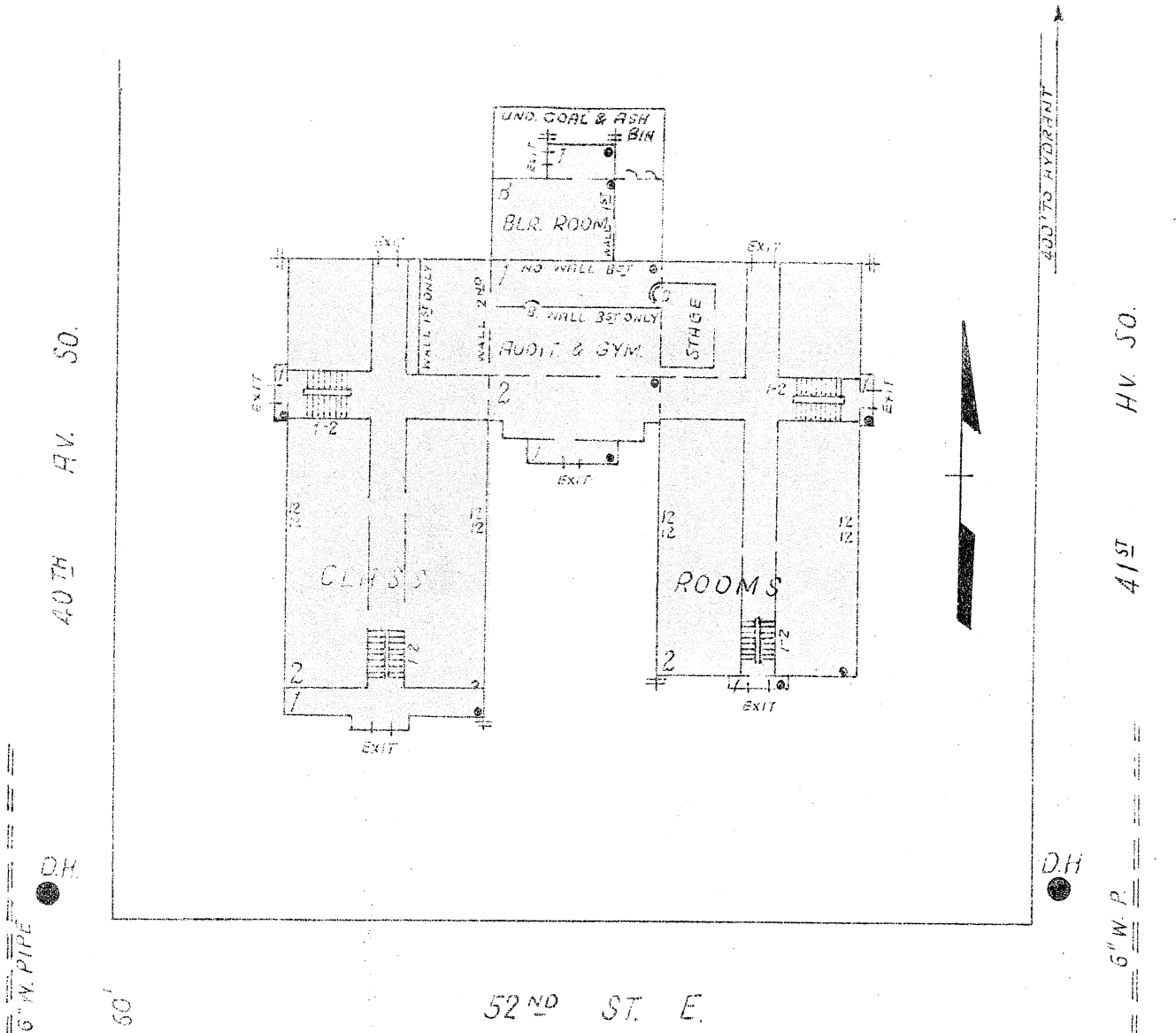
RECOMMENDATIONS

1. Chemical extinguisher equipment should be made standard.
2. Approved two ply fire door should be provided for opening to roof space.
3. Transformer vault should be made standard.
4. Two openings to boiler room should be provided with approved three ply fire doors.

MINNEHAHA SCHOOL

MINNEAPOLIS, MINNESOTA

SCALE: 1 IN. = 50 FT.



ERECTED
CONDITION
HEIGHT
AREA

1928.
Excellent.
One and two stories.
Basement, 4,000 Sq. Ft.; first, 18,550
Sq. Ft.; second, 15,450 Sq. Ft.

WALLS
FLOORS
ROOF

Panel, 8" hollow tile, 4" brick faced.
Reinforced concrete and tile
False wood over reinforced concrete
and tile ceiling

FLOOR
OPENINGS

Four open stairways, first to second;
one enclosed stairway, basement to
first, auto fire door

