

McKINLEY SCHOOL

910-920 37th Avenue North

1931

Miss M. Hansen, Principal

Originally Erected	1902
Number of Class Rooms	21
Number of Special Rooms	0
Enrollment	837

McKINLEY SCHOOL

A two story structure with wood floors and roof and a one to two story fireproof addition with concrete floors and ceiling, false wood roof on wood supports resting on concrete slab ceiling.

DETAILED REPORT

OCCUPANCY: Boiler room, nurses room and class rooms, basement. Office and class rooms including kindergarten on first floor, class rooms and teacher's lunch and rest rooms, second floor.

CARE AND MAINTENANCE: Building in good repair. Premises neat and orderly.

EGRESS FACILITIES: Fair. Hallway second floor partially blocked by music stands. Outside fire escape not shielded from the building.

COMMON HAZARDS: LIGHT -- Electric wiring in rigid conduit, in good condition. HEAT -- Steam from low pressure boilers non-fireproof room, basement. VENTILATION -- All vent ducts carried through roof.

SPECIAL HAZARDS: None.

EXPOSURES: None.

FIRST AID PROTECTION: None except a deficient number of chemical fire extinguishers.

PUBLIC PROTECTION: Fair public protection, two conveniently located double hydrants on six inch water mains and one fire department within one mile, paved streets intervening. Fire alarm box on corner.

RECOMMENDATIONS

1. Install sufficient number of approved chemical fire extinguishers.
2. Replace wood joisted floor over boiler room with fireproof floor and protect openings to boiler room with approved fire-wall doors.
3. Provide exits from second floor in each end of fireproof section.
4. Install approved wire glass windows on openings exposing fire escape.

McKINLEY SCHOOL

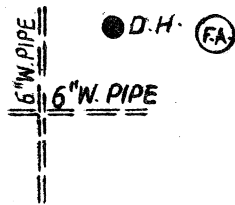
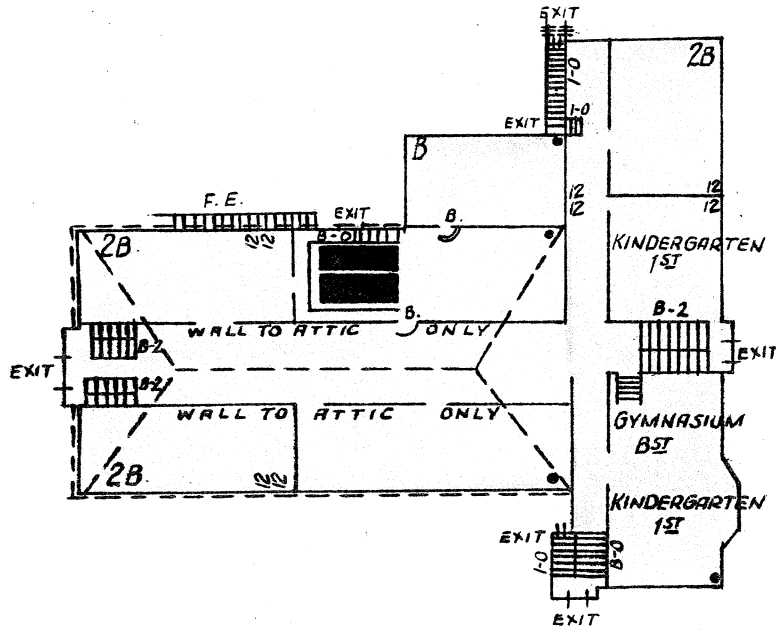
MINNEAPOLIS, MINNESOTA

SCALE: 1 IN.=50 FT.

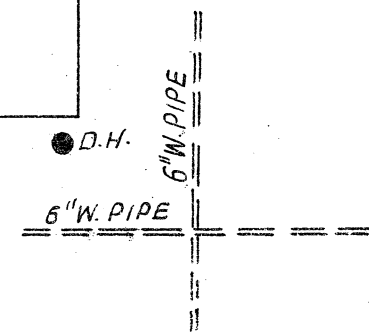


COLFAX AVE. N.

BRYANT AVE. N.



37TH AVE. N.



ERECTED 1902-1911-1918.
CONDITION Good
HEIGHT Two stories.
AREA 15,000 Sq. Ft. Bst., 14,000 Sq. Ft. 1st and 2nd.
WALLS 12" Brick.
FLOORS Ordinary wood joist in old section, reinforced in new addition.
ROOF Slate and composition on 7/8" boards supported on wood joists.
FLOOR OPENINGS: Two open stairs, basement to second.

