

GRANT SCHOOL

1221 Lowry Avenue North

1931

Miss G. Shaughnessy, Principal

Originally Erected	1889
Number of Class Rooms	22
Number of Special Rooms	0
Enrollment	810

GRANT SCHOOL

A two story structure with wood floors and roof.

DETAILED REPORT

OCCUPANCY: Sub-normal manual training, boiler room, gymnasium, nurses room, teachers lunch room, basement. Class rooms and office, first floor. Class rooms, second floor.

CARE AND MAINTENANCE: Building in good repair, premises neat and orderly.

EGRESS FACILITIES: Fair. Open stairways of metal construction, fairly well separated.

COMMON HAZARDS: LIGHT -- Electric, wiring in rigid conduit in good condition. HEAT -- Steam, two high pressure boilers in fireproof room without standard cut off. VENTILATION -- Metal ducts carried through roof.

SPECIAL HAZARDS: None.

EXPOSURES: Light from dwellings and out buildings at from 30 to 40 feet. Unprotected windows in school.

FIRST AID PROTECTION: None except deficient number of chemical fire extinguishers.

PUBLIC PROTECTION: Good public protection. Four fire hydrants conveniently located on 6 inch water mains, and three fire departments within one mile, with paved streets intervening.

RECOMMENDATIONS

1. Install sufficient $2\frac{1}{2}$ gallon approved fire extinguishers.
2. Install approved fire wall doors on openings to boiler room.
3. Provide a safe means of egress from the east end of gymnasium section of building preferably a smoke proof stair tower or ramp.
4. Install an exit leading from blind pocket in basement to the outside, on north end of building.
5. Arrange all screens on basement windows to open from the inside.

GRANT SCHOOL

MINNEAPOLIS, MINNESOTA

● T.H.

SCALE: 1 IN. = 50 FT.

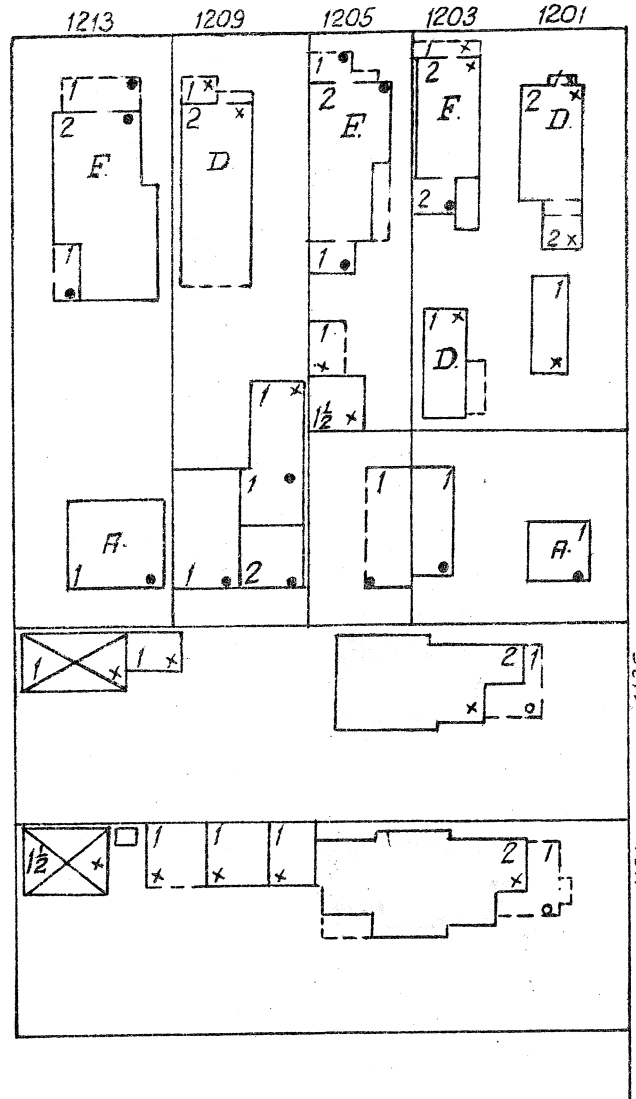
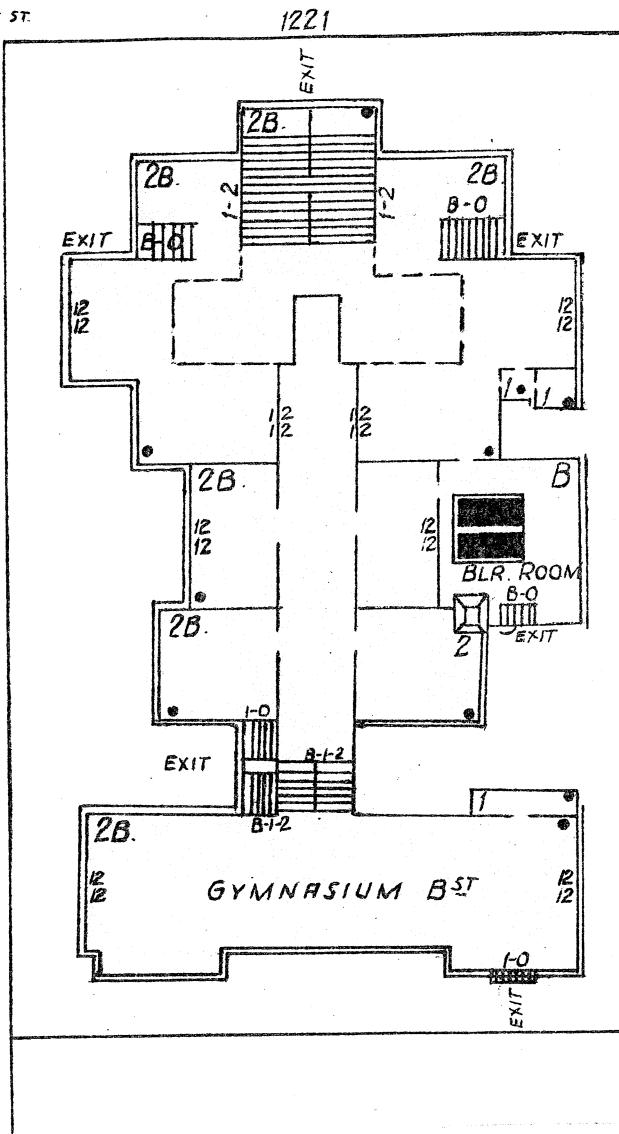
FA

12TH AVE. N.

ACROSS ST.

● T.H.

GIRARD AVE. N.



● T.H.

FREMONT AVE. N.

1131

- ERECTED:**
- CONDITION:** Good
- HEIGHT:** Two stories.
- AREA:** 19,000 Sq. Ft.
- WALLS:** 12" Brick.
- FLOORS:** Ordinary wood floors
- ROOF:** Ordinary composition on 7/8" boards supported on wood joists.
- FLOOR OPENINGS:** Two open stairways, Bst. to 2nd; one from closet on 2nd to cock loft; 1" wood panel door, not self-closing.

