

ADAMS SCHOOL

16th Avenue S. and E. Franklin

1931

Mr. Edwin C. Culbert, Principal

Originally Erected	1874
Number of Class Rooms	23
Number of Special Rooms	0
Enrollment	665

ADAMS SCHOOL

Original building is among the older structures with quick burning wood interior. Several store rooms under wood stairs.

DETAILED REPORT

OCCUPANCY: This building contains no special features.

CARE AND MAINTENANCE: Building in fair repair and well maintained. Fire in attic several years ago, most severely charred wood has been removed, remainder has been passed by building inspector as retaining ample strength. Accumulation of boxes etc. in cloak room of playroom in basement.

EGRESS FACILITIES: Fair. Four open wood stairways but well located. Iron fire escape of no value. Gymnasium used as assembly, ample exits direct to outside. Exit lights and panic bars provided.

COMMON HAZARDS: LIGHT -- Electric lights with wiring in metal conduit. HEAT -- Low pressure steam boilers in basement, combustible ceiling over. VENTILATION -- Metal ventilating flues are carried through roof.

SPECIAL HAZARDS: Coffee making in lunch room on gas range, safe. Brush painting in several class rooms, paints stored in metal cabinet and on wood shelves.

EXPOSURES: None.

FIRST AID PROTECTION: Inadequate supply of chemical fire extinguishers, there being three on each floor and in the basement.

PUBLIC PROTECTION: Ample number of well supplied hydrants nearby; station seven blocks from school over paved streets; fire alarm box adjoining.

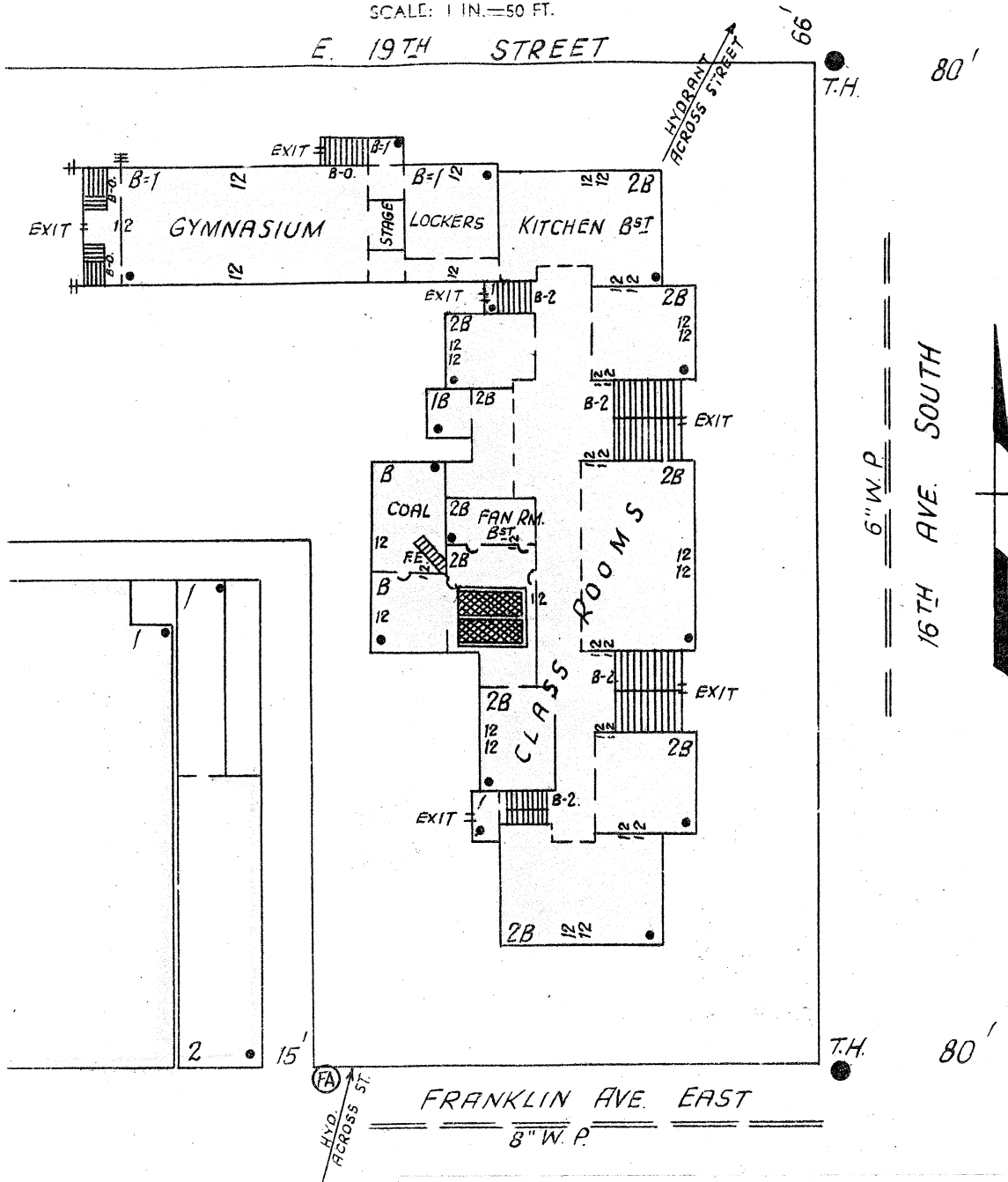
RECOMMENDATIONS

1. Install sufficient chemical fire extinguishers.
2. Discontinue using space under stairs for storage.
3. All paints should be stored in metal cabinets.
4. Install concrete slab ceiling over boilers.
5. Remove the accumulation of boxes in the cloak room of the playroom in the basement.

ADAMS SCHOOL

MINNEAPOLIS, MINNESOTA

SCALE: 1 IN. = 50 FT.



ERECTED: 1874, 1884, 1886, 1904, 1923.
CONDITION: Fair.
HEIGHT: One and two stories.
AREA: Bst. 20,800 sq. ft. 1st 15,200 sq. ft. 2nd 14,600 sq. ft.
WALLS: 12" brick.
FLOORS: Ordinary wood joisted.
ROOF: Ordinary wood joisted, slate and composition surfaced.
FLOOR OPENINGS: Four open stairways, bst. to 2nd flr.

