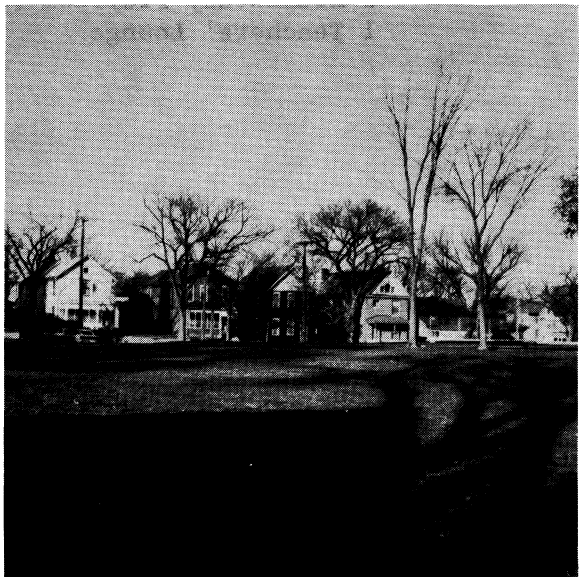
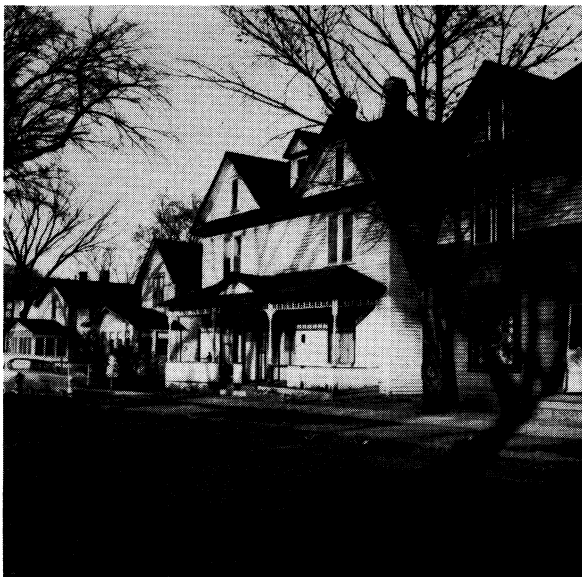
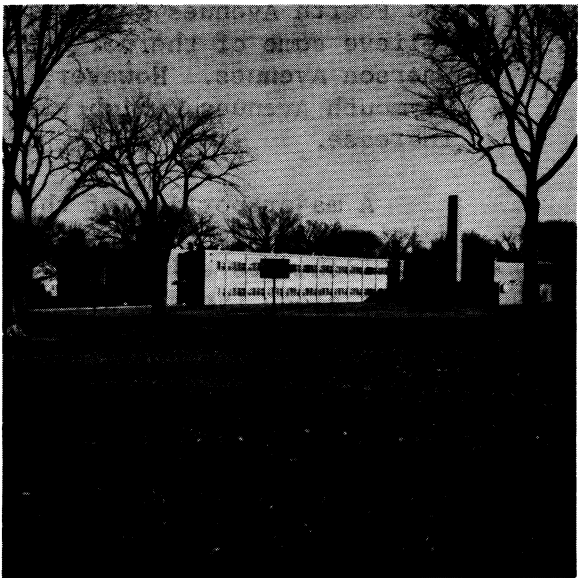
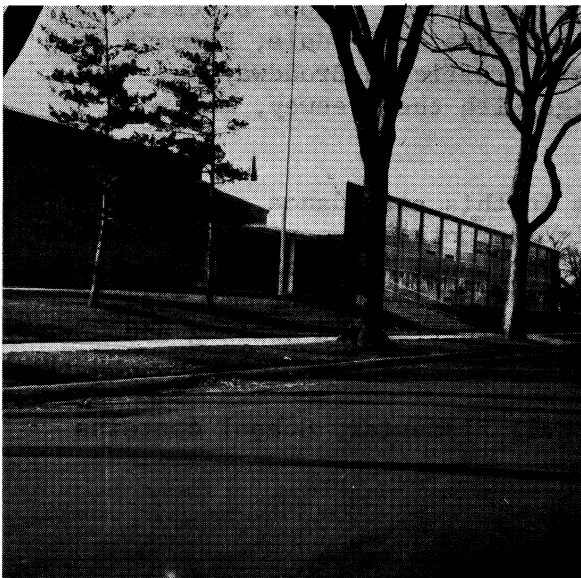


HALL ELEMENTARY SCHOOL



HALL ELEMENTARY SCHOOL

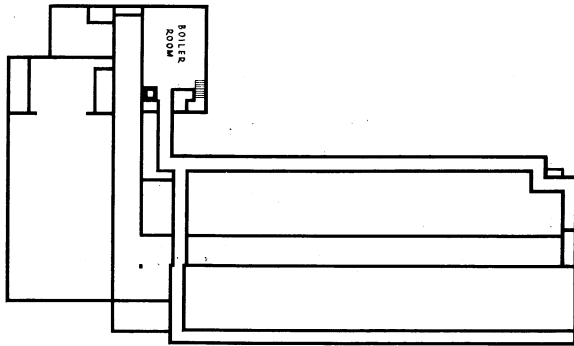
The Elizabeth L. Hall Elementary School, a two-story masonry structure, was erected in 1960. It is located on a 5.2 acre site at 1601 Aldrich Avenue North.

Broadway Avenue West and Seventh Street North, serving as part of Hall's attendance area boundaries, are heavily traveled arterials. In addition, Lyndale, and Plymouth Avenues North, and the one-way pair of Fremont and Emerson Avenues North, carry heavy volumes of traffic through Hall's attendance area. The freeway (I 94), to be built between Third and Fourth Avenues North (in the Blaine Elementary School District) may relieve some of the north-south traffic volume on Lyndale, Fremont, and Emerson Avenues. However, the east-west traffic on Broadway and Plymouth Avenues, which will interchange with the freeway, may well increase.

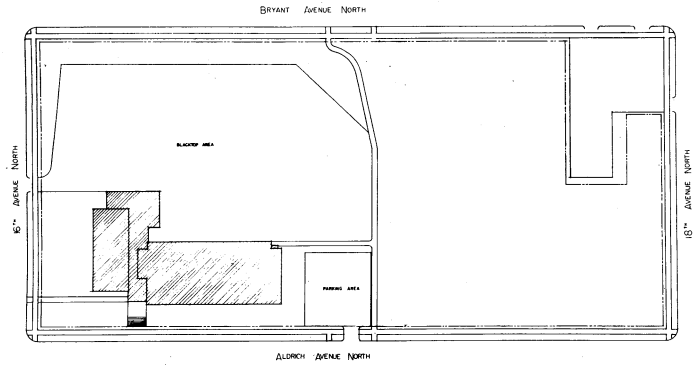
A major portion of the residences in this attendance area are multiple-family dwellings; much of this is rental property. Commercial establishments exist along Broadway and Plymouth Avenues and to a lesser extent along Lyndale Avenue. Increased school enrollment may result from population shifts due to freeway construction and Housing and Redevelopment projects in the Near-North Community.

As may be noted on Plate 22, the Hall Elementary School contains the following basic spaces:

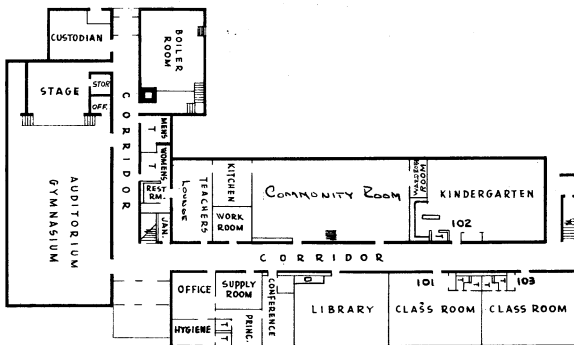
- 9 Classrooms
- 1 Kindergarten
- 1 Instructional Materials Center (library)
- 1 Special Use Room (regular classroom)
- 1 Administrative Suite (general offices, health service)
- 1 Multi-Purpose Room (community room)
- 1 Elementary Playroom (auditorium-gymnasium)
- 1 Teachers' Lounge



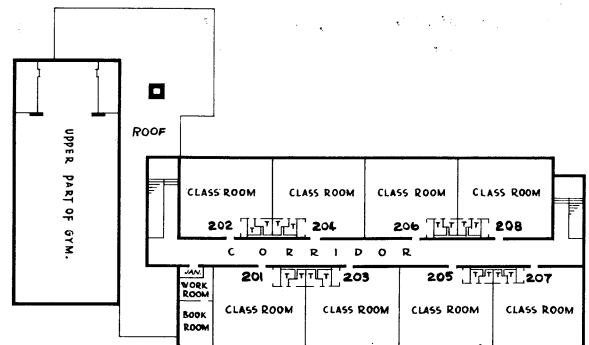
GROUND FLOOR



PLOT PLAN



FIRST FLOOR



SECOND FLOOR

CAPACITY OF THE HALL ELEMENTARY SCHOOL

The Hall Elementary School has an optimum capacity of 265 pupils. This figure is obtained by allotting 40 pupils to each kindergarten (20 pupils in each room during each half-day session) and 25 pupils to each classroom. By increasing each of the classroom groups by five pupils on the average and each kindergarten session by five pupils, the rated capacity of the Hall Elementary School is 320 pupils.

UTILIZATION OF THE HALL ELEMENTARY SCHOOL

At the end of the fourth week in September, 1962, this school had the following grade distribution:

<u>Grade</u>	<u>Number</u>
K	98
1	74
2	63
3	52
4	59
5	69
6	<u>53</u>
Total	468

The total enrollment of 468 at the Hall School is 148 more than the building's rated capacity, and this enrollment exceeds the optimum capacity by 203 pupils. The pupil-teacher ratio in grades 1-6 in September, 1962, was 33.6 to 1.

SCHOOL BUILDING FACT SHEET

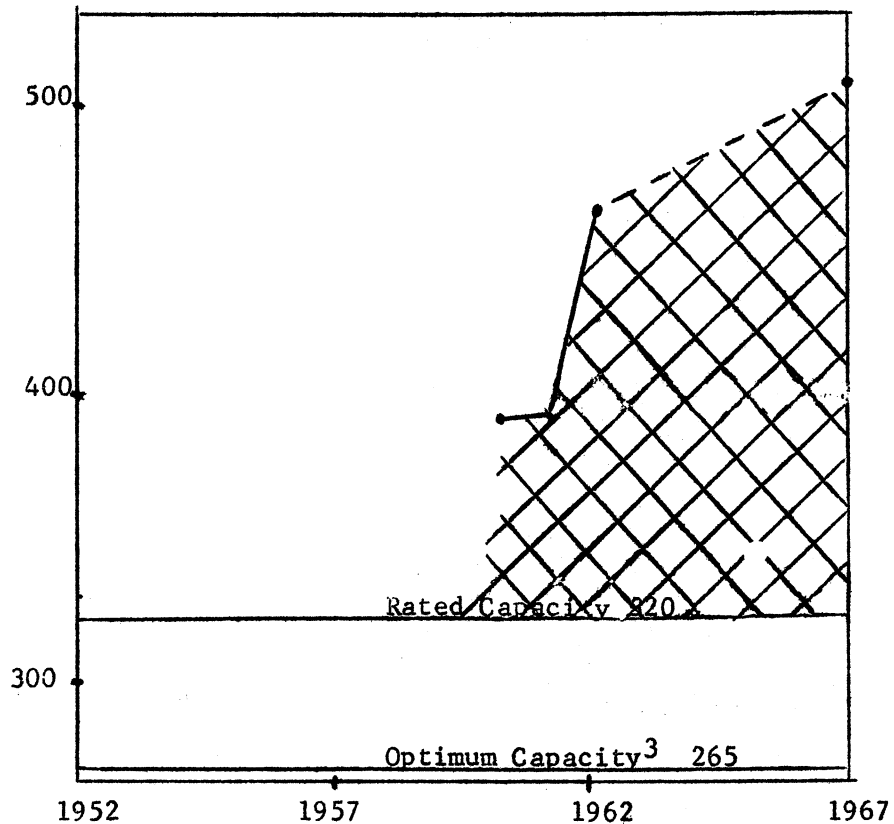
Donald J. Leu & John J. McNicholas, Jr.
Educational Facilities Study
Michigan State University

SCHOOL Hall Elementary ADDRESS 1601 Aldrich Avenue North
 GRADES K-6 BUILT 1960 ADDITIONS None
 STRUCTURE Masonry STORIES 2
 SITE AREA 5.2 acres PLAYGROUND AREA _____
 NUMBER OF CLASSROOMS 9 OTHER SPACES: Instructional Materials
 NUMBER OF KINDERGARTENS 1 Center, Special Use Room, Administrative
 NUMBER OF SPECIAL EDUCATION ROOMS 0 Suite, Multi-Purpose Room
 RATED CAPACITY¹ 320 SEPTEMBER, 1962 ENROLLMENT 468

ENROLLMENT

Year	Sept
1952	
1953	
1954	
1955	
1956	
1957	
1958	
1959	
1960	392
1961	394
1962	468
1967 ²	505

ENROLLMENT TREND



¹Formula: 30 per classroom, 50 per kindergarten, 15 per special education room
²Estimate based upon data obtained from the Minneapolis Public Schools' Office of Research, Census, and Attendance
³Formula: 25 per classroom, 40 per kindergarten, 10 per special education room

NEEDED IMPROVEMENTS

1. Storage
2. Janitorial shower and toilet
3. Instructional Materials Center (library)
4. Administrative Suite

SUMMARY

The Hall Elementary School, erected in 1960, is a modern, well-constructed building. Certain improvements, however, would increase its educational adequacy.

Additional storage is needed, and the custodian's room needs toilet and shower facilities. The instructional materials center needs a teacher work area, and a guidance center in the administrative suite should be provided.

The 5.2 acre site provides adequate play and parking areas for children and staff, respectively.

A six classroom addition is included in the 1963 Bond program.