

A P P E N D I X

APPENDIX

A description of four additional properties owned by the Minneapolis Public School system is included in the following paragraph:

1. The 3.63 acre Cavell Site is located at 34th Avenue Northeast and Fillmore Street. At present it is not being used by the school system. See Plate 132 for the Cavell site plan.
2. The Administration Building, a three-story masonry and wood structure, was erected in 1914 with an addition constructed in 1921. It has a basement. In addition, the Administration plant consists of a garage, erected in 1931, a warehouse, and two storage sheds. The buildings are located on a 5.5 acre site at 807 Northeast Broadway. See Plate 133 for site and floor plans.
3. The Johnson Elementary School, a two story masonry and wood structure was erected in 1910, and an addition was constructed in 1915. It has a basement. The building is located on a 3.6 acre site at 38th Avenue South and 31st Street. At present the property is being leased to the Upper Midwest Research and Development Council. See Plate 134 for site and floor plans.
4. The LaFayette Elementary School, a two-story masonry and wood structure, was erected in 1907. It has a basement. The building is located on a .93 acre site at Lyndale and Laurel Avenues North. The ultimate disposition of this property appears to be demolition due to its location in relation to the Interstate Freeway (I 94) route. See Plate 135 for site and floor plans.

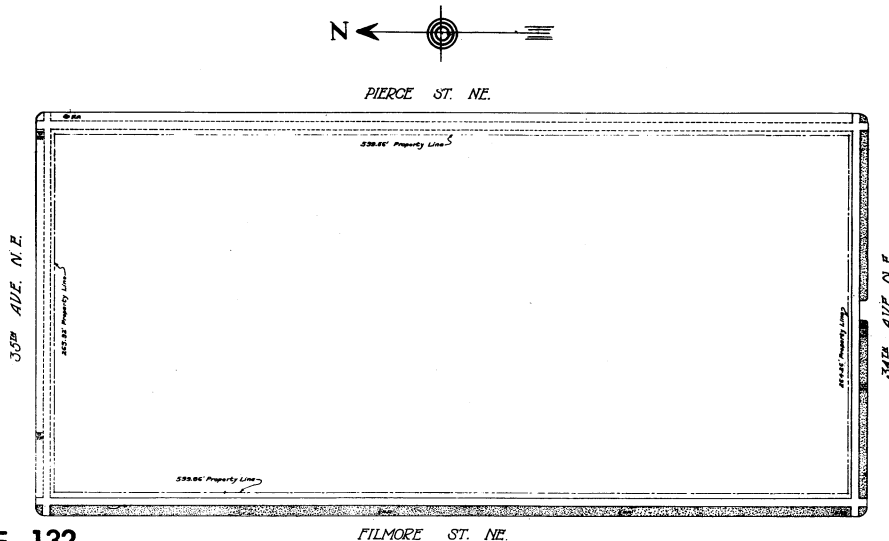
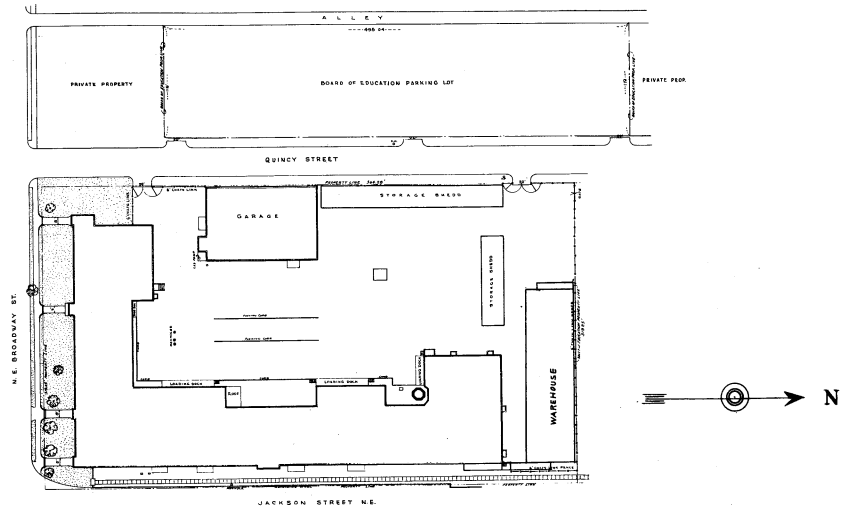


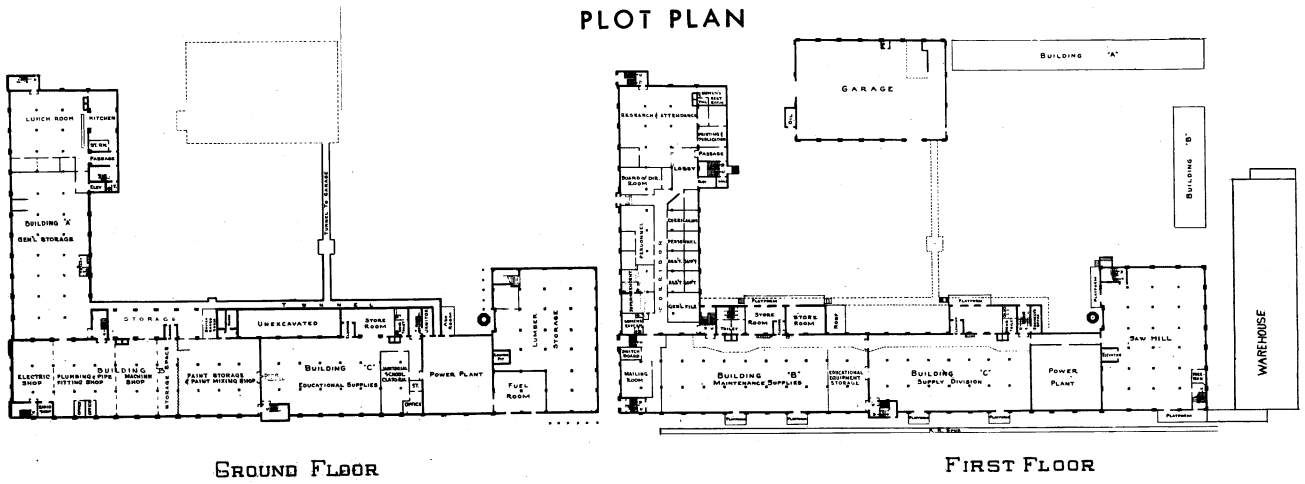
PLATE 132

FILLMORE ST. NE.

CAVELL SITE

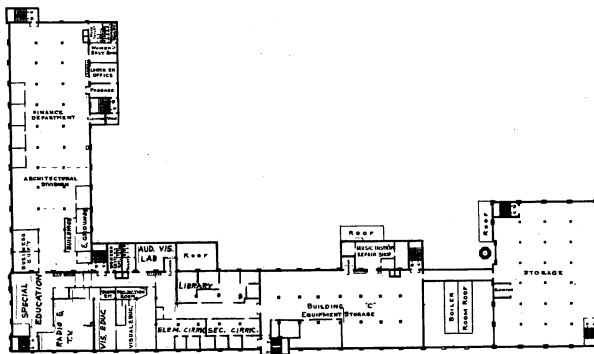


**PLOT PLAN**

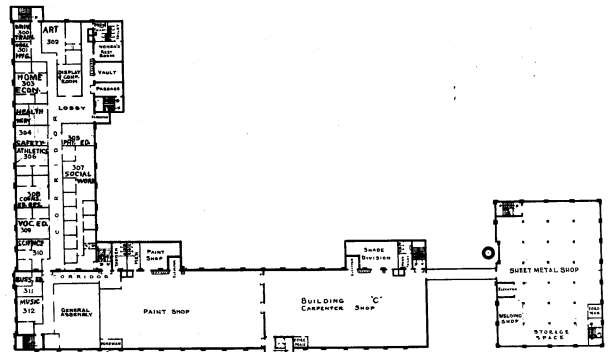


**GROUND FLOOR**

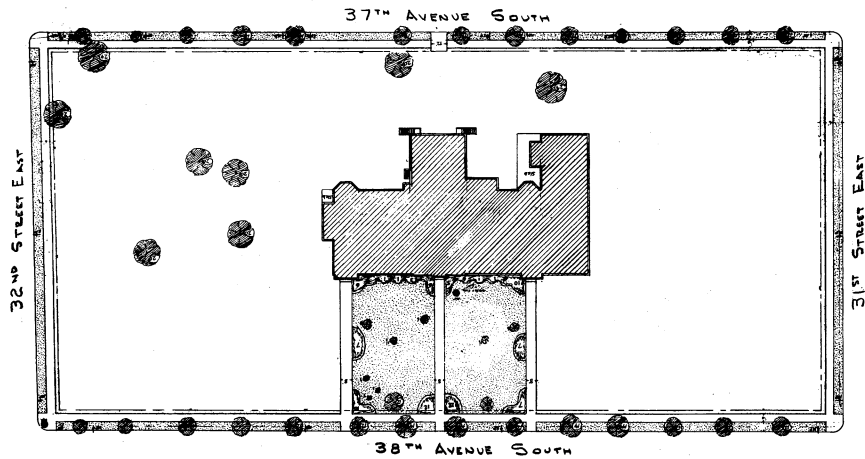
**FIRST FLOOR**



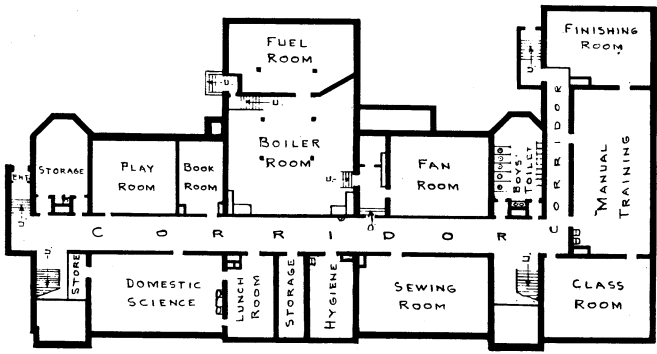
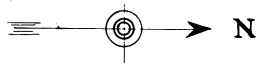
**SECOND FLOOR**



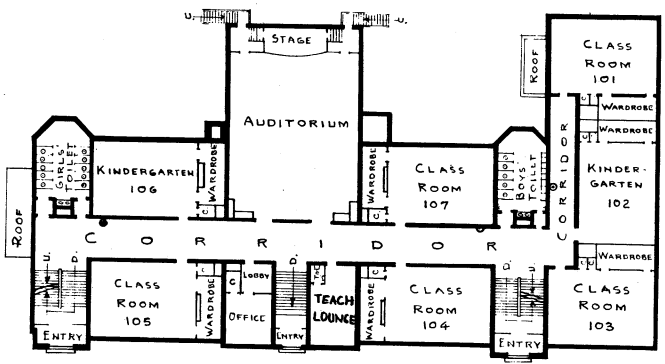
**THIRD FLOOR**



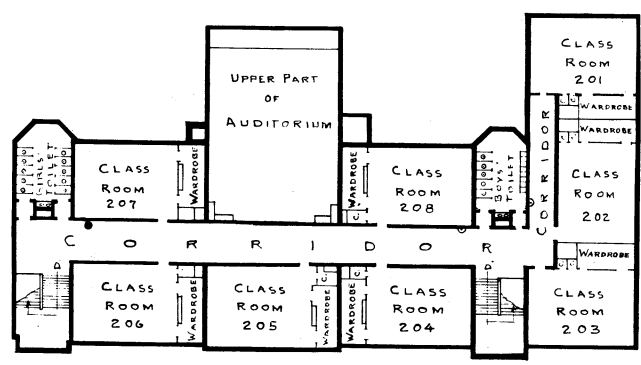
PLOT PLAN



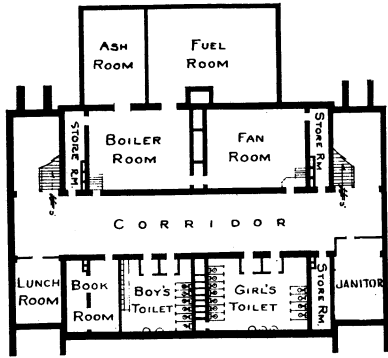
GROUND FLOOR



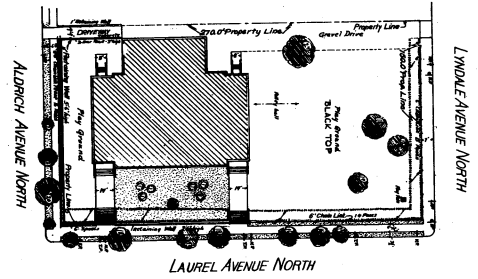
FIRST FLOOR



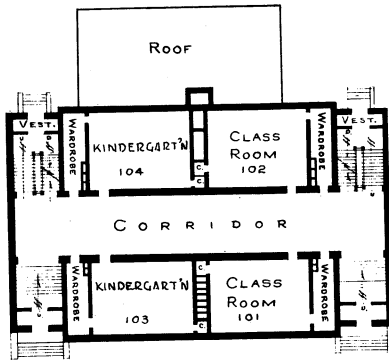
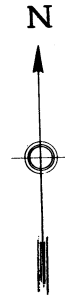
SECOND FLOOR



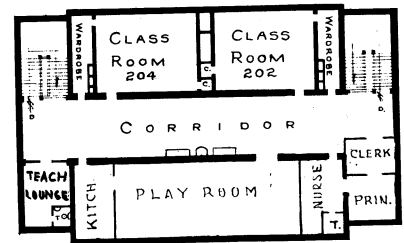
GROUND FLOOR



PLOT PLAN



FIRST FLOOR



SECOND FLOOR