

WEST HIGH SCHOOL

Hennepin Avenue and W. 28th Street

1931

Mr. John N. Greer, Principal

Originally Erected	1907
Number of Class Rooms	65
Number of Special Rooms	8
Enrollment	2268

WEST HIGH SCHOOL

A large high school building with original section of quick burning interior and later addition of fireproof construction. Building is considerably deficient in egress facilities, both from a standpoint of stairways and exit doors. Main hallways running east and west narrow and partially blocked by lockers.

DETAILED REPORT

OCCUPANCY: Boiler room, boys gymnasium and metalworking shop on basement floor. Lunch room and kitchen, building machinery, laboratories, domestic science, woodworking and ordinary class rooms first floor. Library, auditorium and stage, sewing and class rooms, second floor. Third and fourth floors devoted to ordinary class work.

CARE AND MAINTENANCE: Building in fair condition; maintenance is good.

EGRESS FACILITIES: Only four stairways from first to second floor produces a deficiency of 32%. Inadequate number of doors leading to the outside produces a deficiency of 45%. Stairways between other floors adequate in width. Deficiencies are alleviated to some extent by two well constructed outside metal fire escapes. Spiral fire escape of little value. A serious congestion would undoubtedly occur in the event of a severe fire in brick section.

COMMON HAZARDS: LIGHT -- Electric, rigid conduit wiring. Some non-standard wiring in electric laboratory. A few oversize fuses. HEAT -- Four high pressure steam boilers located in fireproof room basement, not properly cut off but well segregated from sections with combustible material. VENTILATION -- Metal ventilating ducts exhaust outside.

SPECIAL HAZARDS: Usual hazards found in metalworking, woodworking, painting, laboratories, domestic science and kitchen are present and are well protected. No blower system for refuse in woodwork-ing room. Considerable scenery in auditorium; stage section is pro- tected by automatic sprinklers. One electric iron in sewing room protected by standard pilot light.

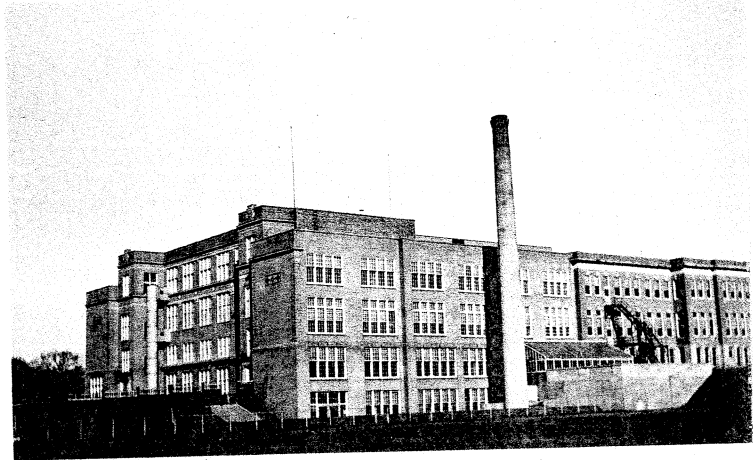
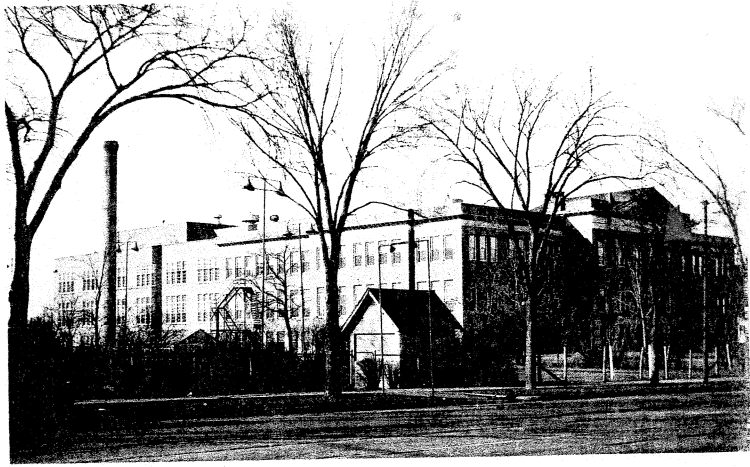
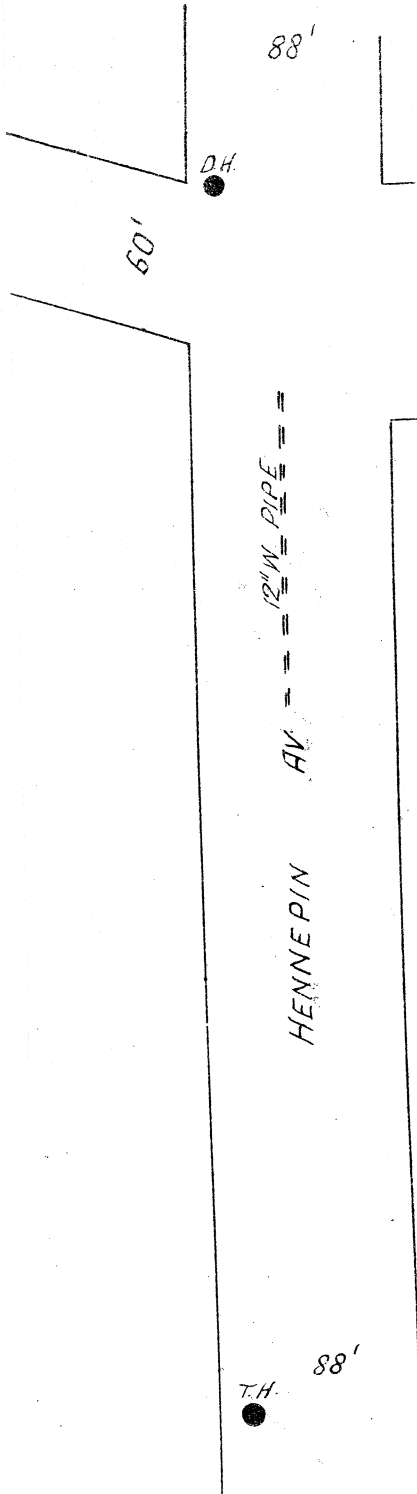
EXPOSURES: None.

FIRST AID PROTECTION: Distribution of approved fire extinguishers is inadequate. Fairly good protection afforded from four fire standpipes.

PUBLIC PROTECTION: Full municipal fire protection. Four surround- ing hydrants. Nearest fire alarm box two blocks. Fire station one mile distant, streets are paved.

RECOMMENDATIONS

1. Install automatic or self-closing device on fire door leading to boiler room.
2. Provide sufficient approved fire extinguishers.
3. Replace oversize fuses on branch lighting circuits with those of not over 15 ampere capacity.
4. Remove non-standard wiring in electric laboratory and replace with wiring in accordance with the National Electric code.
5. Protect opening to roof space of old section with hinged metal clad trap closing in a metal clad frame
6. Repair broken plaster.
7. Additional stairways should be provided between first and sec- ond floors or additional exits from second floor to outside.
8. Widen all doors to full width of corridor.



ERECTED: 1907, 1916.
CONDITION: Fair.
HEIGHT: Three and four stories.
AREA: Bsmt. 14,679 sq. ft., 1st 46,970 sq. ft.,
 2nd 51,783 sq. ft., 3rd 41,479 sq. ft.,
 4th 7,605 sq. ft.
WALLS: 12", 16" and 20" brick.
FLOORS: Ordinary wood joisted and reinf. conc.
 joist and tile.
ROOF: Ordinary wood joisted, gravel sur-
 faced on old section, new section has
 Gypsum slabs on unprotected steel
 members, suspended metal lath and
 plaster ceiling.
FLOOR OPENINGS: Two open stairways, bsmt. to 1st; four
 open stairways, 1st to 2nd; five from
 2nd to 3rd; two from 3rd to 4th.

HUMBOLDT AV. S.
 8" W. PIPE

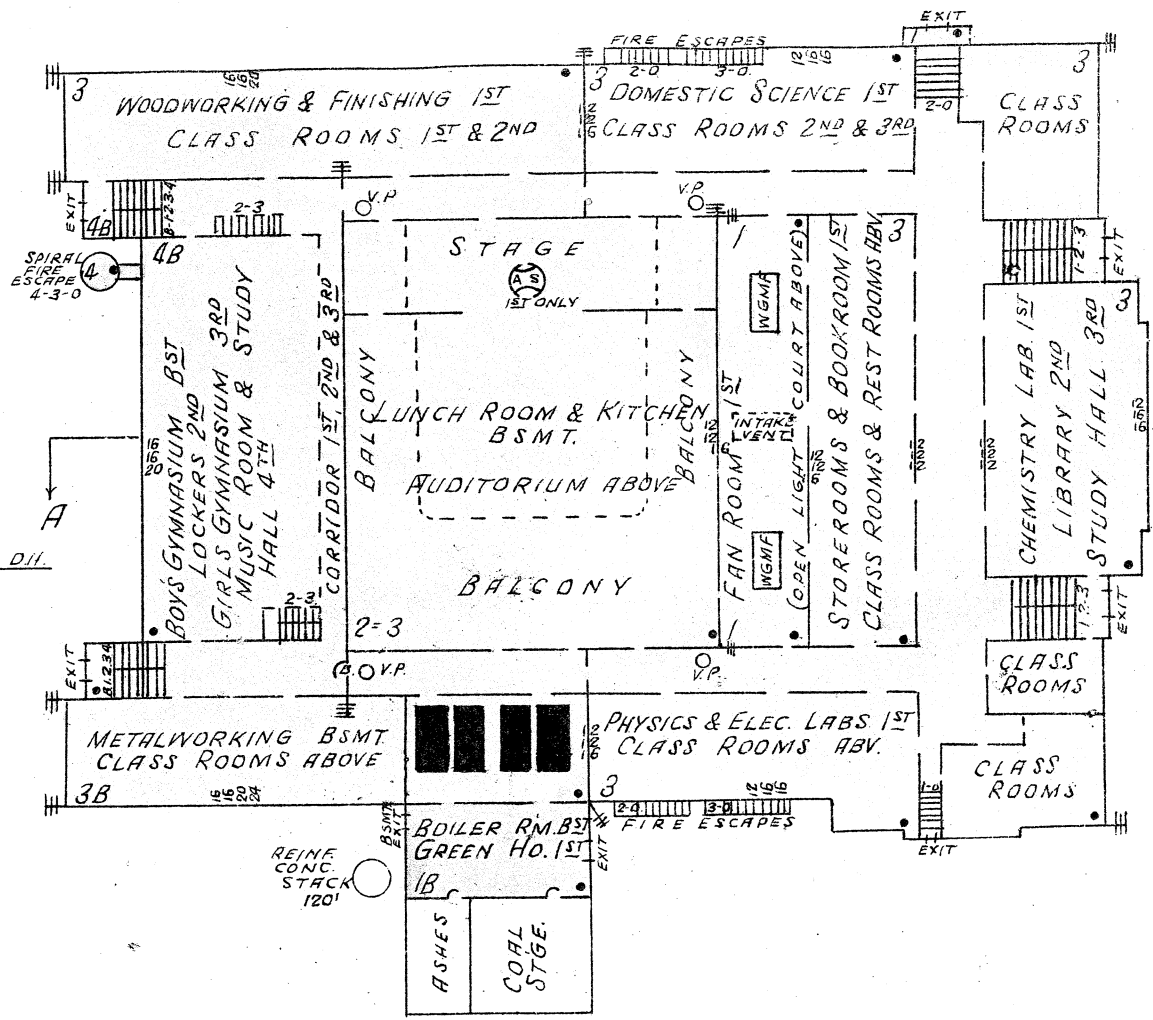
WEST HIGH SCHOOL

MINNEAPOLIS, MINNESOTA

SCALE: 1 IN. = 50 FT.

60'
 W. 28TH ST.

T.H.



← 225' TO DII

← 2 BLOCKS TO FIRE ALARM BOX

