

WASHINGTON SCHOOL  
8th Avenue S. and 6th Street

1931

Miss Ethel H. Keckefoth, Principal

Originally Erected	1888
Number of Class Rooms	12
Number of Special Rooms	0
Enrollment	415

## WASHINGTON SCHOOL

Building is of the older type, the interior being of quick burning wood construction.

### DETAILED REPORT

OCCUPANCY: This building contains no special features.

CARE AND MAINTENANCE: Building in fair repair and well maintained.

EGRESS FACILITIES: Fair from the second floor, there being two open wood stairways, both subject to damage by the same fire or smoke hazard but as well located as possible.

COMMON HAZARDS: LIGHT -- Electric lights with wiring in metal conduit. Some oversize fuses. HEAT -- Steam, boiler located in separate room in basement with two ply fire door, ceiling over boiler metal lath and plaster on wood joists. VENTILATION -- Metal ventilating flues are carried through roof.

SPECIAL HAZARDS: COOKING -- Small gas plate for teachers lunches and community kitchen, safe. PAINTING -- Small amount of brush work, paints stored in metal cabinet and wood closet.

EXPOSURES: On the west by a one story brick machine shop adjoining, both masonry walls are without openings.

FIRST AID PROTECTION: Inadequate installation of chemical extinguishers. Three extinguishers on first and second floors and two in the basement. Electric alarm.

PUBLIC PROTECTION: Full city protection; adequate hydrants nearby; station five blocks away over paved streets; fire alarm box one block.

### RECOMMENDATIONS

1. Install sufficient chemical fire extinguishers.
2. Provide hinge for trap into attic space.
3. Replace oversize fuses on branch lighting circuits with those of not over 10 ampere capacity.
4. All paints should be stored in metal cabinet.
5. Wood chairs should not be stored under stairs in basement.

# WASHINGTON SCHOOL

MINNEAPOLIS, MINNESOTA

SCALE: 1 IN. = 50 FT.

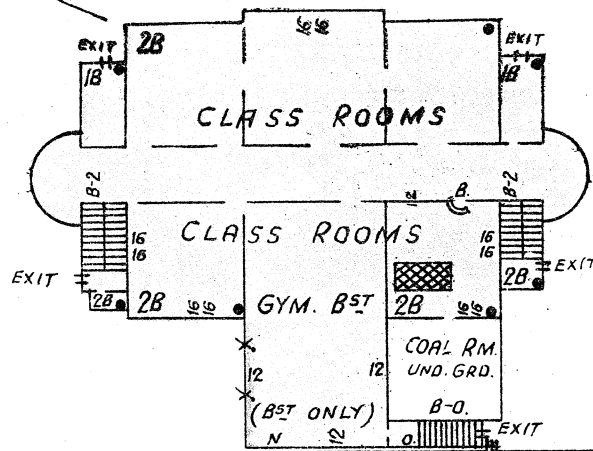
T.H.

12" W.P.

6TH ST. SOUTH

(FA) NEXT CORNER

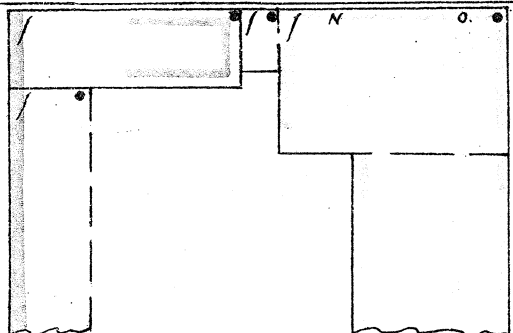
225' TO HYD.



8TH AVE. SOUTH

6" W.P.

325' TO HYD.



- ERECTED: 1898, 1910, 1927.
- CONDITION: Fair.
- HEIGHT: One and two stories.
- AREA:
  - Basement, 9,750 Sq. Ft.
  - First floor, 8,850 Sq. Ft.
  - Second floor, 7,850 Sq. Ft.
- WALLS: 16" brick.
- FLOORS: Ordinary wood.
- ROOF: Ordinary wood, composition surfaced.
- FLOOR OPENINGS: Two stairways, basement to second.

