

ROOSEVELT HIGH SCHOOL
28th Avenue S. and 40th Street

1931

Mr. Philip E. Carlson, Principal

Originally Erected	1922
Number of Class Rooms	59
Number of Special Rooms	15
Enrollment	2592

ROOSEVELT HIGH SCHOOL

This building is of fireproof construction with an ordinary wood joisted brick addition. The school is at present being used for both junior and senior high school purposes with conditions rather crowded. Present enrollment about 800 in excess of number for which building was originally designed.

DETAILED REPORT

OCCUPANCY: Boilers, fans, kitchen, lunch rooms, gymnasiums and storage in basement. Industrial classes, office, domestic science, auditorium and class rooms, first. Class rooms and laboratories, second. Class rooms, third.

CARE AND MAINTENANCE: Only fair. Some cracked and broken plaster, exit door in industrial section in need of repair.

EGRESS FACILITIES: Poor. A temporary condition which will be somewhat improved when school is relieved of its junior high grades, as it will be when new school now under construction is completed. Dead end corridors second and third. Under present conditions stairways are 44% deficient between first and second floors with a deficiency of 35% in doorway width.

COMMON HAZARDS: LIGHT -- Electric, installation safe. HEAT -- Steam boilers located in separate basement room, non-approved cut off. VENTILATION -- Metal ventilating ducts exhaust in attic.

SPECIAL HAZARDS: WOODWORKING -- Benches and power machines partly equipped with blower system removing debris to fireproof vault in boiler room, unapproved door on vault. PAINTING -- Regular, metal cabinet for paint stock. Cleanliness in wood shop and painting department rather poor. Metalworking, painting and electrical shop with usual hazards well safeguarded. Cooking in kitchen and domestic science rooms on safely arranged gas heated devices. One gallon benzine in chemical laboratory in unapproved container. Benzine in shops kept in one gallon approved receptacles.

EXPOSURES: None.

FIRST AID PROTECTION: Insufficient number of chemical extinguishers. Protection afforded by standpipe and hose fair. Automatic sprinklers protect stage only.

PUBLIC PROTECTION: Full municipal protection from well supplied hydrants and fire department located one mile away over part paved streets. Fire alarm 150 feet.

RECOMMENDATIONS

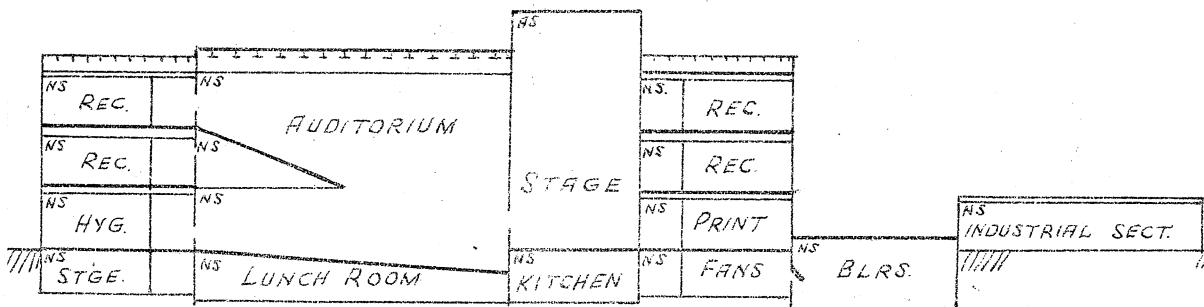
1. Chemical extinguisher equipment should be made standard.
2. Standpipe and hose equipment should be made standard.
3. Extend all ventilating ducts through roof.
4. Benzine in chemical laboratory should be kept in approved container.
5. Attention should be given to cleanliness in industrial building.
6. Shut off valve should be supplied to gas line serving lead melting device in battery room.
7. Under present overcrowded conditions two additional stairs should be provided to permit safe egress from second and third floors or enrollment be reduced to that for which building was originally built.
8. Widen all exits to full width of hall and provide additional exits in south side of passage to industrial building and in each end of industrial building.
9. Twisted portable light cord in pattern shop should be eliminated.
10. Approved door should be provided for shavings vault opening.

ROOSEVELT HIGH SCHOOL

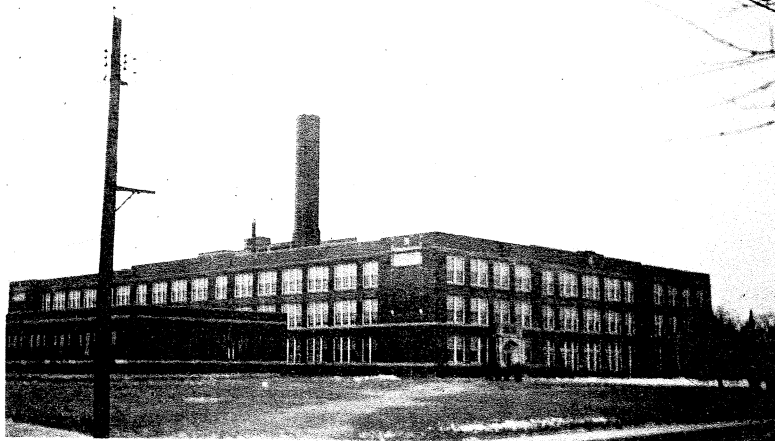
MINNEAPOLIS, MINNESOTA

SCALE: 1 IN. = 50 FT.

ERECTED: 1922.
CONDITION: Good.
HEIGHT: One and three stories.
AREA: Basement, 56,325 Sq. Ft., First, 67,550 Sq. Ft., Second and Third, 56,050 Sq. Ft.
WALLS: Hollow tile brick faced panels. Bearing in bk. sect.
FLOORS: Reinf. conc. and tile. Wood surfaced in class rooms.
ROOF: False wood capped, main sect. with un-protected steel in audit. roof. Ordinary wood joist industrial bldg. Tar and gravel surf. susp. M. L. & P. ceil. in audit.
FLOOR OPENINGS: Four open stairs, basement to third. One tile enclosed elevator basement to third. Metal, glass panel doors.



SECTION A-A.



EA

40TH ST. E.

28TH AV. S. 12" W.P.

