

PHILLIPS JUNIOR HIGH SCHOOL

12th Avenue S. and E. 22nd Street

1931

Mr. Clarence E. Blume, Principal

Originally Erected	1926
Number of Class Rooms	39
Number of Special Rooms	5
Enrollment	1468

PHILLIPS JUNIOR HIGH SCHOOL

This entire school is of fireproof construction.

DETAILED REPORT

OCCUPANCY: Basement; Boiler, transformer and fan rooms, lunch room, kitchen, small assembly, bicycle room and store rooms. First floor; offices, auditorium, printing, electric and tin shops, manual training, lockers, showers and class rooms. Second floor; motion picture booth, gymnasiums and class rooms. Third floor; sewing, domestic science and class rooms.

CARE AND MAINTENANCE: Building in good repair and well maintained.

EGRESS FACILITIES: Good. Open stairways but well located. Auditorium on first floor, seating capacity 1050, has ample exit facilities.

COMMON HAZARDS: LIGHT -- Electric lights with wiring in metal conduit. HEAT -- Low pressure steam boilers in fireproof addition, non-standard fire doors into main building. VENTILATION -- Metal ventilating flues are carried through roof.

SPECIAL HAZARDS: Gas stoves used in connection with domestic science and the main kitchen. The hazards connected with sewing, electric and tin shops and painting are well safeguarded. No blower system in connection with woodworking machines in manual training. Refuse is swept through opening in floor into fireproof room in basement. Manual training department kept clean and orderly, approved motion picture machine in standard booth.

EXPOSURES: None.

FIRST AID PROTECTION: Standard installation of standpipe and hose equipment. Inadequate supply of approved and unapproved chemical fire extinguishers, there being two extinguishers in the basement, seven on first, five on second and three on third floors. Electric alarms.

PUBLIC PROTECTION: Full city protection; adequate number of well supplied hydrants nearby; five blocks to fire station over part paved streets; fire alarm box 300 feet.

RECOMMENDATIONS.

1. Install sufficient chemical fire extinguishers.
2. Construct standard transformer vault.
3. Provide conspicuous exit signs at foot of center stairs on first floor.

ERECTED: 1926, 1930.

CONDITION: Excellent.

HEIGHT

AREA

One, two and three stories.
Basement, 28,700 Sq. Ft., 1st floor,
51,350 Sq. Ft., 2nd floor, 32,600 Sq.
Ft., 3rd floor, 26,700 Sq. Ft.

WALLS:

FLOORS:

ROOF:

8" H. T. with 4" brick facing.

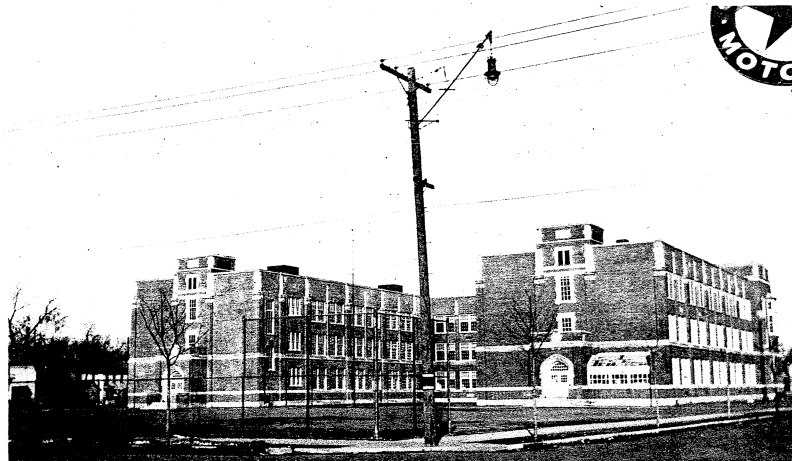
Concrete and tile.

Wood over concrete. Over Auditor-
ium roof is 3" gypsum slab with sus-
pended metal lath and plaster ceiling.

FLOOR

OPENINGS:

Enclosed elevator, paper chute and
dumb waiter, basement to third, three
open stairways basement to 1st, four
open stairways 1st to third and two
enclosed stairways 1st to 2nd.



HYD. ACROSS STREET

EAST 22ND ST. 6" W.P.

PHILLIPS JR. HIGH SCHOOL

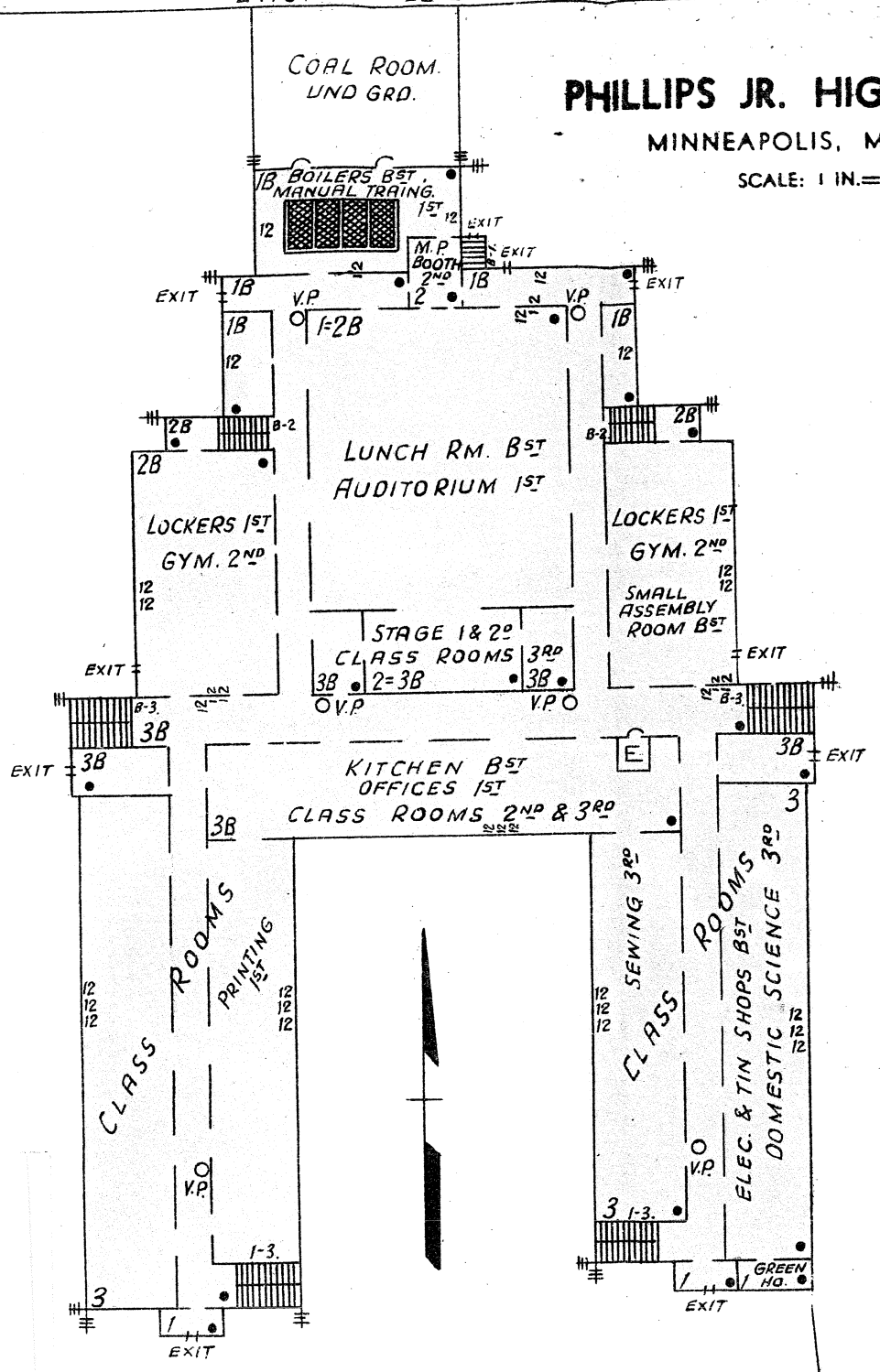
MINNEAPOLIS, MINNESOTA

SCALE: 1 IN. = 50 FT.

12TH AVE. SO.

13TH AVE. SO. 6" W.P.

100' TO HYD.



300' TO FIRE ALARM & HYD.

300' TO HYDRANT