

PAGE SCHOOL

Luverne and 3rd Avenues S.

1931

Miss Benita R. Blood, Principal

Originally Erected	1925
Number of Class Rooms	8
Number of Special Rooms	0
Enrollment	300

## PAGE SCHOOL

This is one of the typical portables of quick burning wood construction.

### DETAILED REPORT

OCCUPANCY: This building contains no special features.

CARE AND MAINTENANCE: Building in good repair and well maintained.

EGRESS FACILITIES: In addition to the two hallway exits there are direct exits from each room to outside. Vestibule doors not free swinging and outer doors not equipped with panic bars. The exit from the room near the heating plant is partially blocked by a locker and wood shelves.

COMMON HAZARDS: LIGHT: Electric lights with wiring in metal conduit. HEAT -- Hot water boilers located in metal lined frame addition, coal fuel. Coal water heater in boiler room. VENTILATION -- Windows.

SPECIAL HAZARDS: COOKING -- Electric plate in boiler room for coffee making, safe. PAINTING -- Small amount of brush work, paints in wood box.

EXPOSURES: None.

FIRST AID PROTECTION: Inadequate supply of fire extinguishers, there being eight one quart extinguishers. Bell alarm.

PUBLIC PROTECTION: Full city protection; adequate fire hydrants nearby; station within one mile over part paved streets; fire alarm box on next corner.

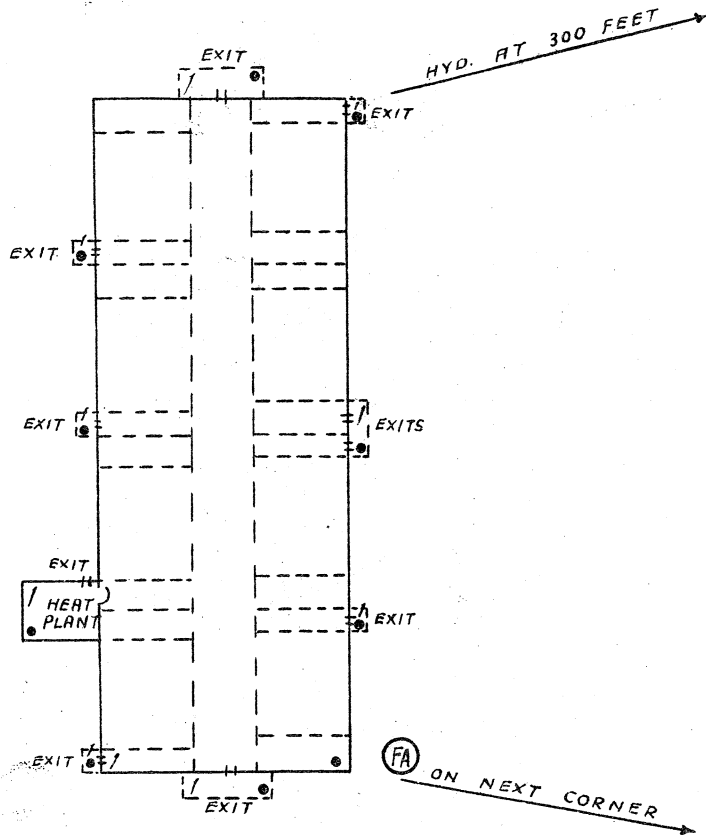
### RECOMMENDATIONS

1. Install sufficient chemical fire extinguishers.
2. Provide metal cabinet for all paints.
3. Make vestibule doors free swinging.
4. Install panic bars on outer doors.
5. Remove locker and shelves from vestibule near boiler room.
6. Remove dividing posts from main exits.

# PAGE SCHOOL

MINNEAPOLIS, MINNESOTA

SCALE: 1 IN. = 50 FT.



L U V E R N E      A V E.

12" W.P.

D.H.

3<sup>RD</sup> AVE. SO

**ERECTED:** 1925.  
**CONDITION:** Good.  
**HEIGHT:** One story.  
**AREA:** 11,440 Sq. Ft.  
**WALLS:** Ordinary wood.  
**FLOOR:** " " "  
**ROOF:** Ordinary wood joisted, composition surfaced.

