

NORTH HIGH SCHOOL
1715 Fremont Avenue N.

1931

Mr. W. W. Habbs, Principal

Originally Erected	1914
Number of Class Rooms	51
Number of Special Rooms	8
Enrollment	2803

NORTH HIGH SCHOOL

A one, two and three story fireproof building with part false wood roof. Building overcrowded and insufficient exit facilities provided.

DETAILED REPORT

OCCUPANCY: Manual training, boiler room, boys gymnasium, chemistry room, biology rooms, kitchen and lunch room, basement. Office, woodworking, domestic science, auditorium and class rooms, first. Girls gymnasium, library and class rooms, second, sewing room, art rooms, and class rooms, third.

CARE AND MAINTENANCE: Building in good repair, premises neat.

EGRESS FACILITIES: Poor, due to overcrowding, not sufficient stairways or exits, halls partially blocked by lockers on second and third floors and loose chairs around lunch room in basement.

COMMON HAZARDS: LIGHT -- All electric wiring in rigid conduit.

HEAT -- Steam from high pressure boilers in fireproof basement room not cut off. VENTILATION -- All ducts carried through roof.

SPECIAL HAZARDS: WOODWORKING -- Twenty eight small machines in addition to benches, refuse cleaned up after each class, removed daily and burned. Machine shop, seventeen machines on wood surfaced floor no protection. Blacksmith shop, two coal forges, automobile repairing shop, hand work only. Painting, small amount of brush work, all paints kept in a good metal cabinet, self-closing can for paint rags.

EXPOSURES: None.

FIRST AID PROTECTION: A deficient number of chemical extinguishers and one 2 inch standpipe with 100 feet of 1½ inch hose on stage.

PUBLIC PROTECTION: Good public protection, three triple and one double hydrants conveniently located, three fire departments within one mile, paved streets intervening.

RECOMMENDATIONS

1. Install an approved firewall door on opening to boiler room.
2. Install a sufficient number of approved 2½ gallon chemical extinguishers.
3. Protect openings to roof space with doors approved for this purpose.
4. Provide at least three additional exits having a minimum total width of 270 inches, one on each of north wings and one from corridor on north side of auditorium.
5. Install a metal container for storage of celluloid in art room.
6. Remove all combustible material from roof space over auditorium.
7. Unlock all exits from chemistry room, basement and library on second floor and remove obstructions to these exits.
8. Remove lockers from center of corridors and discontinue placing chairs in corridors around lunch room.

NORTH HIGH SCHOOL

MINNEAPOLIS, MINNESOTA

SCALE: 1 IN.=50 FT.

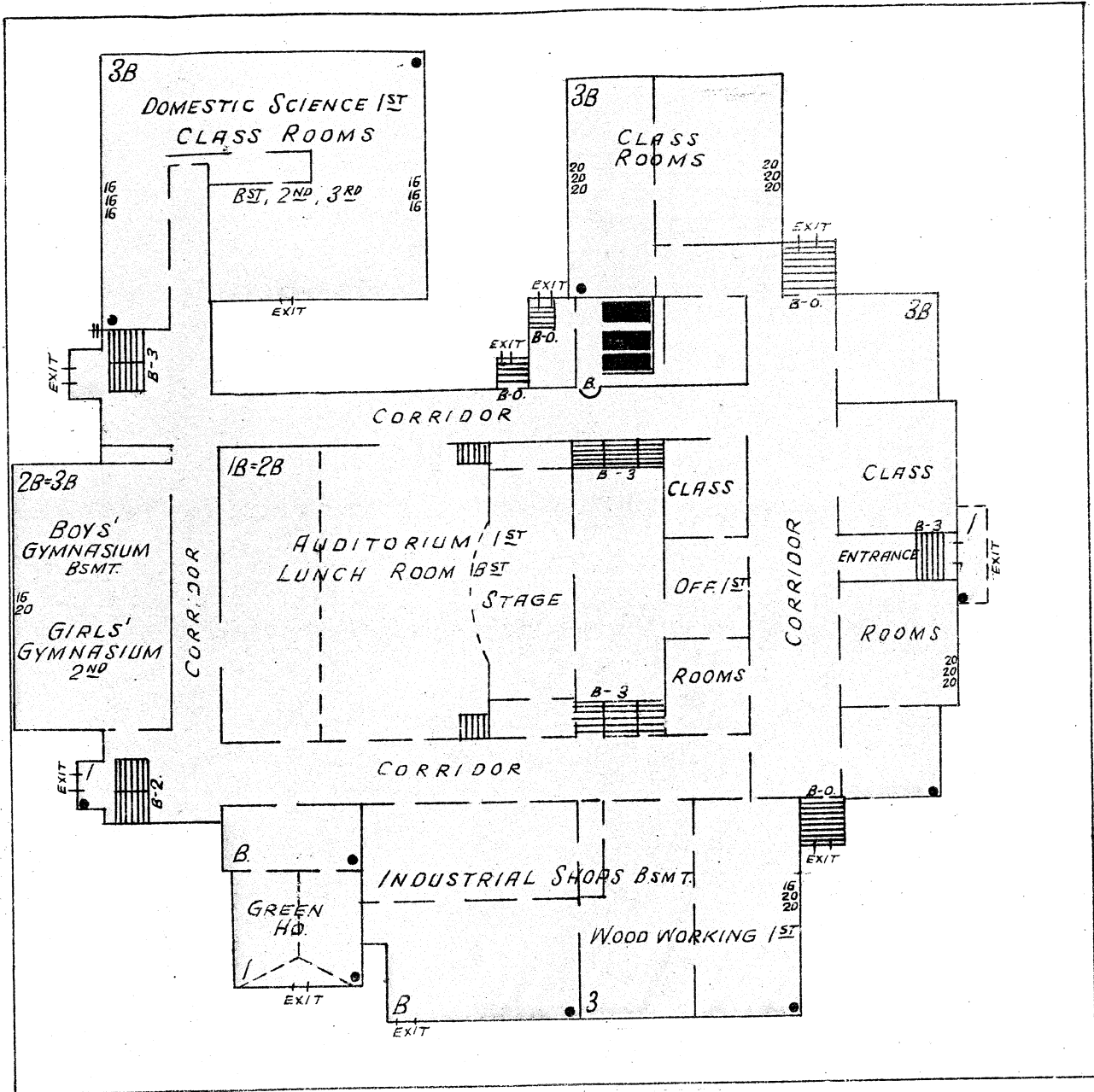
D.H.

ERECTED: 1914-1924.
CONDITION Good.
HEIGHT One two and three stories.
AREA 57,765 sq. ft. bst.; 52,015 sq. ft. 1st.
40,390 sq. ft. 2nd; 33,970 sq. ft. 3rd.
WALLS: 20" and 16" brick and hollow tile.
ROOF Part tile and conc. slab on unprotected metal, part false wood roof on wood supports resting on conc. slab and part falsewood roof on unprotected metal resting on concrete and tile slab over audt. sect.
FLOOR OPENINGS: Seven open and two enclosed stairways bst. to 1st.
Five open stairways 1st to 2nd.
Four open stairways 2nd to 3rd.



T.H.

16" W.P. 5" W.P. 18TH AV. N. 6" W.P. T.H.



GIRARD AV. N.

1715

FREMONT AV. N.

16" W.P. 5" W.P. 17TH AV. N. 6" W.P. T.H.

