

MARCY SCHOOL

7th Street and 11th Avenue S. E.

1931

Miss Katherine G. Young, Principal

Originally Erected	1908
Number of Class Rooms	12
Number of Special Rooms	0
Enrollment	425

MARCY SCHOOL

An ordinary brick structure of entirely quick burning interior construction. Open stairways and only a single means of egress from basement auditorium present a serious life hazard.

DETAILED REPORT

OCCUPANCY: This building contains no special hazards.

CARE AND MAINTENANCE: Building in good repair and well maintained.

EGRESS FACILITIES: Two open stairways of wood construction, both subject to blocking from the same fire, form the only means of egress from the second floor. From the basement auditorium where all pupils assemble occasionally there is only a single road to safety which could easily be blocked. Safeguarding the lives of children in this school is essential.

COMMON HAZARDS: LIGHT -- Electric, with standard rigid conduit installation. Some oversize fuses. HEAT -- Steam boilers are located in non-fireproof basement with tile ceiling on metal tees supported from wood first floor; non-standard doors on openings to boiler room. VENTILATION -- Metal ventilating flues exhaust through roof.

SPECIAL HAZARDS: Gas stove with portable oven in community kitchen safely arranged.

EXPOSURES: Negligible dwelling property only.

FIRST AID PROTECTION: One 2½ gallon and two 1 quart extinguishers on each floor, approved type; inadequate.

PUBLIC PROTECTION: Full city protection; four well supplied triple hydrants available; three fire stations within one mile over paved streets; 300 feet to fire alarm box.

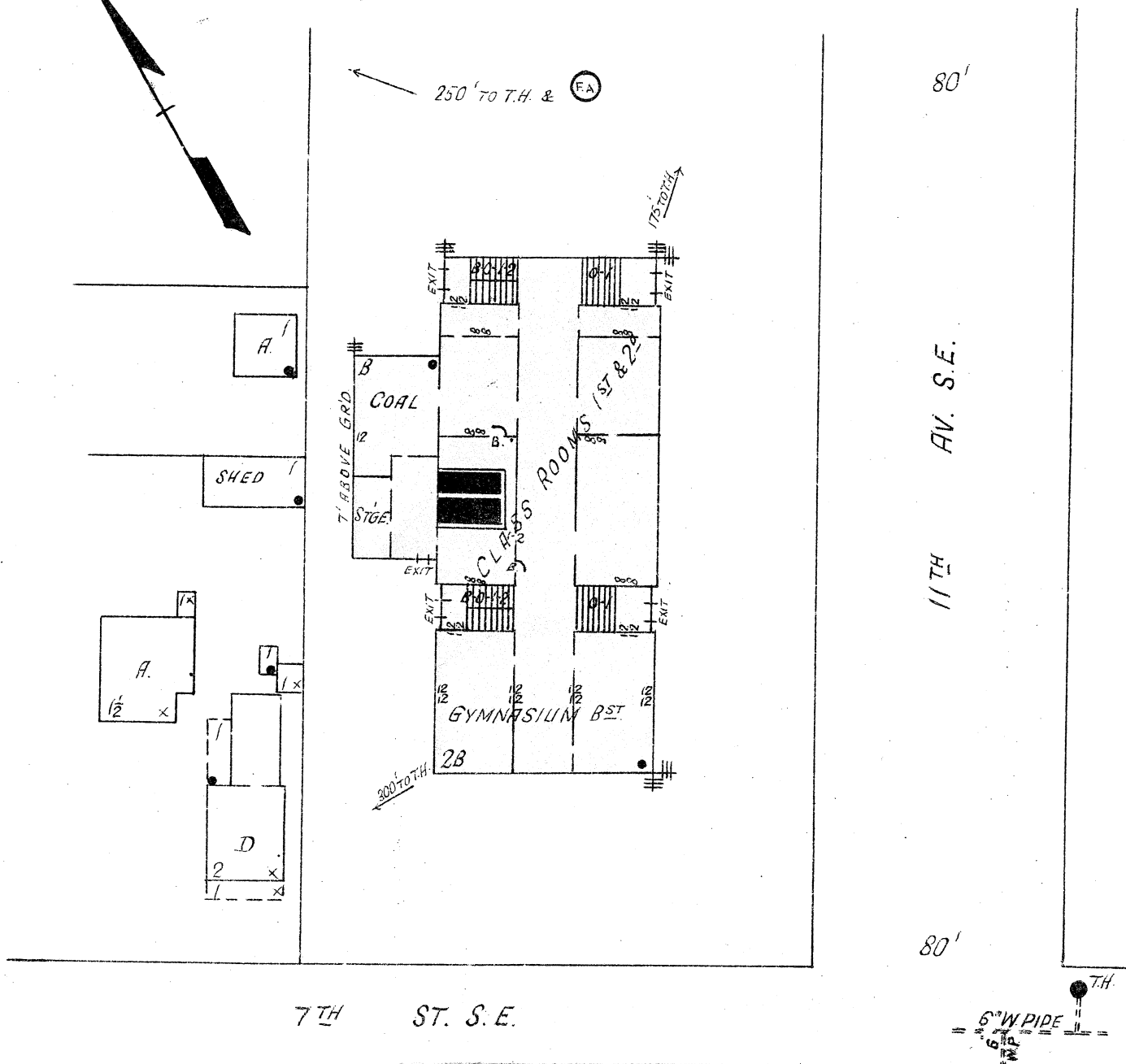
RECOMMENDATIONS

1. Install sufficient chemical fire extinguishers.
2. Replace wood joisted floor over boiler room with floor of fireproof construction and equip all openings to boiler room with approved automatic fire doors.
3. Replace oversize fuses on branch lighting circuits with those of 10 ampere capacity.
4. Provide two exits leading direct to outside from auditorium, each exit to have a minimum width of 75 inches and be placed at opposite ends of the room.
5. Provide additional safe exit from second floor at south end, preferably a smoke proof tower.

MARCY SCHOOL

MINNEAPOLIS, MINNESOTA

SCALE: 1 IN. = 50 FT.



ERECTED	1908.
CONDITION	Good.
HEIGHT	One and two stories.
AREA	Bsmt., 12,750 Sq. Ft. 1st & 2nd Floors, 11,200 Sq. Ft. Each.
WALLS	12" brick.
FLOORS	Ordinary wood joisted.
ROOF	Ordinary wood joisted with composition surfacing.
FLOORS OPENINGS	Two open stairways, basement to second.

