

LOWRY SCHOOL

29th Avenue and Lincoln Street N.E.

1931

Miss Anna S. Sand, Principal

Originally erected	1915
Number of Class Rooms	16
Number of Special Rooms	3
Enrollment	843

## LOWRY SCHOOL

The main building of this group is fireproof construction throughout with the exception of a wood roof over the entire top floor. Portable is the usual type of frame construction.

### DETAILED REPORT

OCCUPANCY: Manual training, domestic arts and domestic science rooms are all located on the first floor; remainder of building contains only ordinary class rooms.

CARE AND MAINTENANCE: Buildings in good condition and well maintained.

EGRESS FACILITIES: Considered good. Open stairways located at each end of building.

COMMON HAZARDS: LIGHT -- Electric, with standard rigid conduit installation. HEAT -- Two brick set steam boilers in battery in fireproof room cut off by good non-automatic fire door. VENTILATION -- Metal ventilating flues pass through roof.

SPECIAL HAZARDS: Manual training hazards of woodworking and painting well safeguarded. All heat appliances in domestic arts and science rooms properly safeguarded.

FIRST AID PROTECTION: Two one-quart tetrachloride extinguishers are provided on each floor of the main building and in the portable and one 2½ gallon soda acid and one 5 gallon pump type extinguishers located on first floor of main building.

PUBLIC PROTECTION: Good at this location. Four well supplied double hydrants available within 350 feet. Three blocks to fire station over paved and graded streets. One block to fire alarm box.

### RECOMMENDATIONS

1. Provide standard chemical installation.
2. Provide automatic closing standard fire door on opening to boiler room.
3. Make interior vestibule doors to exits free swinging in portable.
4. Provide metal covered and hinged trap on opening to roof space.

# LOWRY SCHOOL

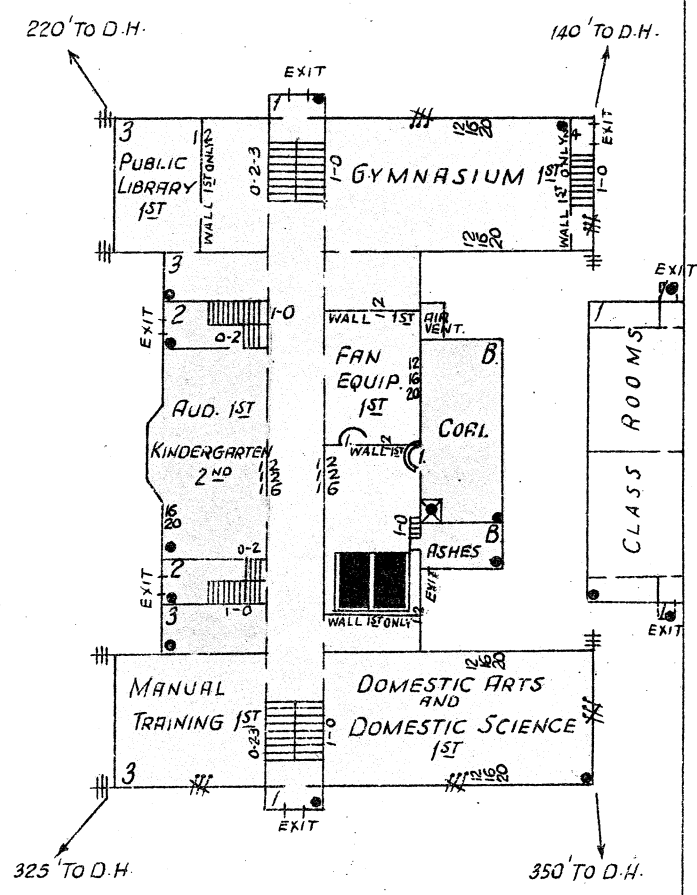
MINNEAPOLIS, MINNESOTA

SCALE: 1 IN. = 50 FT.

BUCHANAN ST. N.E. (NOT CUT THROUGH)

1 BLOCK TO (F.A.)

6" W. PIPE  
LINCOLN ST. N.E.



## MAIN BUILDING

<b>ERECTED</b>	Brick 1915
<b>CONDITION</b>	Good
<b>HEIGHT</b>	One, two and three stories
<b>AREA</b>	First, 17,420 Sq. Ft., second 16,100 Sq. Ft., third 13,650 Sq. Ft.
<b>WALLS</b>	20", 16" and 12" brick
<b>FLOORS</b>	Reinforced concrete joist and tile
<b>ROOF</b>	Reinforced concrete joist and tile over basement, kindergarten and west exits, ordinary wood joisted over third floor
<b>FLOOR OPENINGS</b>	Four open stairways from first to second floor and two open stairways from second to third floor
<b>ERECTED</b>	1927
	Ordinary frame composition roofed structure

