

LOWELL SCHOOL

1910 Willow Avenue N.

1931

Miss Jessie E. Fawcett, Principal

Originally Erected	1893
Number of Class Rooms	18
Number of Special Rooms	0
Enrollment	756

LOWELL SCHOOL

A two story, brick structure with wood floors and roof with a two story addition, first and second floors fireproof and suspended metal lath and plaster ceiling hanging from wood roof joists.

DETAILED REPORT

OCCUPANCY: Boiler engine and fan room, teachers lunch, nurses and music rooms, basement. Office, book room and class rooms, first. Class rooms, second.

CARE AND MAINTENANCE: Building in fair repair, premises neat.

EGRESS FACILITIES: Fair, two wood stairways in old section of building open type, one fireproof stairway in new section.

COMMON HAZARDS: LIGHT -- Electric, wiring in rigid conduit. HEAT -- Steam from two high pressure boilers in fireproof room in basement not cut off. VENTILATION -- All metal ducts carried through roof.

SPECIAL HAZARDS: None.

EXPOSURES: Light from small dwellings and out buildings.

FIRST AID PROTECTION: None except a deficient number of chemical fire extinguishers.

PUBLIC PROTECTION: Good public protection afforded by four triple hydrants conveniently located and two fire departments within one mile, paved and unpaved streets intervening.

RECOMMENDATIONS

1. Install approved fire wall doors on openings to boiler room.
2. Install a sufficient number of approved 2½ gallon chemical fire extinguishers.
3. Install a safe means of exit from old section of building, preferably a smokeproof stair tower.
4. Replace wood stairways with those of fireproof construction.
5. Discontinue storage rooms under wood stairways and remove or build up portions solidly.
6. Discontinue the partial blocking of corridor with storage of loose chairs.

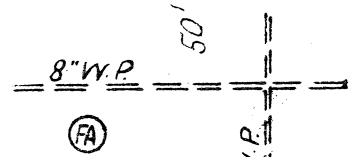
T.H.

LOWELL SCHOOL

MINNEAPOLIS, MINNESOTA

SCALE: 1 IN. = 50 FT.

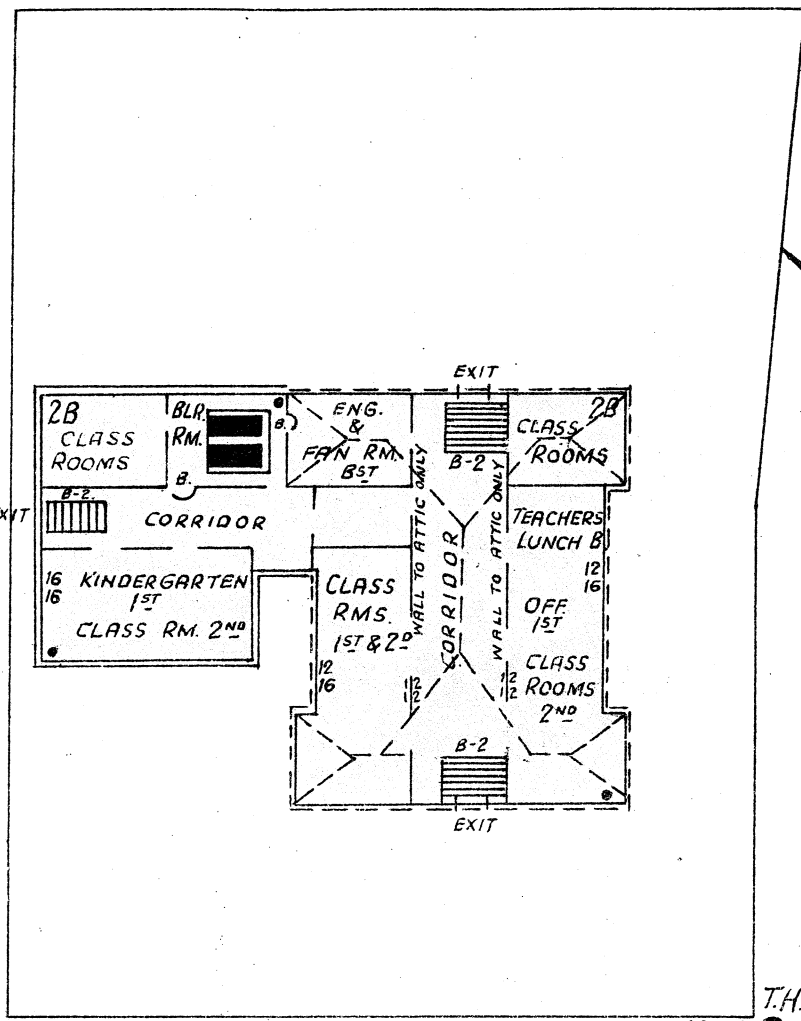
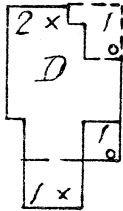
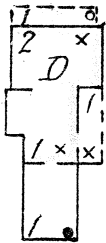
HILLSIDE AVE.



T.H.

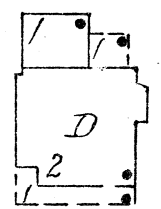
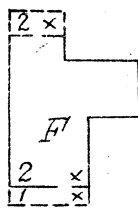
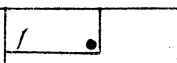
1925

1923



T.H.

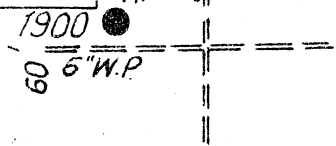
LOGAN AVE. N.



2002

1922

WILLOW AVE. N.



T.H.

8" W.P.

- ERECTED: 1893, 1912.
- CONDITION: Fair.
- HEIGHT: Two stories.
- AREA: Basement, first and second, 13,000 Sq. Ft.
- FLOORS: Ordinary wood floors in old section. Tile, concrete, first and second, in new addition.
- ROOF: Composition roofing on 7/8" boards supported on wood joists.
- FLOOR OPENINGS: Three open stairways, basement to second.

