

LORING SCHOOL

44th and Thomas Avenues North

1931

Miss Ruth Jones, Principal  
Miss Margaret Libert, Acting Principal

Originally Erected	1928
Number of Class Rooms	18
Number of Special Rooms	0
Enrollment	400

## LORING SCHOOL

A two story structure with reinforced concrete floors and ceilings and false wood roof.

### DETAILED REPORT

OCCUPANCY: Boiler room, transformer room, battery and generator rooms, basement. Office, class rooms, community kitchen and teachers lunch and rest room and gymnasium auditorium, first floor. Class rooms, second floor.

CARE AND MAINTENANCE: Excellent.

EGRESS FACILITIES: Good, four stairways first to second in hallway.

COMMON HAZARDS: LIGHT -- Electric, wiring in rigid conduit, in good condition. HEAT -- Steam from two low pressure boilers in fireproof room in basement, non-standard cut off. VENTILATION -- Metal ducts carried through roof.

SPECIAL HAZARDS: None.

EXPOSURES: None.

FIRST AID PROTECTION: None except a deficient number of chemical fire extinguishers.

PUBLIC PROTECTION: Fair public protection, three double hydrants conveniently located on 6 inch and 8 inch water mains and one fire department one and one-half miles, paved and unpaved streets inter-vening.

### RECOMMENDATIONS

1. Replace door to boiler room by an approved three ply firewall door.
2. Install sufficient number of approved 2½ gallon chemical fire extinguishers.

# LORING SCHOOL

MINNEAPOLIS, MINNESOTA

SCALE: 1 IN.=50 FT.

THOMAS AVE. N.

SHERIDAN AVE. N.

60'

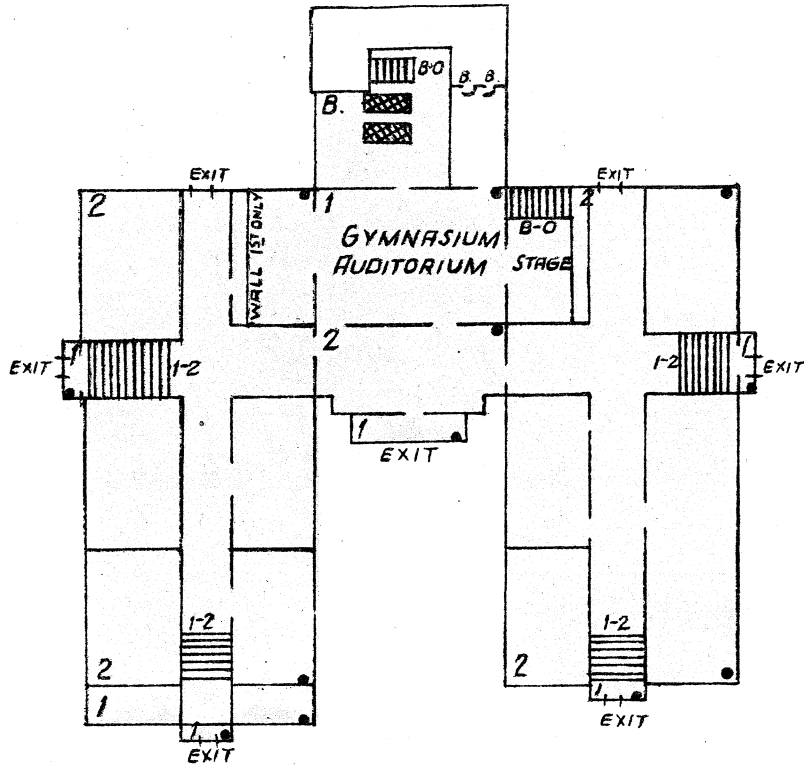
60'

44<sup>TH</sup> AVE. N.

D.H. 6" W.P. THOMAS AVE.

D.H. 6" W.P.

8" W.P.



**ERECTED** 1928  
**CONDITION** Excellent.  
**HEIGHT** Two stories.  
**AREA** 4,000 Sq. Ft. Bst., 18,550 Sq. Ft. 1st, 15,450 Sq. Ft. 2nd  
 8" Ht., 4" B. faced.  
**WALLS** Reinforced concrete.  
**FLOORS** Composition surface on 7/8" boards, supported on wood joists on wood supports on concrete slab.  
**ROOF**  
**FLOOR OPENINGS:** One Bst.-1st, enclosed tile partition, 2 Plu. S. C. door. Four 1st-2nd open in hallway.

