

LONGFELLOW SCHOOL

30th Avenue S. and 31st Street E.

1931

Miss Helen B. Shove, Principal

Originally Erected	1918
Number of Class Rooms	24
Number of Special Rooms	2
Enrollment	905

LONGFELLOW SCHOOL

This building is of ordinary wood joisted brick construction and of a type designed for quick removal of children by means of separate exits from each class room.

DETAILED REPORT

OCCUPANCY: Boiler room and fan rooms in basement. Office, teachers lunch room and class rooms, first.

CARE AND MAINTENANCE: Good.

EGRESS FACILITIES: Excellent from class rooms which are provided with separate exits. No panic bars on auditorium exit doors.

COMMON HAZARDS: LIGHT -- Electric, all wiring in rigid conduit, well installed. HEAT -- Steam from two coal fired low pressure boilers in fireproof basement room not cut off. VENTILATION -- Metal ventilating ducts extend through roof.

SPECIAL HAZARDS: Small amount of hand woodworking, painting and rattan weaving in special room. Room cleaned daily and provided with metal cabinet for paint stock. Gas plate in special room and electric plates in teachers lunch room, safely arranged.

EXPOSURES: None.

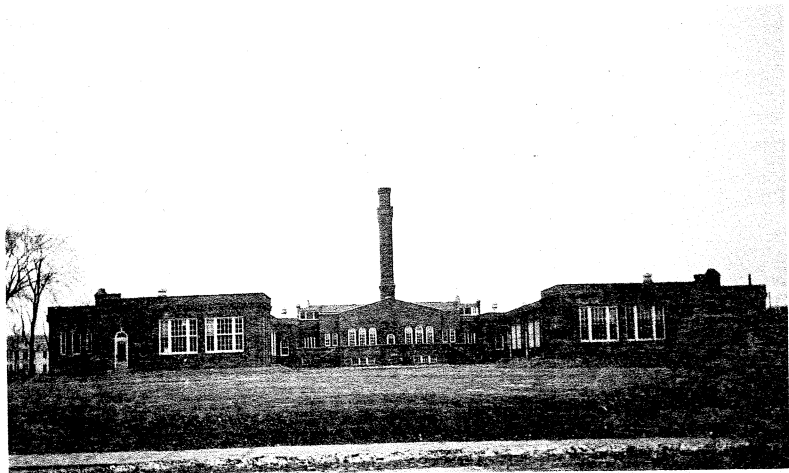
FIRST AID PROTECTION: Inadequate supply of chemical extinguishers afford poor protection.

PUBLIC PROTECTION: Four double head hydrants on 6 inch mains available within 300 feet. Fire department located on mostly paved streets, six blocks away. No fire alarm within useful distance.

RECOMMENDATIONS

1. Chemical extinguisher equipment should be made standard.
2. Approved three ply fire door should be provided for opening to boiler room.
3. Panic bars should be supplied to auditorium exit doors.
4. Opening to roof space should be protected with metal covered trap door.

ERECTED 1918.
CONDITION Good.
HEIGHT One story.
AREA Bsmt., 4,850 sq. ft.; 1st, 40,300 sq. ft.
WALLS Brick, 16 and 12 in.
FLOOR Wood joist.
ROOF Wood joist, composition and tile surfaced.
FLOOR OPENINGS One tile enclosed stair to basement; wood door.



LONGFELLOW SCHOOL

MINNEAPOLIS, MINNESOTA

SCALE: 1 IN. = 50 FT.

31 ST ST. E.

30 TH AV. S. 6" W.P.

8" W.P. 31 ST AV. S.

