

JEFFERSON JUNIOR HIGH SCHOOL

Fremont Avenue S. and W. 26th Street

1931

Mr. Noble B. Schoonmaker, Principal

Originally Erected	1923
Number of Class Rooms	43
Number of Special Rooms	10
Enrollment	1313

JEFFERSON JUNIOR HIGH SCHOOL

A large three story fireproof building of modern construction. Egress facilities are slightly inadequate for present enrollment.

DETAILED REPORT

OCCUPANCY: Lunch room for students and teachers, kitchen, small laundry, boys gymnasium, engine room and boiler room and bicycle room located in basement. Domestic science, electric shop, metal-working, woodworking and painting, printing, auditorium and ordinary class rooms on first floor. Science room, girls gymnasium and class rooms second floor. Third floor is devoted to ordinary class work.

CARE AND MAINTENANCE: Good throughout. Building comparatively new.

EGRESS FACILITIES: Four open stairways well distributed, provide egress from basement and upper floors to first floor. Class rooms are so distributed that at present 1200 students are located on the second and third floors. The stairways provided are not adequate to accommodate this number and any increase in enrollment, such as is contemplated within the next year, would only serve to augment this deficiency. Means of egress from basement floor are good.

COMMON HAZARDS: LIGHT -- Electric lights, wired in rigid metal conduit. HEAT -- Four low pressure steam boilers located in fireproof room not properly cut off but well segregated from sections with combustible material. VENTILATION -- Metal ventilating ducts exhaust into a partly combustible foul air chamber in roof space.

SPECIAL HAZARDS: Cooking, basement, in lunch room kitchen on gas range and oven, safely arranged. Hazards in small laundry room, basement, domestic science room, first and industrial shops on first are well safeguarded.

EXPOSURES: None.

FIRST AID PROTECTION: Building is fairly well protected with fire standpipes and hose. Chemical fire extinguishers distributed in insufficient quantities.

PUBLIC PROTECTION: Good at this location. Two hydrants at nearby corners and three additional within 450 feet. Fire alarm box two blocks. Nearest fire station one mile distant over paved streets.

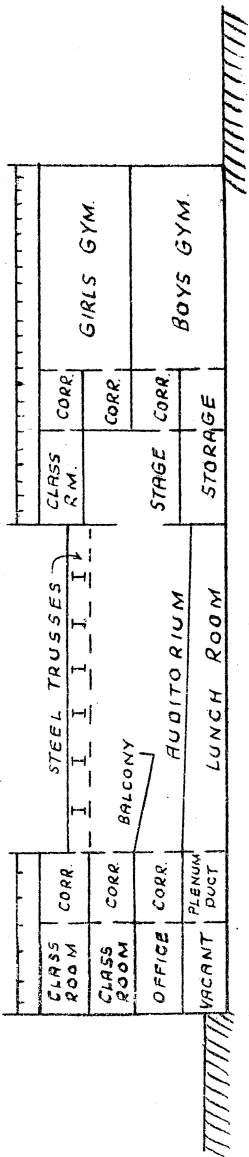
RECOMMENDATIONS

1. Protect opening to roof space of main building with an approved automatic closing trap door.
2. Remove gasoline blow torch, used in electric shop, from building.
3. Provide a standard transformer vault.
4. Distribute a sufficient number of approved fire extinguishers.
5. Entirely line plenum chamber or foul air chamber in roof space of main building with a continuous metal duct.

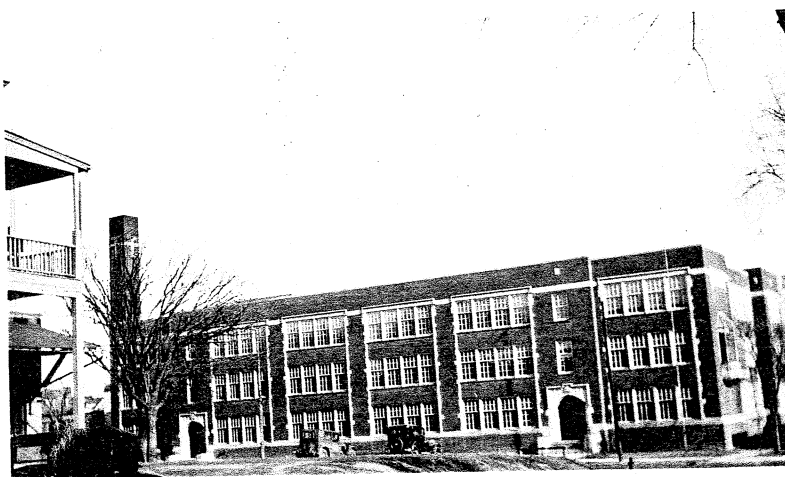
JEFFERSON JR. HIGH SCHOOL

MINNEAPOLIS, MINNESOTA

SCALE: 1 IN.=50 FT.



ERECTED 1924.
CONDITION Excellent.
HEIGHT Two and three stories.
AREA Bsmt., 50,710 sq. ft.; 1st, 2nd and 3rd, 44,940 sq. ft.
WALLS 12 in. brick panel and curtain walls.
FLOORS Reinforced concrete.
ROOF Reinforced concrete joist and tile over boiler room and coal bin; pre-cast concrete slabs on unprotected steel trusses over auditorium; remainder of building has false wood roof with reinforced concrete ceiling beneath.
FLOOR OPENINGS Four open stairways basement to 1st to 2nd to 3rd floors.

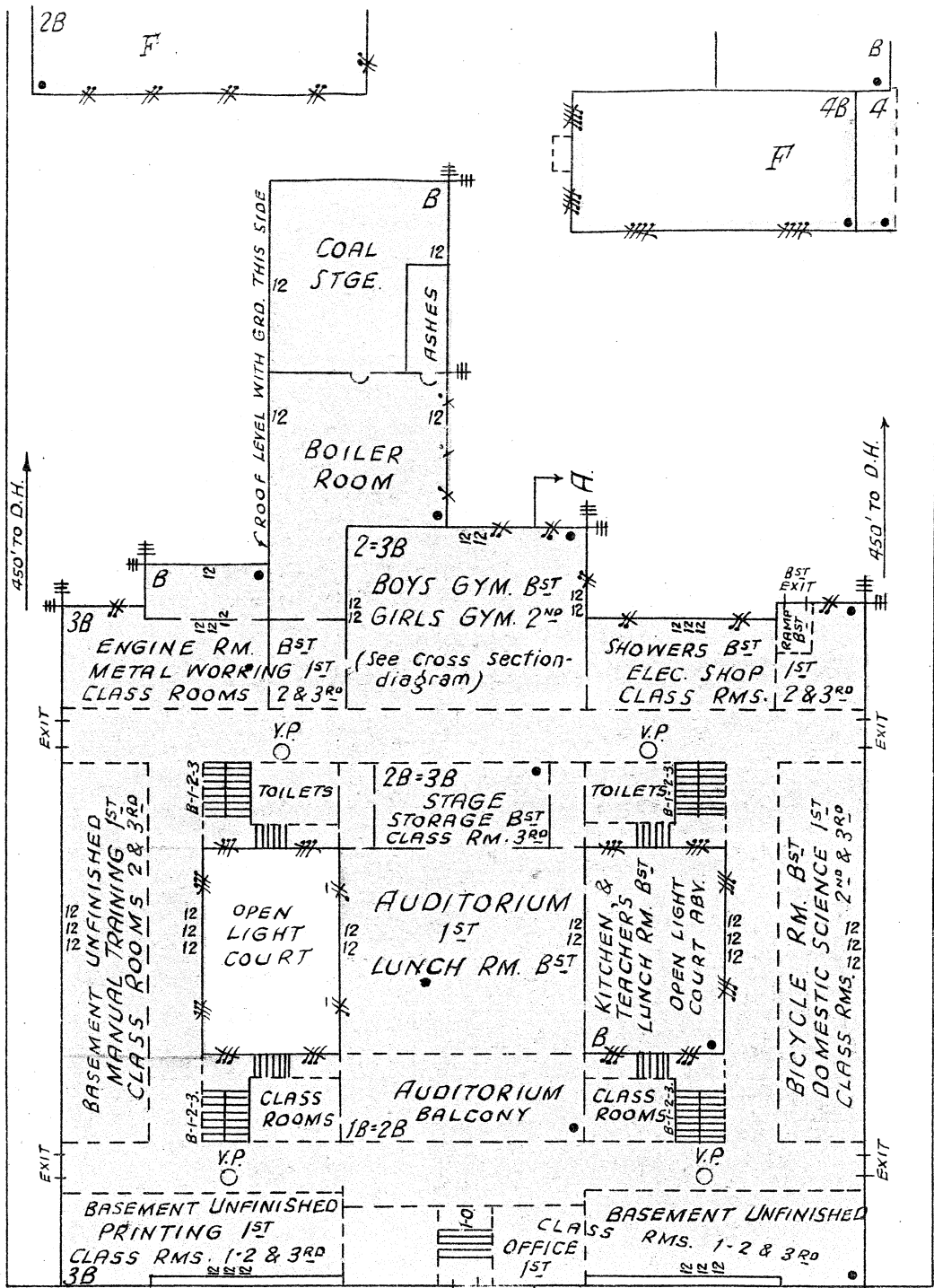


60'

60'

FREMONT AVE. S.

EMERSON AVE. S.



T.H.

6" W. PIPE = 60'

W. 26TH ST.

6" W. PIPE = 66'

D.H.

6" W. PIPE = 60'

