

HENRY JUNIOR HIGH SCHOOL
43rd and Newton Avenues N.

1931

Mr. W. A. Porter, Principal

Originally Erected	1927
Number of Class Rooms	20
Number of Special Rooms	3
Enrollment	756

HENRY JUNIOR HIGH SCHOOL

A three and one story fireproof building with false wood roof over main portion and gypsum roof over auditorium.

DETAILED REPORT

OCCUPANCY: Boiler room, kitchen and lunch rooms, boy's gymnasium, transformer and generator room and janitor's room, basement. Office, manual training, sewing room, auditorium and class rooms, first. Class rooms and girl's gymnasium, second. Class rooms and domestic science, third.

CARE AND MAINTENANCE: Building in good repair, premises, neat.

COMMON HAZARDS: LIGHT -- Electric, wiring in rigid conduit. HEAT -- Steam from four low pressure boilers in separate room, non-standard cut off, safe. VENTILATION -- Metal ducts carried through roof.

SPECIAL HAZARDS: WOODWORKING --- Seven small woodworking machines in addition to benches. Refuse disposed of after every class.

PAINTING -- Small amount of brush work. All paints kept in good metal cabinet, approved metal can for paint rags. METALWORKING -- Hand work, seven gas furnaces. PRINTING -- Two small presses.

COOKING -- One gas range with hood and ventilator, for cafeteria.

DOMESTIC SCIENCE -- 32 gas plates. 10 small ranges and one oven.

EXPOSURES: None.

FIRST AID PROTECTION: Fair, five 3 inch standpipes with 50 to 100 feet of 1½ inch hose, and a deficient number of chemical fire extinguishers.

PUBLIC PROTECTION: Poor, ample water supply from two double and two triple hydrants conveniently located on 6 inch mains, only one pumper available within a radius of two miles, paved and unpaved streets intervening.

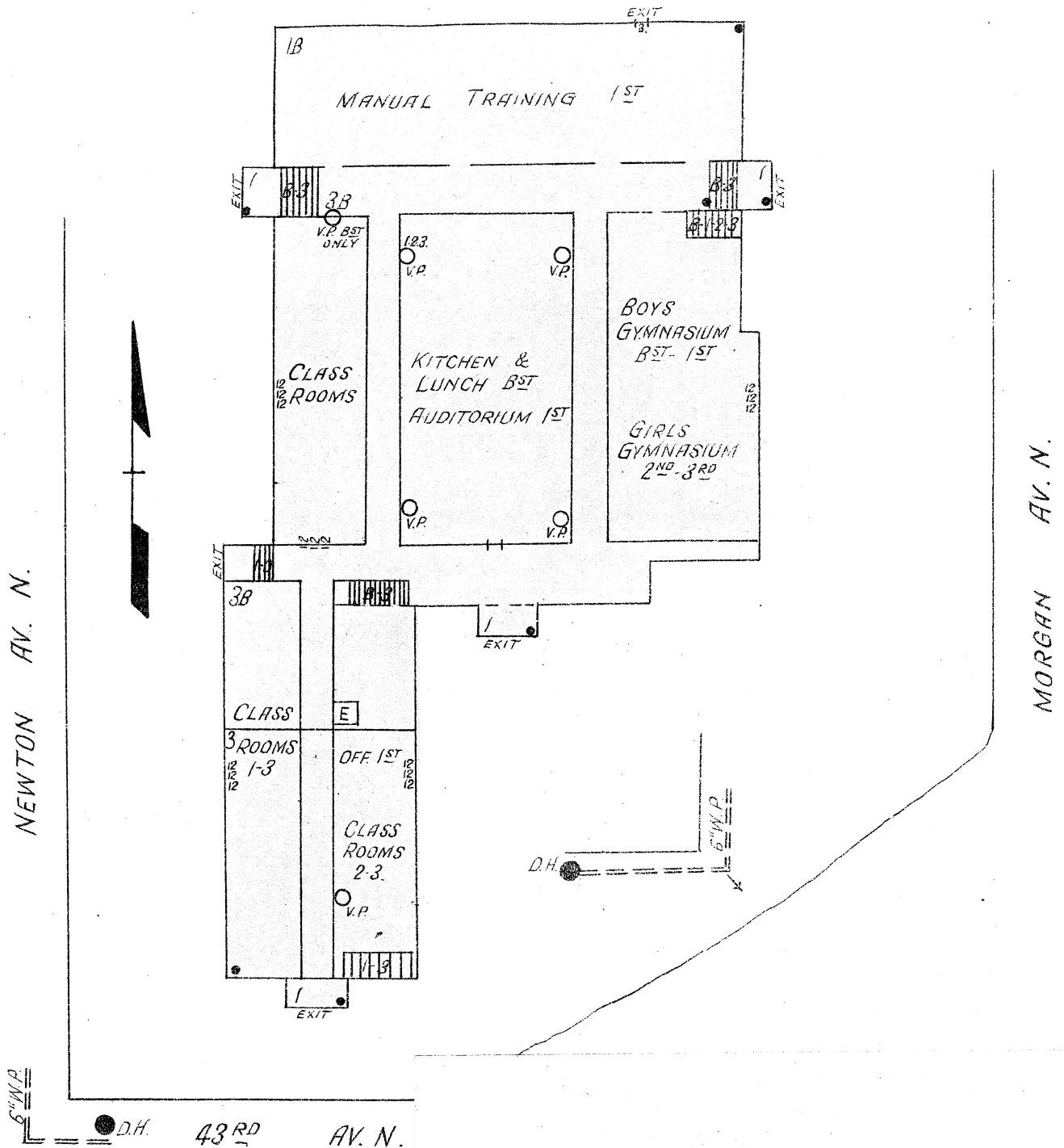
RECOMMENDATIONS

1. Install an additional standpipe and hose to reach all parts of manual training department.
2. Install a sufficient number of approved 2½ gallon chemical fire extinguishers.
3. Remodel transformer room to comply with standard requirements.
4. Provide an outside exit from boy's and girl's locker rooms, on first and third floors and from boiler room basement.
5. Remove lockers and tables from corridors.
6. Remove waste from paint cabinet and discontinue putting paper in paint rag can.

HENRY JUNIOR HIGH SCHOOL

MINNEAPOLIS, MINNESOTA

SCALE: 1 IN. = 50 FT.



- ERECTED** 1927.
- CONDITION** Good.
- HEIGHT** One and three stories.
- AREA** 28,500 Sq. Ft. Basement
33,450 Sq. Ft. first
20,500 Sq. Ft. second and third.
- FLOORS** Reinforced concrete.
- ROOF** Composition on $\frac{7}{8}$ " wood boards on wood supports resting on conc. slab Gypsum roof over auditorium.
- FLOOR OPENINGS** Four open stairways, basement to first.
Four open stairways, first to second
Five open stairways, second to third.

