

HAWTHORNE SCHOOL
424 24th Avenue N.

1931

Miss S. L. Saam, Principal

Originally Erected	1883
Number of Class Rooms	22
Number of Special Rooms	0
Enrollment	776

HAWTHORNE SCHOOL

A two story structure with wood floors and roof, deficient egress facilities.

DETAILED REPORT

OCCUPANCY: Boiler room, gymnasium, teachers lunch and book room, basement. Class rooms and painting room, first. Class rooms and office, second.

CARE AND MAINTENANCE: Building in fair repair, cleanliness, fair.

EGRESS FACILITIES: Poor. Blind pockets in northeast and southeast ends of building and a fire originating in or adjoining these sections would cut off all means of escape. Two kindergarten rooms in basement with only one door to hallway, all windows screened and bolted shut, a fire in the hallway near this exit would cut off only means of escape.

COMMON HAZARDS: LIGHT -- Electric, wiring in rigid conduit. HEAT -- Steam from high pressure boiler in separate non-fireproof room.

VENTILATION -- All metal ducts carried through roof.

SPECIAL HAZARDS: A sub-normal room where toys are made and sold, all hand work. PAINTING -- Brush work in a small separate room, good metal cabinet for paints and oils, some paints kept on table, self-closing can for paint rags.

EXPOSURES: Light from small dwellings and out buildings.

FIRST AID PROTECTION: None except a deficient number of chemical fire extinguishers.

PUBLIC PROTECTION: Good public protection, three double and one triple hydrants conveniently located on six inch water mains and two fire departments within one mile over paved and unpaved streets.

RECOMMENDATIONS

1. Install a fireproof floor over boiler room, and protect openings leading from this room with approved fire wall doors.
2. Install a sufficient number of approved 2½ gallon chemical fire extinguishers.
3. Remove paint room on first floor, as a fire originating in this room would cut off only exit from blind pocket which exists at this section of building. Until that time keep all paints and oils in cabinet for that purpose and remove all combustible material.
4. Provide a safe means of exit from blind pockets at northeast and southeast ends of building, and an additional exit from kindergarten class rooms in basement where a bad condition exists, as windows are screened and bolted shut from the inside.

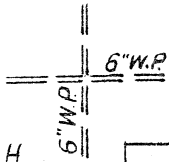
Recommendations Nos. 3 and 4 should receive immediate attention.

D.H.

HAWTHORN SCHOOL

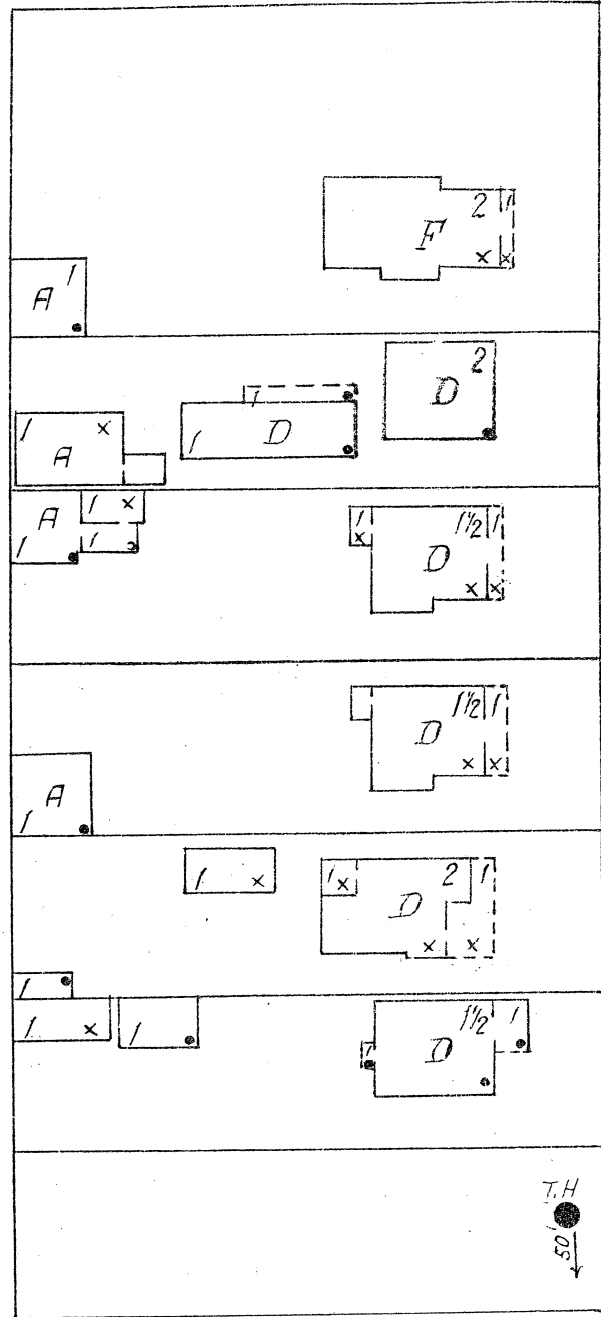
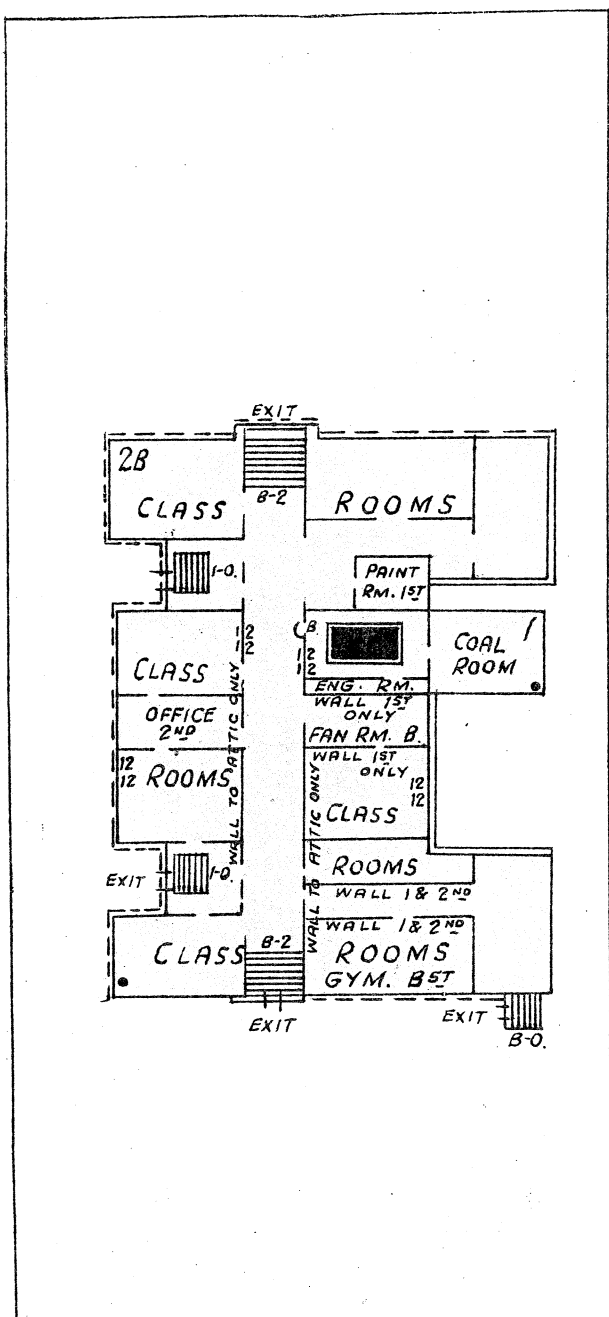
MINNEAPOLIS, MINNESOTA

SCALE: 1 IN. = 50 FT.

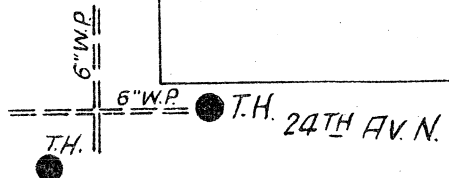


D.H.

N. 6TH ST.



N. 6TH ST.



- ERECTED: 1883, 1903, 1912.
- CONDITION: Fair.
- HEIGHT: Two stories.
- AREA: Basement, first and second, 13,000 Sq. Ft.
- WALLS: 12" brick.
- FLOORS: Ordinary wood joist.
- ROOF: Slate roofing on wood boards on wood joists.
- FLOOR OPENINGS: Two open stairways, basement to second.

