

HALE SCHOOL

E. 54th Street and 12th Avenue S.

1931

Miss Esther Sherwood, Principal

Originally Erected	1930
Number of Class Rooms	14
Number of Special Rooms	0
Enrollment	359

HALE SCHOOL

This is the last building erected, is well built and of good fireproof construction.

DETAILED REPORT

OCCUPANCY: No special features.

CARE AND MAINTENANCE: Excellent.

EGRESS FACILITIES: Good, three stairways from second to first floors, open, but are so located that all of them would not be entirely blocked by one smoke hazard. Exit lights provided. All outer doors have panic bars.

COMMON HAZARDS: LIGHT -- Electric lights with wiring in metal conduit. HEAT -- Hot water boilers in fireproof addition communicating through two openings one of which is protected by approved two ply fire door and the other by unapproved metal clad door. Oil fuel, tank buried outside, anti-siphoning device installed.

VENTILATION -- Metal ventilating flues are carried through roof.

SPECIAL HAZARDS: COOKING -- Gas range for teachers lunches and gas plate for community kitchen, safe. Three small oil cooled transformers in semi-standard fireproof vault in basement.

FIRST AID PROTECTION: Inadequate supply of fire extinguishers, there being two on the first and two on the second floors. Electric alarm.

PUBLIC PROTECTION: Adequate fire hydrants nearby; two stations within two miles over part paved streets; fire alarm box three blocks away.

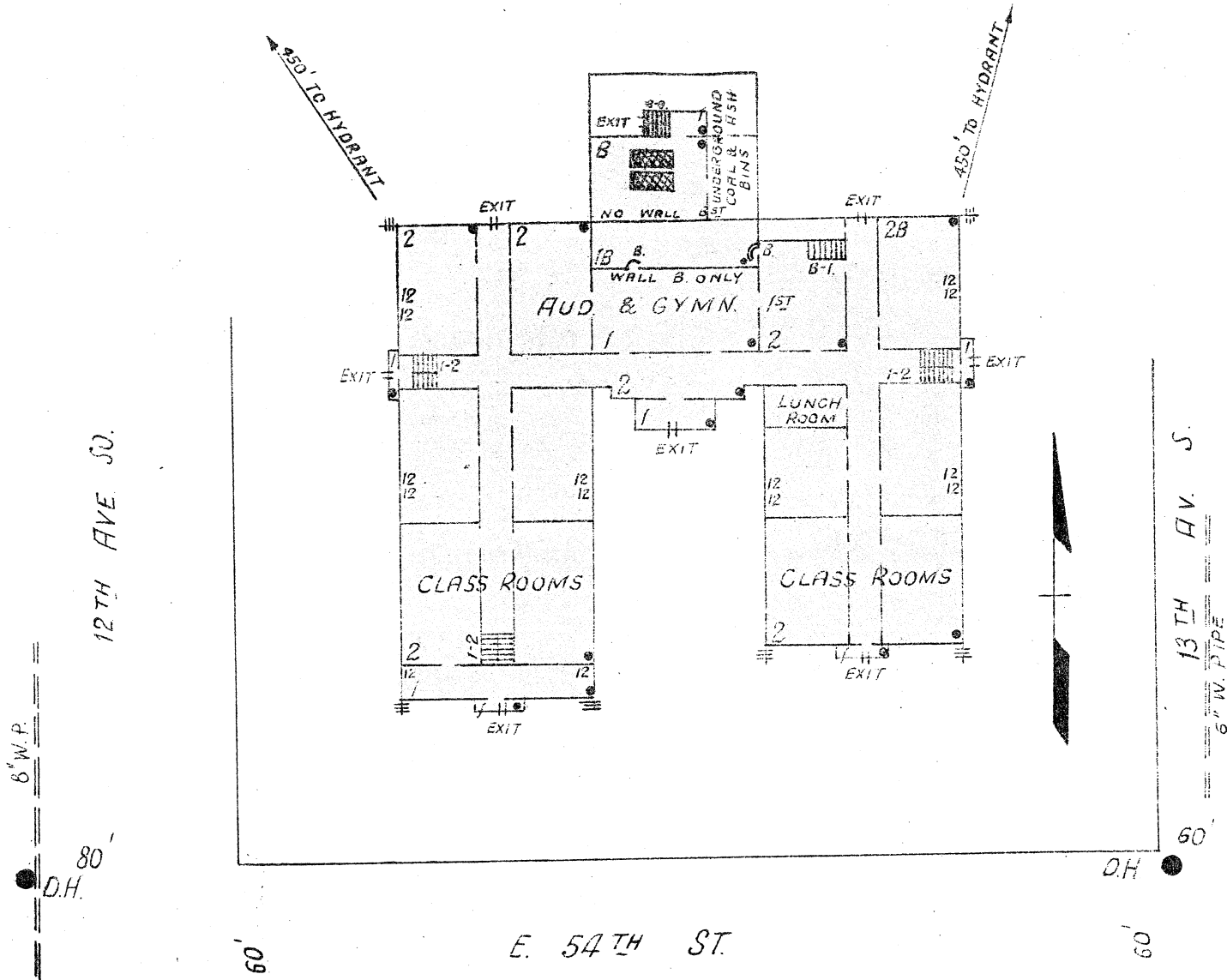
RECOMMENDATIONS

1. Install sufficient chemical fire extinguishers.
2. Install approved three ply fire doors on openings into boiler room.
3. Make transformer vault standard.

HALE SCHOOL

MINNEAPOLIS, MINNESOTA

SCALE: 1 IN.=50 FT.



ERECTED
CONDITION
HEIGHT
AREA

WALLS
FLOORS
ROOF

FLOOR
OPENINGS

1930.
Excellent.
One and two stories.
Basement, 4,780 Sq. Ft.; first, 18,550 Sq. Ft.; 2nd, 15,450 Sq. Ft.
Panel, 8" H. T. faced with 4" brick.
Reinforced concrete and tile
Wood roof over reinforced concrete ceiling.
Three open stairways, first to second.
One enclosed stairway, basement to first wood door.

