

EDISON HIGH SCHOOL

22nd Avenue and Monroe Street N. E.

1931

Mr. Louis G. Cook, Principal

Originally Erected	1925
Number of Class Rooms	70
Number of Special Rooms	10
Enrollment	2500

## EDISON HIGH SCHOOL

A three story modern fireproof structure with a false wood roof over major portion. A one story attached and communicating annex has an ordinary wood joisted roof. An overcrowded condition exists which should be relieved by the construction of additional school facilities.

### DETAILED REPORT

OCCUPANCY: Basement; boilers, fan equipment, stage equipment, storage, kitchen, lunch room and gymnasiums. First floor; domestic science, stage, auditorium and class rooms in main section; machine shop, auto repairs, printing, tin shop, electric shop and woodworking shops in annex. Second floor; class rooms. Third floor; sewing departments and class rooms.

CARE AND MAINTENANCE: Building in excellent repair. Housekeeping is good.

EGRESS FACILITIES: Poor due to overcrowded condition. For present enrollment stairways are 44% deficient between first and second floors with a deficiency of 35% in doorway width.

COMMON HAZARDS: LIGHT -- Electric with standard rigid conduit installation. HEAT -- Steam boilers located in fireproof boiler room with non-standard doors on communicating openings. VENTILATION -- Metal ventilating flues exhaust into roof space.

SPECIAL HAZARDS: Gas heated devices in various departments and kitchen properly arranged and well safeguarded. Metal forge in machine shop, safe. Woodworking with refuse exhausting into fireproof vault from blower system, safe arrangement. Painting with metal storage cabinet for paints and standard waste cans for oily rags. Stage with lifting and movable scenery protected by standard automatic sprinkler installation. Electric irons and glue pots equipped with pilot lights except glue pot in finishing room. Motion picture machine in standard booth. Small printing department with small electric plate for embossing, slight hazard.

EXPOSURES: None.

FIRST AID PROTECTION: Inadequate, four 2½ gallon extinguishers on each floor, three five gallon pump and four one quart extinguishers on first and one one quart extinguisher in motion picture booth, all approved type. Adequate standpipe and hose protection in main building, four connections on each floor with 100 feet of 1½ inch hose at each, none in annex. Stage section protected by standard automatic sprinklers.

PUBLIC PROTECTION: Full city protection; four well supplied double hydrants available; four blocks to fire station over paved and graded streets; one block to fire alarm box.

### RECOMMENDATIONS

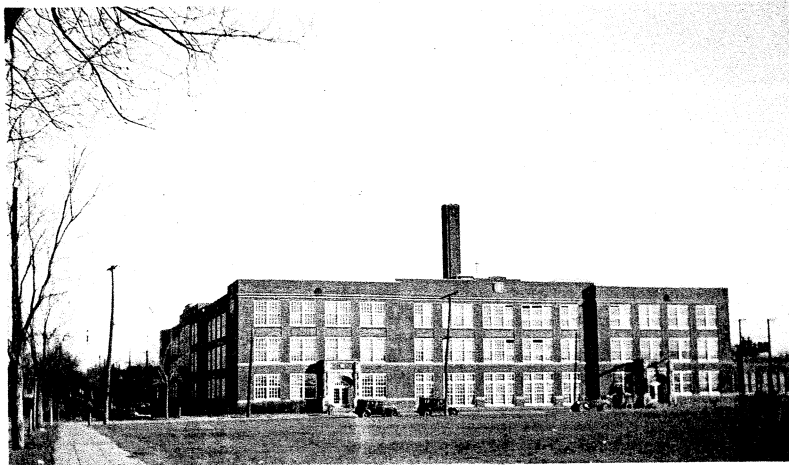
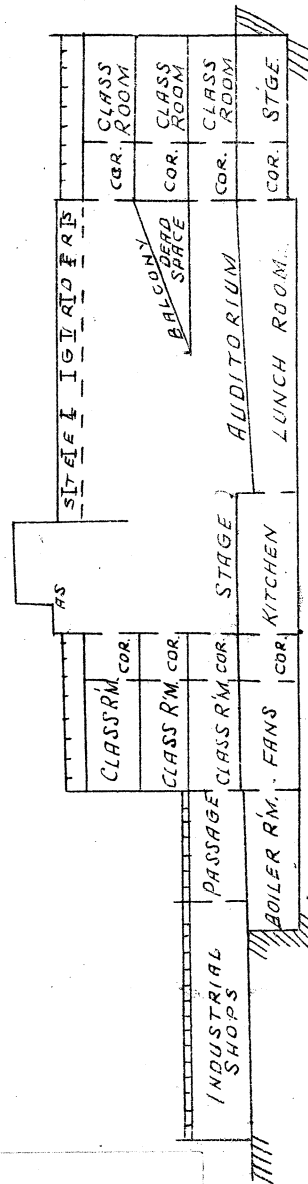
1. Provide standard installation of fire extinguishers.
2. Provide standard standpipe and hose protection.
3. All ventilating ducts now exhausting in roos space should exhaust through roof in continuous metal flues.
4. Under present overcrowded conditions two additional stairways should be provided between first and second floors or enrollment be reduced to that for which the building was originally constructed.
5. Widen all exits to full width of corridor and provide additional exits at each end of service building.

# EDISON HIGH SCHOOL

MINNEAPOLIS, MINNESOTA

SCALE: 1 IN.=50 FT.

**ERECTED:** 1925.  
**CONDITION:** Good.  
**HEIGHT:** One and three stories.  
**AREA:** Bsmt. 55,800 sq. ft., 1st 65,350 sq. ft.,  
 2nd 46,000 sq. ft., 3rd 42,000 sq. ft.  
**WALLS:** 12" brick panel.  
**FLOORS:** Reinf. conc. joist and slab, some hollow tile filled.  
**ROOF:** Reinf. conc. joist and slab over basement sections, reinf. conc. on unprotected steel over auditorium with metal lath and plaster ceiling under, remainder of building has ordinary wood joisted roof with reinf. conc. joist and slab ceiling under in main section only.  
**FLOOR OPENINGS:** Four open stairways from basement to 3rd floor and one enclosed elevator from bsmt. to 3rd floor.



SECTION A-A.

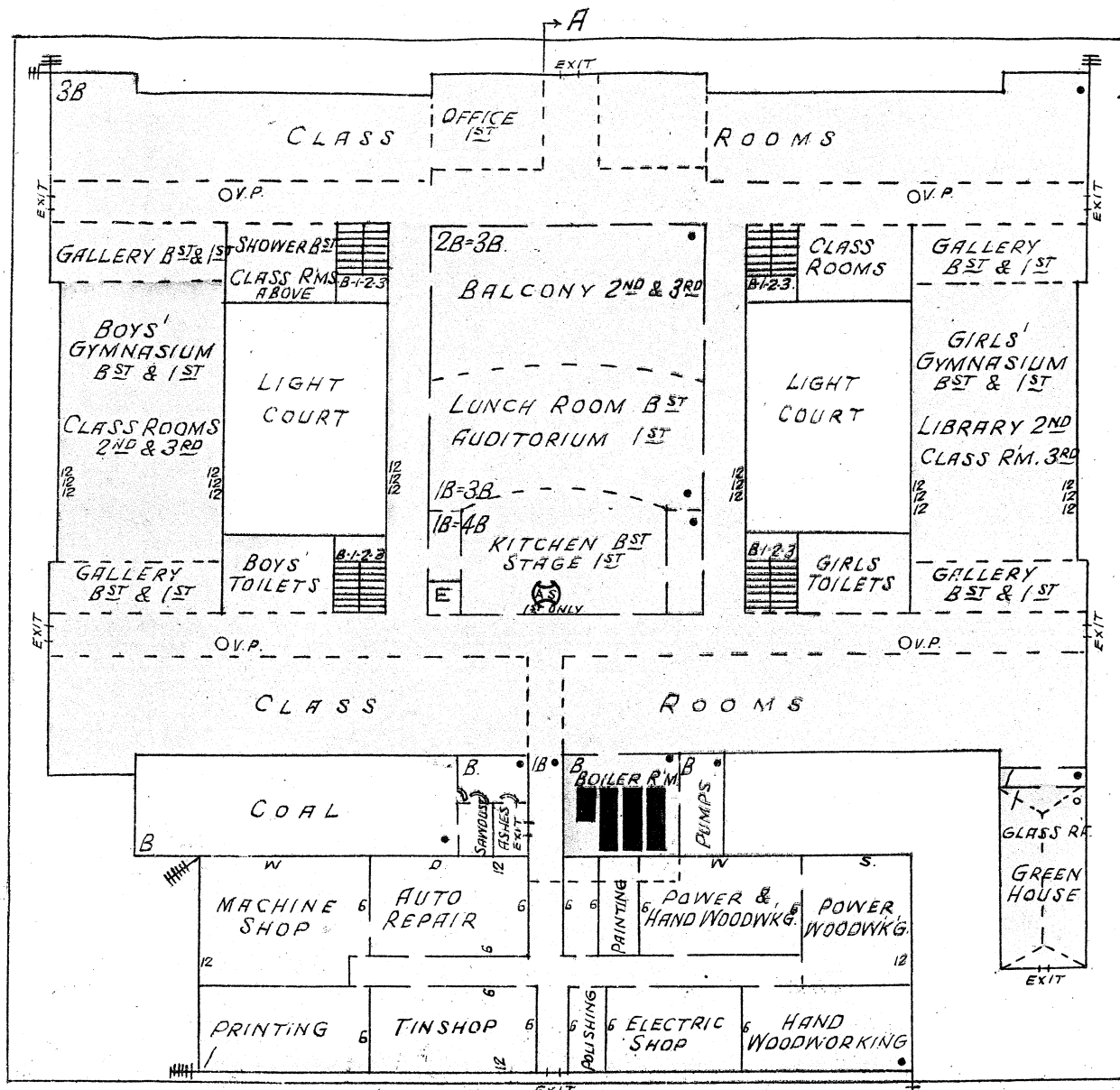
8" W. PIPE

6" W. PIPE

22ND AV. N. E.

MONROE ST. N. E.

QUINCY ST. N. E.



D.H.

80'

8" W. PIPE

6" W. PIPE

20TH AV. N. E.

1 BLOCK TO (FA)

6" W. PIPE

D.H.

80'